



PLANTA BAJA

3 DORMITORIOS - 3,5 BAÑOS

| | |
|-----------------------------|--------------------------------|
| SUP. PLANTA ALTA | 122.64 m ² |
| SUP. PLANTA BAJA | 128.64 m ² |
| SUP. PLANTA SÓTANO | 154.98 m ² |
| TOTAL SUP. VIVIENDA: | 406.26 m² |
| SUP. TERRAZA | 67.00 - 124.00 m ² |
| SUP. PISCINA + JARDÍN | 72.00 - 335.00 m ² |
| SUP. PARCELA | 267.56 - 558.13 m ² |

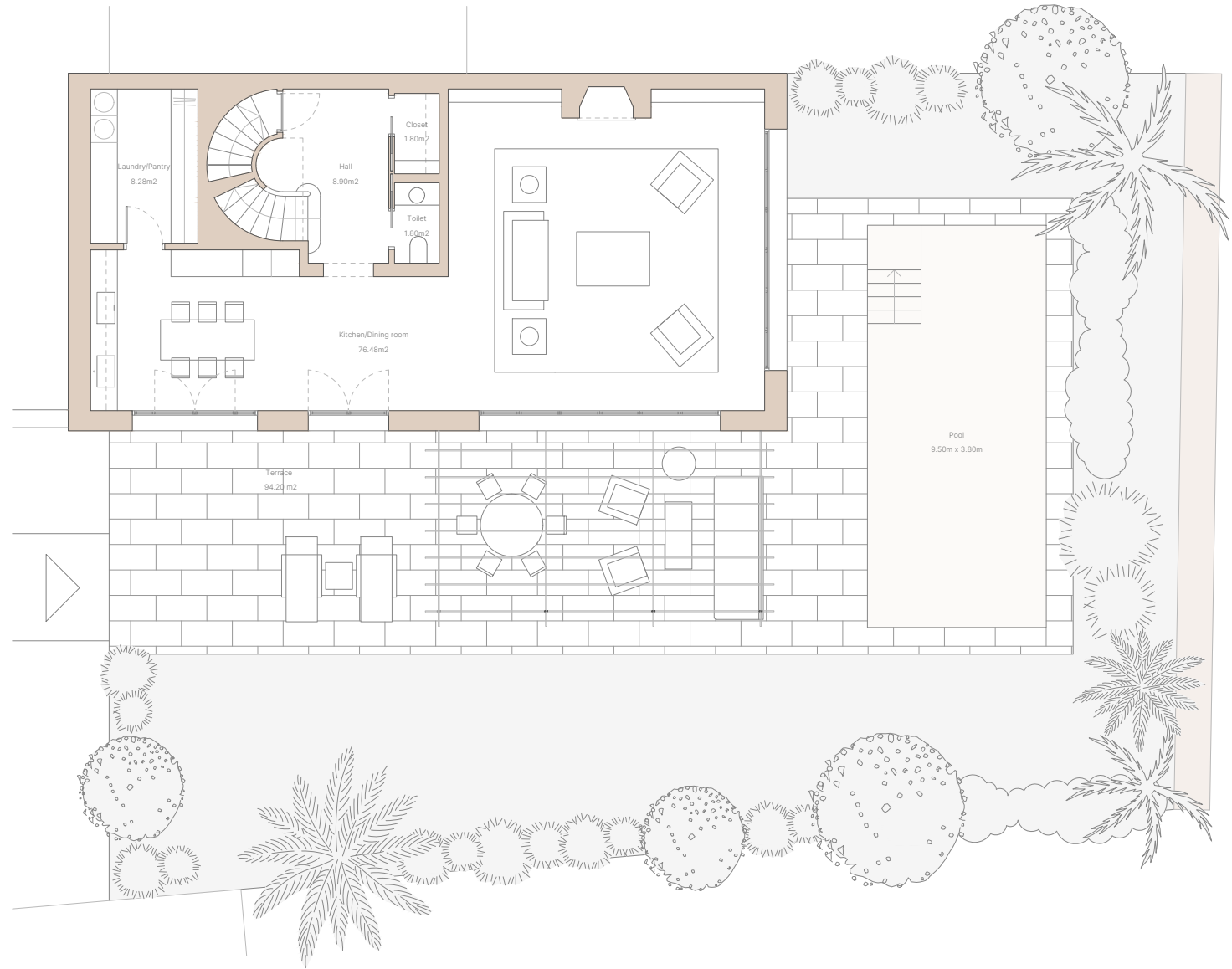
2 PLAZAS DE APARCAMIENTO Y TRASTERO

GROUND FLOOR

3 BEDROOMS - 3,5 BATHROOMS

| | |
|----------------------|--------------------------------|
| FIRST FLOOR AREA: | 122.64 m ² |
| GROUND FLOOR AREA: | 128.64 m ² |
| BASEMENT FLOOR AREA: | 154.98 m ² |
| TOTAL AREA: | 406.26 m² |
| TERRACE | 67.00 - 124.00 m ² |
| POOL + GARDEN AREA: | 72.00 - 335.00 m ² |
| PLOT AREA: | 267.56 - 558.13 m ² |

2 PARKING SPACES AND STORAGE ROOM





PLANTA ALTA Y SÓTANO

3 DORMITORIOS - 3,5 BAÑOS

| | |
|-----------------------------|--------------------------------|
| SUP. PLANTA ALTA | 122.64 m ² |
| SUP. PLANTA BAJA | 128.64 m ² |
| SUP. PLANTA SÓTANO | 154.98 m ² |
| TOTAL SUP. VIVIENDA: | 406.26 m² |
| SUP. TERRAZA | 67.00 - 124.00 m ² |
| SUP. PISCINA + JARDÍN | 72.00 - 335.00 m ² |
| SUP. PARCELA | 267.56 - 558.13 m ² |

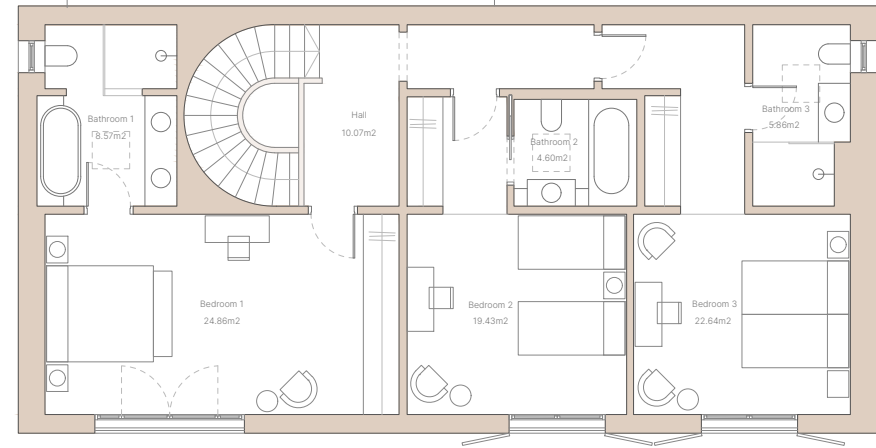
2 PLAZAS DE APARCAMIENTO Y TRASTERO

FIRST FLOOR AND BASEMENT

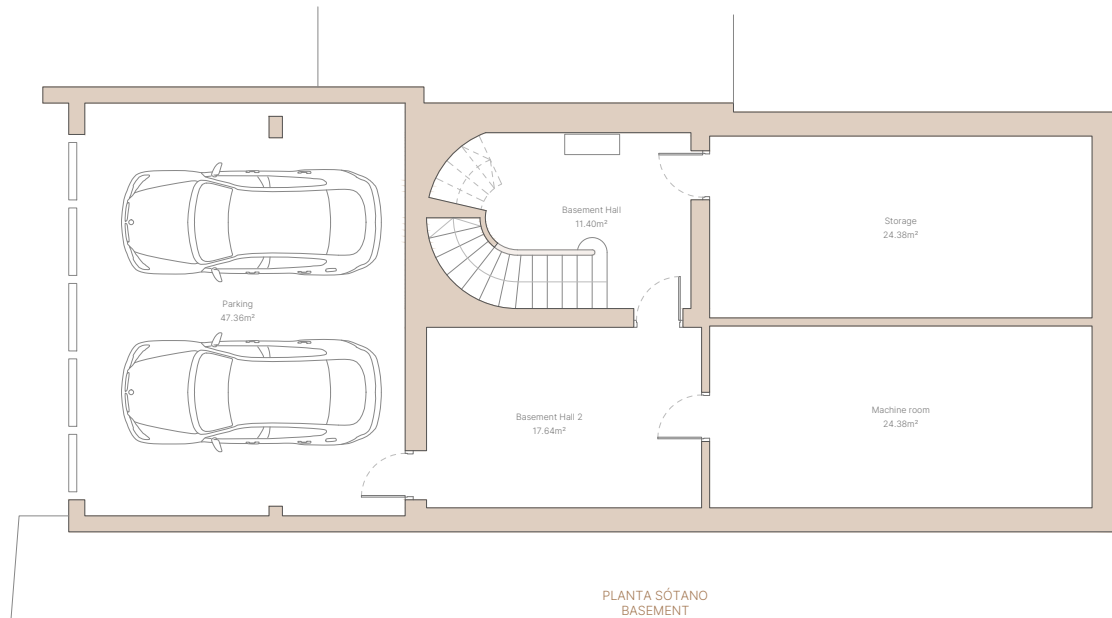
3 BEDROOMS - 3,5 BATHROOMS

| | |
|----------------------|--------------------------------|
| FIRST FLOOR AREA: | 122.64 m ² |
| GROUND FLOOR AREA: | 128.64 m ² |
| BASEMENT FLOOR AREA: | 154.98 m ² |
| TOTAL AREA: | 406.26 m² |
| TERRACE | 67.00 - 124.00 m ² |
| POOL + GARDEN AREA: | 72.00 - 335.00 m ² |
| PLOT AREA: | 267.56 - 558.13 m ² |

2 PARKING SPACES AND STORAGE ROOM



PLANTA ALTA
FIRST FLOOR



PLANTA SÓTANO
BASEMENT