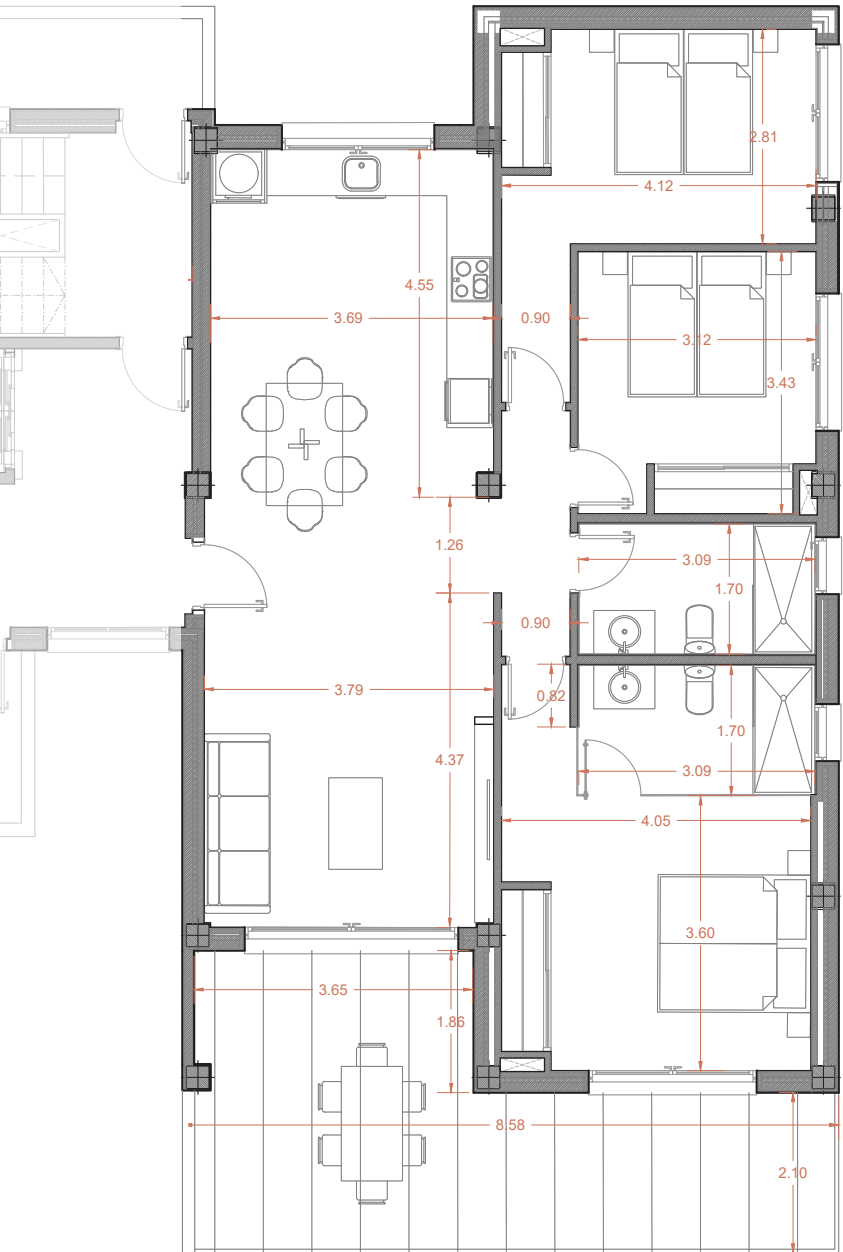


# HOUSE N.46 (TYPE A') 2ND FLOOR - BLOCK 2



THE IMAGES REFER TO APPROXIMATE SOLUTIONS AND ARE NOT BINDING WITH THE FINAL PROJECT

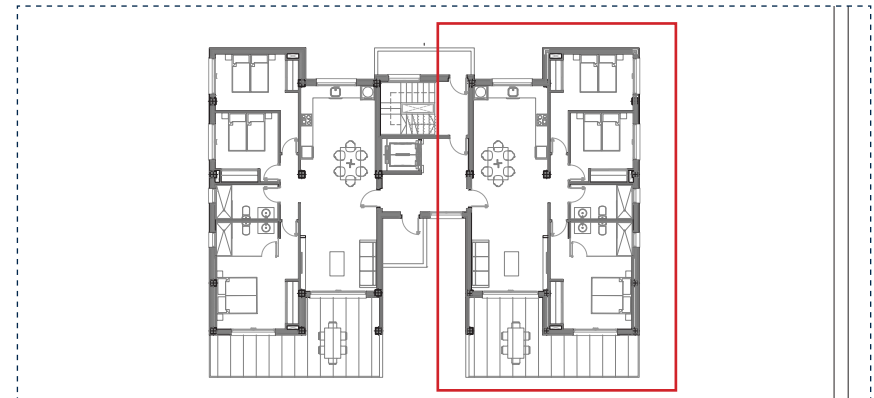
## 2ND FLOOR TYPE A'



## BUILT SURFACE

129 M2

LIVING ROOM KITCHEN	38,00 M2
BEDROOM 1	16,00 M2
BEDROOM 2	13,30 M2
BEDROOM 3	10,35 M2
BATHROOM 1	5,20 M2
BATHROOM 2	5,25 M2
CORRIDOR	3,00 M2
COVERED TERRACE 50%%	12,00 M2
<b>TOTAL USABLE SURFACE</b>	<b>103,10 M2</b>



## 1 X BASEMENT PARKING

