

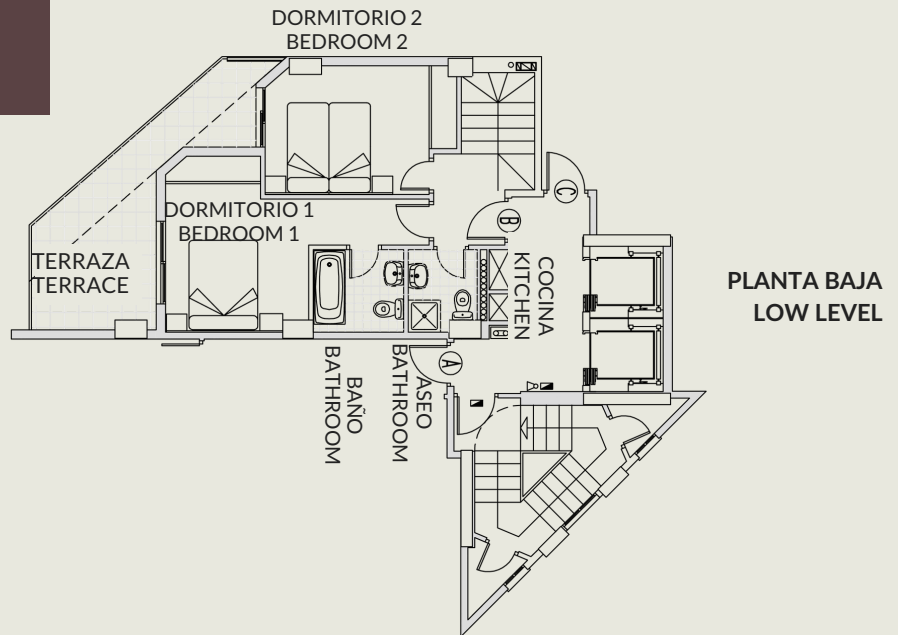
# ÁTICO 310B PENTHOUSE 310B

## ÁTICO DÚPLEX / DUPLEX PENTHOUSE

3 DORMITORIOS / 3 BEDROOMS

PLANTA 10ª / 10th FLOOR

ESCALERA 3 / STAIR 3

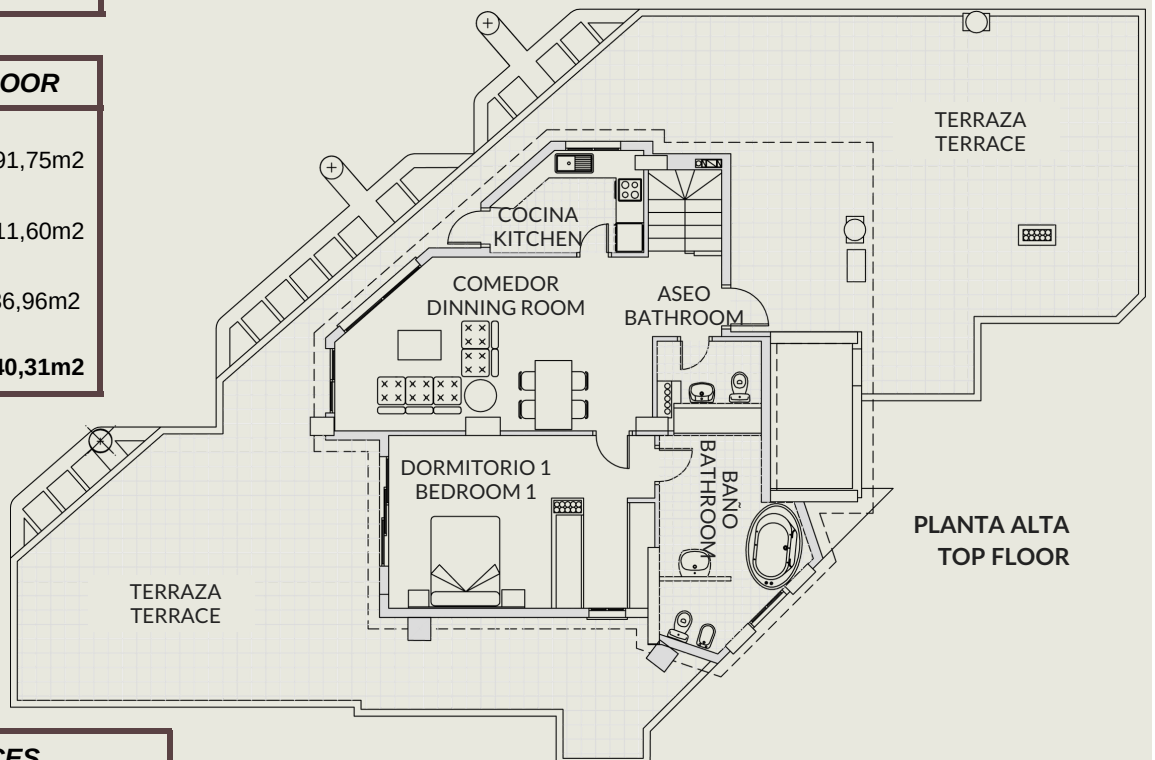


### PLANTA BAJA / LOW LEVEL

Superficie construida <i>Builted surface</i>	42,69m <sup>2</sup>
Terraza cubierta <i>Covered terrace</i>	7,36m <sup>2</sup>
Terraza descubierta <i>Outdoor terrace</i>	6,06m <sup>2</sup>
Elementos comunes <i>Communal areas</i>	26,80m <sup>2</sup>
<b>TOTAL APARTAMENTO APARTAMENT TOTAL</b>	<b>82,91m<sup>2</sup></b>

### PLANTA ALTA / TOP FLOOR

Superficie construida <i>Builted surface</i>	91,75m <sup>2</sup>
Terraza cubierta <i>Covered terrace</i>	11,60m <sup>2</sup>
Terraza descubierta <i>Outdoor terrace</i>	136,96m <sup>2</sup>
<b>TOTAL APARTAMENTO APARTAMENT TOTAL</b>	<b>240,31m<sup>2</sup></b>



### SUPERFICIES / SURFACES

Superficie construida <i>Builted surface</i>	134,44m <sup>2</sup>
Terraza cubierta <i>Covered terrace</i>	18,96m <sup>2</sup>
Terraza descubierta <i>Outdoor terrace</i>	143,02m <sup>2</sup>
Elementos comunes <i>Communal areas</i>	26,80m <sup>2</sup>
<b>TOTAL APARTAMENTO APARTAMENT TOTAL</b>	<b>323,22m<sup>2</sup></b>

