

An aerial photograph of a coastal city at sunset. The sky is a mix of blue and orange, with wispy clouds. In the background, there are mountains and a body of water. The city below is densely packed with buildings and greenery. The text "18 INDIVIDUALLY DESIGNED SUSTAINABLE VILLAS" is overlaid in white, bold, sans-serif font.

18 INDIVIDUALLY DESIGNED SUSTAINABLE VILLAS

VILLA
Nº1

VILLA Nº1

Villa Nº1 sits on a large corner south-east facing plot with fabulous views over Marbella. The carefully thought-out orientation of the villa ensures uninterrupted sea views and complete privacy. The villa has a large pool and generous terraces, making the most of the gorgeous Marbella climate. In key parts of the villa the windows disappear into the walls, framing the undisturbed, panoramic views of the idyllic natural surroundings. The master bedroom suite is designed along the lines of a 5-star hotel suite and has a large walk-in wardrobe and its own private terrace. The carport has space for two cars and the large garden can accommodate an organic vegetable plot, if so desired.





VILLA N°1

GROUND FLOOR	143,18 m ²
FIRST FLOOR	112,81 m ²
BASEMENT	295,89 m ²
TOTAL	551,88 m²

PORCHES	3,29 m ²
TERRACES	45,64 m ²
PERGOLAS	82,64 m ²
CARPORT	39,33 m ²
COMMUNAL AREAS	8,70 m ²
TOTAL CONSTRUCTED	731,48 m²

PLOT	2.347,00 m²
GARDEN	347,84 m ²
SWIMMING POOL	56,54 m ²
TOTAL USEFUL AREA	530,08 m²
DECREE 218/2005	

These images are not contractual but only for illustrative purposes. The images are subject to technical, legal or commercial modifications approved by the project management or the competent authority. The 3D images corresponding to the facades, common elements, and the rest of the spaces are merely indicative and will be subject to verification or Modification in the technical projects. The furniture of the 3D images is not included and the equipment of the villas will be indicated in the corresponding building and quality specifications. The energy certification corresponds with the one established in the project in process. All the information and documentation will be provided according to the terms established in the Royal Decree 515/1989 and in the rest of the autonomous or state regulations currently in force that could complement the Mentioned Decree.



VILLA N°1

GROUND FLOOR

LIVING AREA

ENTRANCE	16,55 m ²
STAIRS	6,50 m ²
LOUNGE- DINING-KITCHEN	83,42 m ²
BATHROOM 3	5,65 m ²
BEDROOM 3	12,58 m ²
TOTAL	124,70 m²

ACCESS & TERRACES

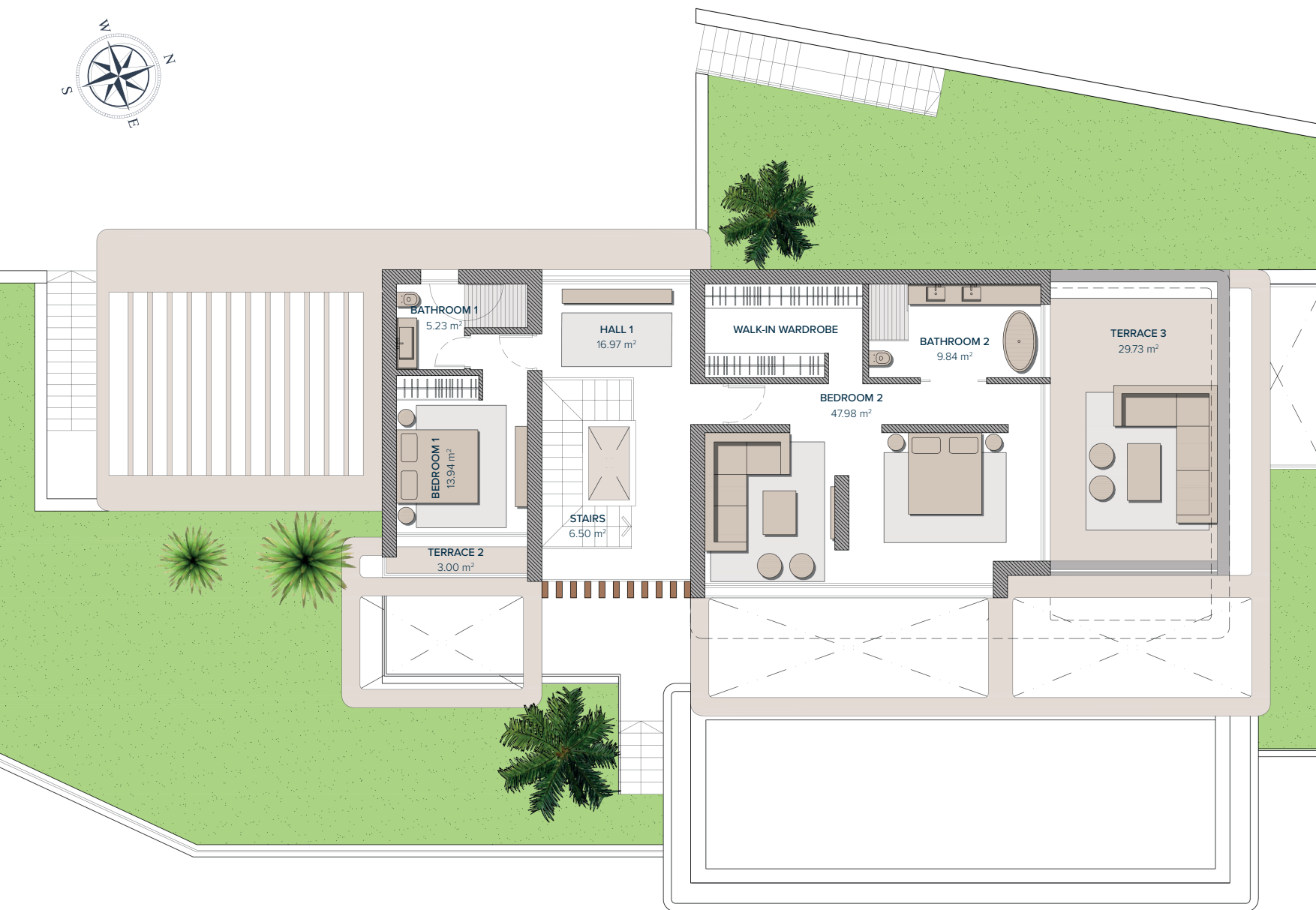
PORCH ACCESS	3,29 m ²
PARKING (PERGOLA)	39,01 m ²
TERRACE 1	8,52 m ²
PERGOLA 1	52,29 m ²
PERGOLA 2	11,51 m ²
TOTAL	114,62 m²

0 1 2 3 4 5
GRAPHIC SCALE 1:100

Entrance

1
0
-1

These images are not contractual but only for illustrative purposes. The images are subject to technical, legal or commercial modifications approved by the project management or the competent authority. The 3D images corresponding to the facades, common elements, and the rest of the spaces are merely indicative and will be subject to verification or Modification in the technical projects. The furniture of the 3D images is not included and the equipment of the villas will be indicated in the corresponding building and quality specifications. The energy certification corresponds with the one established in the project in process. All the information and documentation will be provided according to the terms established in the Royal Decree 515/1989 and in the rest of the autonomous or state regulations currently in force that could complement the Mentioned Decree.



VILLA N°1

FIRST FLOOR

BEDROOMS

HALL 1	16,97 m ²
STAIRS	6,50 m ²
BATHROOM 1	5,23 m ²
BEDROOM 1	13,94 m ²
BEDROOM 2	47,98 m ²
BATHROOM 2	9,84 m ²
TOTAL	100,46 m²

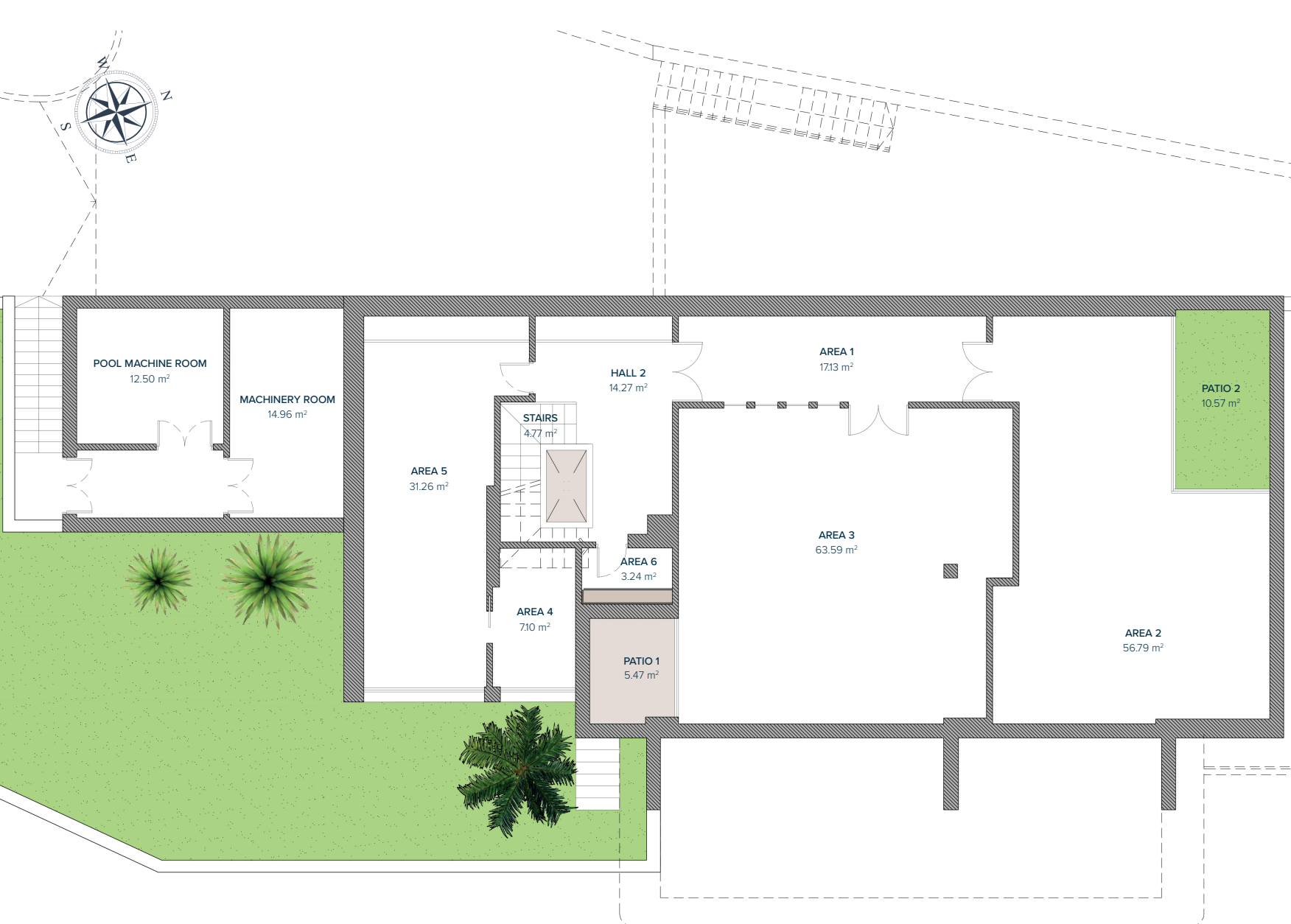
TERRACES

TERRACE 2	3,00 m ²
TERRACE 3	29,73 m ²
TOTAL	32,73 m²



Entrance	1
	0
	-1

These images are not contractual but only for illustrative purposes. The images are subject to technical, legal or commercial modifications approved by the project management or the competent authority. The 3D images corresponding to the facades, common elements, and the rest of the spaces are merely indicative and will be subject to verification or Modification in the technical projects. The furniture of the 3D images is not included and the equipment of the villas will be indicated in the corresponding building and quality specifications. The energy certification corresponds with the one established in the project in process. All the information and documentation will be provided according to the terms established in the Royal Decree 515/1989 and in the rest of the autonomous or state regulations currently in force that could complement the Mentioned Decree.



VILLA Nº1

BASEMENT

HALL 2	14,27 m ²
AREA 1	17,13 m ²
AREA 2	56,79 m ²
AREA 3	63,59 m ²
AREA 4	7,10 m ²
AREA 5	31,26 m ²
AREA 6	3,24 m ²
POOL MACHINE ROOM	12,50 m ²
MACHINERY ROOM	14,96 m ²
STAIRS	4,77 m ²
PATIO	1,80 m ²
PATIO 1	5,47 m ²
PATIO 2	10,57 m ²
TOTAL	243,45 m²

0 1 2 3 4 5
GRAPHIC SCALE 1:100

Entrance	1
	0
	-1

These images are not contractual but only for illustrative purposes. The images are subject to technical, legal or commercial modifications approved by the project management or the competent authority. The 3D images corresponding to the facades, common elements, and the rest of the spaces are merely indicative and will be subject to verification or Modification in the technical projects. The furniture of the 3D images is not included and the equipment of the villas will be indicated in the corresponding building and quality specifications. The energy certification corresponds with the one established in the project in process. All the information and documentation will be provided according to the terms established in the Royal Decree 515/1989 and in the rest of the autonomous or state regulations currently in force that could complement the Mentioned Decree.

VILLA Nº1

