

An aerial photograph of a coastal city at sunset. The sky is a mix of blue and orange, with wispy clouds. In the background, a range of mountains is visible across a body of water. The city below is densely packed with buildings and greenery, with the sun's glow illuminating the scene from the right.

18 INDIVIDUALLY DESIGNED SUSTAINABLE VILLAS

VILLA
Nº7

VILLA Nº7

Villa Nº7 sits on a south-facing plot with amazing views across the Mediterranean to Gibraltar. The carefully thought-out orientation of the villa ensures uninterrupted sea views and complete privacy. The villa has generous terraces, making the most of the fabulous Marbella climate, and an ample garden with enough room for an organic vegetable plot if so desired. In key parts of the villa the windows disappear into the walls, framing the undisturbed, panoramic views of the idyllic natural surroundings. There are four spacious ensuite bedrooms, with the Master Suite and two guest bedrooms enjoying their own private terraces. Built over four floors with a basement of nearly 200 metres squared, this is a perfect family home.





VILLA N°7

SECOND FLOOR	20,94 m ²
FIRST FLOOR	144,29 m ²
GROUND FLOOR	111,36 m ²
BASEMENT	258,00 m ²

TOTAL 534,59 m²

TERRACES	39,16 m ²
PERGOLAS	48,69 m ²
CARPORT	41,44 m ²
COMMON AREA	8,70 m ²

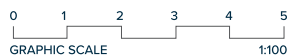
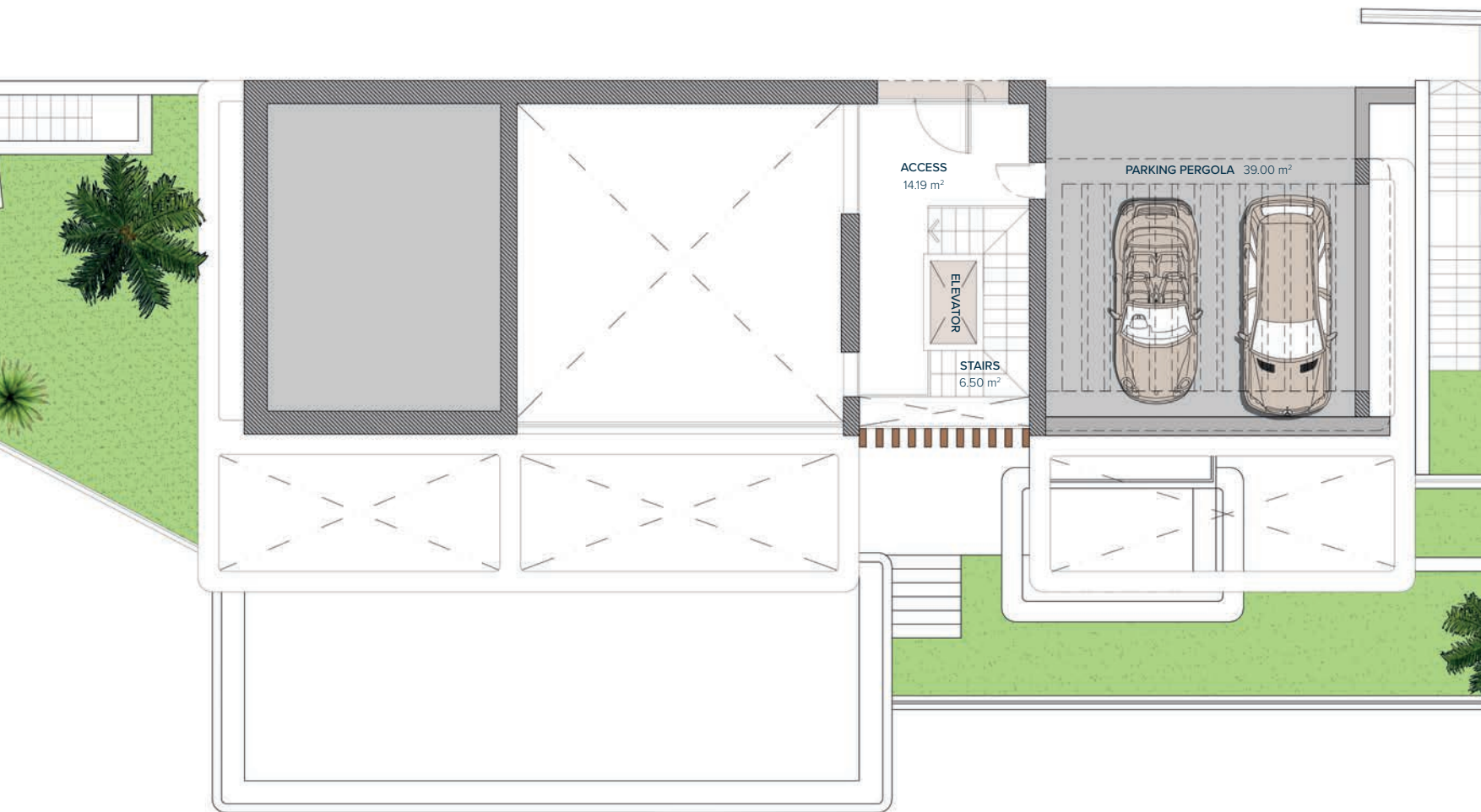
TOTAL 672,58 m²

PLOT 1.337,00 m²

GARDEN	155,25 m ²
SWIMMING POOL	56,43 m ²

TOTAL USEFUL AREA 495,94 m²
DECREE 218/2005

These images are not contractual but only for illustrative purposes. The images are subject to technical, legal or commercial modifications approved by the project management or the competent authority. The 3D images corresponding to the facades, common elements, and the rest of the spaces are merely indicative and will be subject to verification or Modification in the technical projects. The furniture of the 3D images is not included and the equipment of the villas will be indicated in the corresponding building and quality specifications. The energy certification corresponds with the one established in the project in process. All the information and documentation will be provided according to the terms established in the Royal Decree 515/1989 and in the rest of the autonomous or state regulations currently in force that could complement the Mentioned Decree.



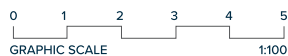
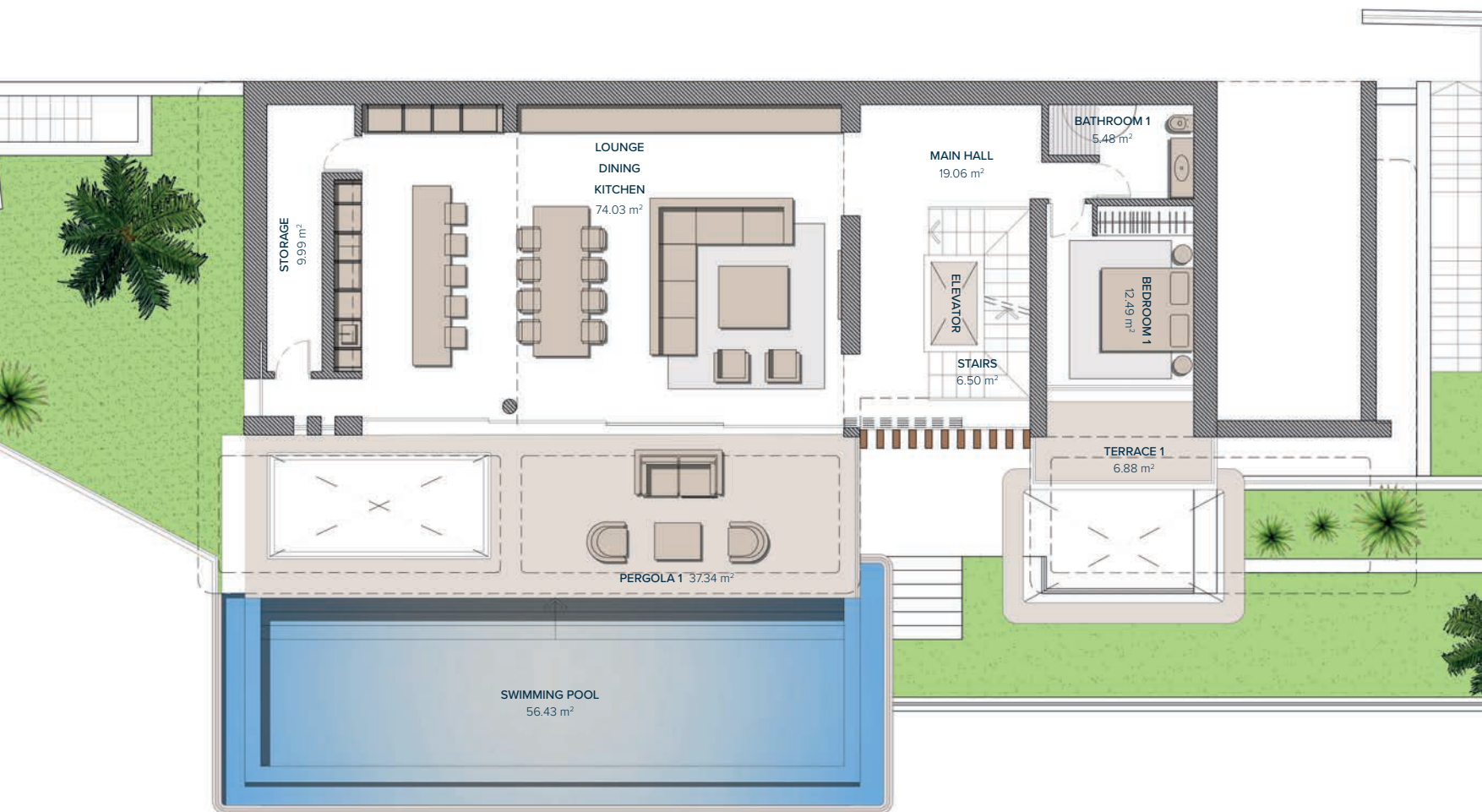
Entrance	2
	1
	0
	-1

VILLA N°7

SECOND FLOOR ENTRANCE

ACCESS	14,19 m ²
STAIRS	6,50 m ²
TOTAL	20,69 m²
PARKING (PERGOLA)	39,00 m ²
TOTAL	39,00 m²

These images are not contractual but only for illustrative purposes. The images are subject to technical, legal or commercial modifications approved by the project management or the competent authority. The 3D images corresponding to the facades, common elements, and the rest of the spaces are merely indicative and will be subject to verification or Modification in the technical projects. The furniture of the 3D images is not included and the equipment of the villas will be indicated in the corresponding building and quality specifications. The energy certification corresponds with the one established in the project in process. All the information and documentation will be provided according to the terms established in the Royal Decree 515/1989 and in the rest of the autonomous or state regulations currently in force that could complement the Mentioned Decree.



Entrance	2
	1
	0
	-1

VILLA N°7

FIRST FLOOR

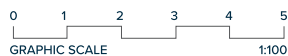
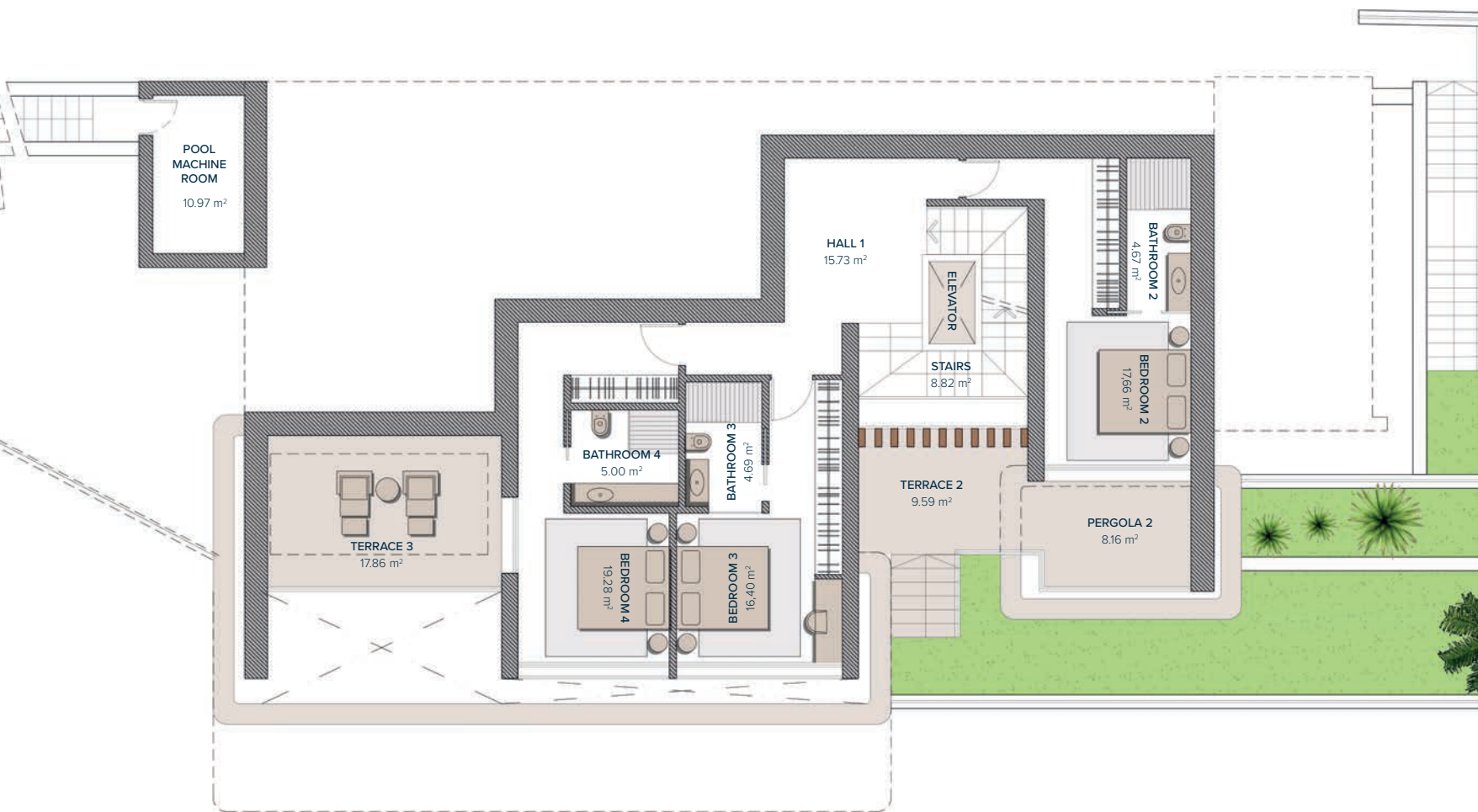
LIVING AREA

MAIN HALL	19,06 m ²
STAIRS	6,50 m ²
LOUNGE-DINING-KITCHEN	74,03 m ²
BATHROOM 1	5,48 m ²
BEDROOM 1	12,49 m ²
STORAGE	9,99 m ²
TOTAL	127,55 m²

PERGOLAS & TERRACES

TERRACE 1	6,88 m ²
PERGOLA 1	37,34 m ²
TOTAL	44,22 m²

These images are not contractual but only for illustrative purposes. The images are subject to technical, legal or commercial modifications approved by the project management or the competent authority. The 3D images corresponding to the facades, common elements, and the rest of the spaces are merely indicative and will be subject to verification or Modification in the technical projects. The furniture of the 3D images is not included and the equipment of the villas will be indicated in the corresponding building and quality specifications. The energy certification corresponds with the one established in the project in process. All the information and documentation will be provided according to the terms established in the Royal Decree 515/1989 and in the rest of the autonomous or state regulations currently in force that could complement the Mentioned Decree.



Entrance	2
	1
	0
	-1

VILLA N°7

GROUND FLOOR

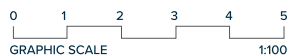
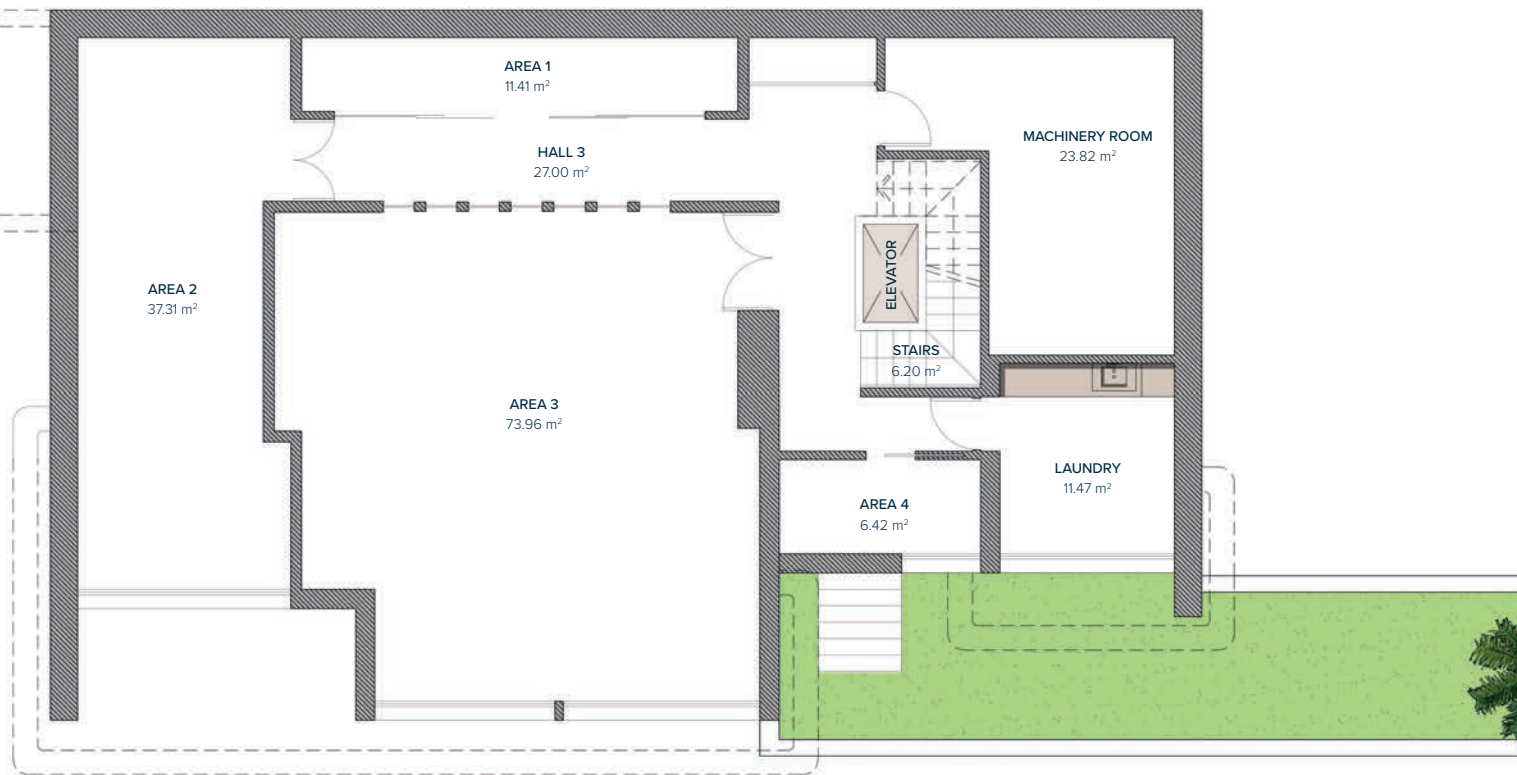
BEDROOMS

HALL 1	15,73 m ²
STAIRS	8,82 m ²
BATHROOM 2	4,67 m ²
BEDROOM 2	17,66 m ²
BATHROOM 3	4,69 m ²
BEDROOM 3	16,40 m ²
BATHROOM 4	5,00 m ²
BEDROOM 4	19,28 m ²
TOTAL	92,25 m²

PERGOLAS & TERRACES

PERGOLA 2	8,16 m ²
TERRACE 2	9,59 m ²
TERRACE 3	17,86 m ²
POOL MACHINE ROOM	10,97 m ²
TOTAL	46,13 m²

These images are not contractual but only for illustrative purposes. The images are subject to technical, legal or commercial modifications approved by the project management or the competent authority. The 3D images corresponding to the facades, common elements, and the rest of the spaces are merely indicative and will be subject to verification or Modification in the technical projects. The furniture of the 3D images is not included and the equipment of the villas will be indicated in the corresponding building and quality specifications. The energy certification corresponds with the one established in the project in process. All the information and documentation will be provided according to the terms established in the Royal Decree 515/1989 and in the rest of the autonomous or state regulations currently in force that could complement the Mentioned Decree.



Entrance	2
	1
	0
	-1

VILLA N°7

BASEMENT

HALL 3	27,00 m ²
AREA 1	11,41 m ²
AREA 2	37,31 m ²
AREA 3	73,96 m ²
AREA 4	6,42 m ²
STAIRS	6,20 m ²
MACHINERY ROOM	23,82 m ²
LAUNDRY	11,47 m ²
PATIO (LIFT)	1,80 m ²
TOTAL	199,39 m²

These images are not contractual but only for illustrative purposes. The images are subject to technical, legal or commercial modifications approved by the project management or the competent authority. The 3D images corresponding to the facades, common elements, and the rest of the spaces are merely indicative and will be subject to verification or Modification in the technical projects. The furniture of the 3D images is not included and the equipment of the villas will be indicated in the corresponding building and quality specifications. The energy certification corresponds with the one established in the project in process. All the information and documentation will be provided according to the terms established in the Royal Decree 515/1989 and in the rest of the autonomous or state regulations currently in force that could complement the Mentioned Decree.

