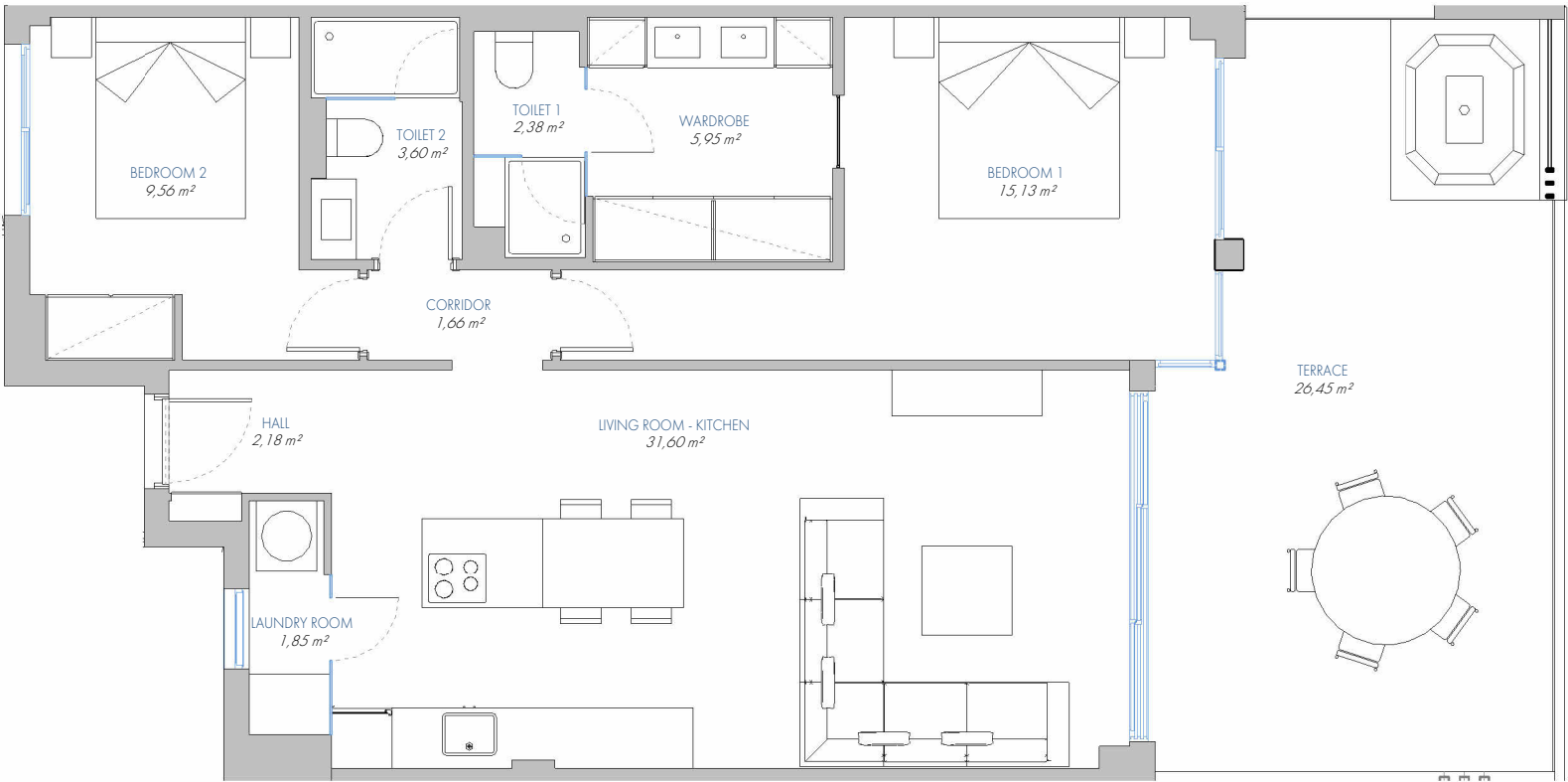


UNIQUE APARTMENT Nº 112

8.P2.C

BUILT AREA	
Living Area	84,77 m ²
Terrace Area	28,72 m ²
TOTAL BUILT AREA:	113,49 m ²

ACCORDING TO D. 218/2005	
Useful Area	81,30 m ²
Built Area	107,75 m ²



1:75

(*) This plan may be modified depending on progress of the development. The furniture shown is purely for decorative purposes. The project manager reserves the right to make the necessary changes for any possible functional, aesthetic and legal reasons, without this negatively affecting the quality of the construction. Illustrative dimensions