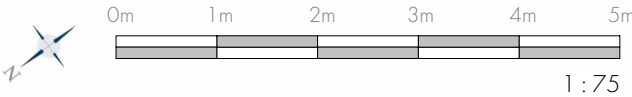
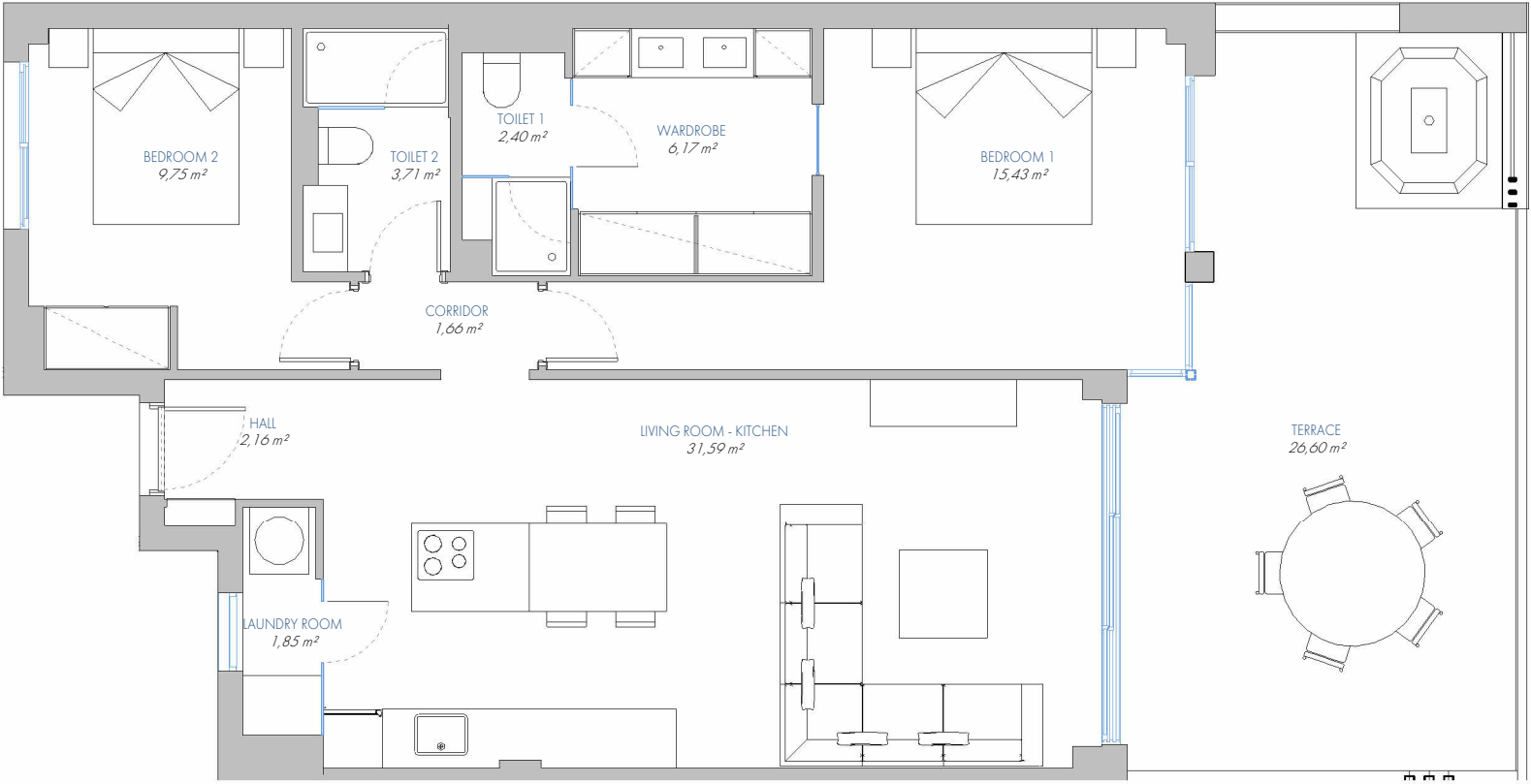


UNIQUE APARTMENT N° 167

11.P2.C

BUILT AREA	
Living Area	87,28 m²
Terrace Area	29,34 m²
TOTAL BUILT AREA:	116,62 m²

ACCORDING TO D. 218/2005	
Useful Area	82,19 m²
Built Area	110,80 m²



(*) This plan may be modified depending on progress of the development. The furniture shown is purely for decorative purposes. The project manager reserves the right to make the necessary changes for any possible functional, aesthetic and legal reasons, without this negatively affecting the quality of the construction. Illustrative dimensions