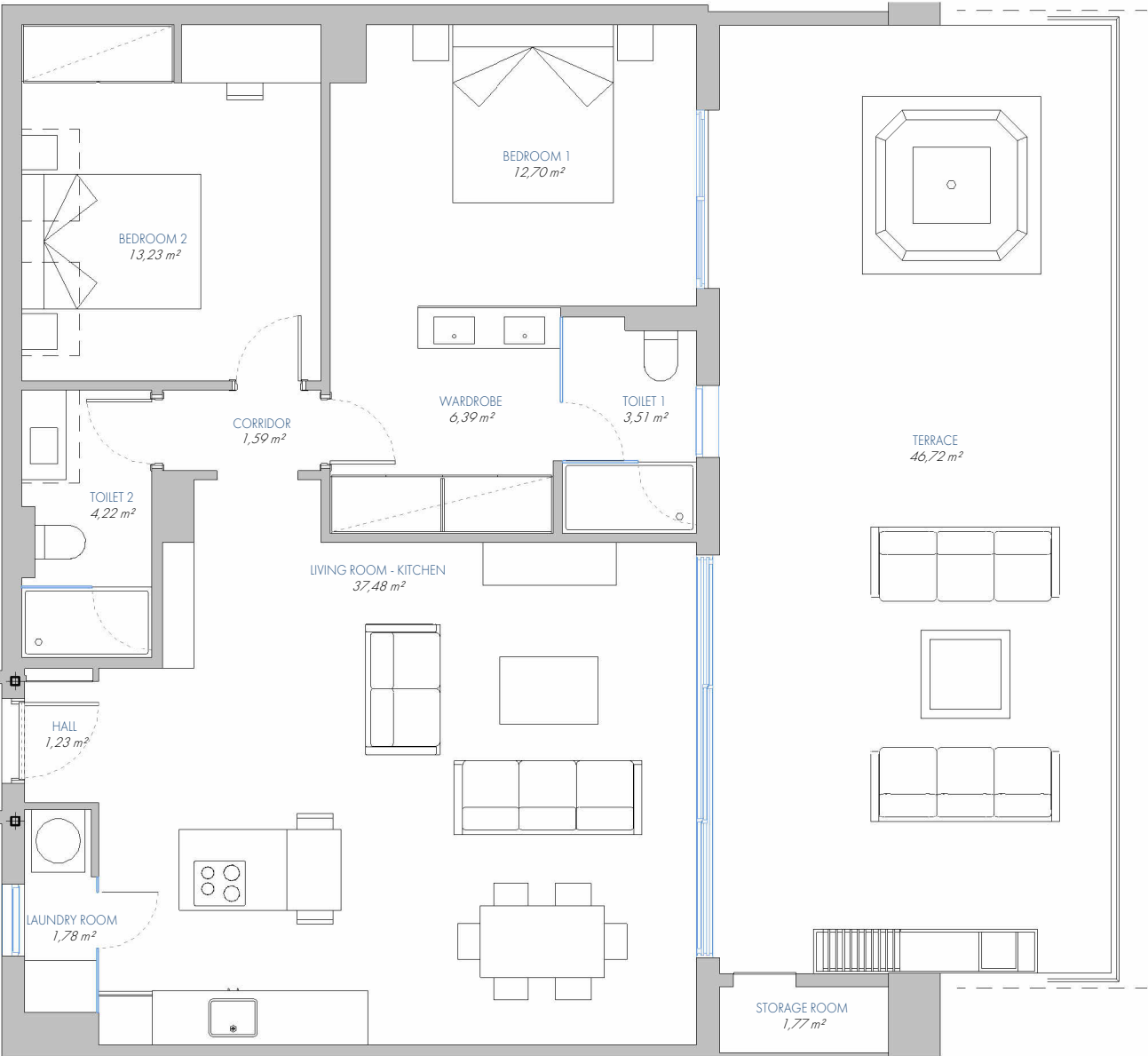


UNIQUE SKY SOLARIUM N° 187

12.PA.C

BUILT AREA	
Living Area	94,10 m²
Terrace Area	51,17 m²
TOTAL BUILT AREA:	145,27 m²

ACCORDING TO D. 218/2005	
Useful Area	92,21 m²
Built Area	119,78 m²



1:75

(*) This plan may be modified depending on progress of the development. The furniture shown is purely for decorative purposes. The project manager reserves the right to make the necessary changes for any possible functional, aesthetic and legal reasons, without this negatively affecting the quality of the construction. Illustrative dimensions