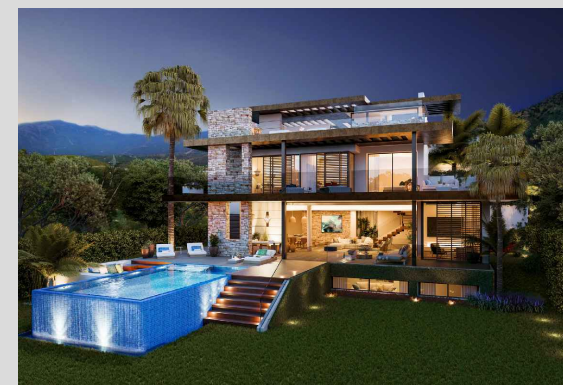


These images are not contractual but only for illustrative purposes. The images are subject to technical, legal or commercial Modifications approved by the project Management or the competent authority. The 3D images corresponding to the façades, common elements, and the rest of the spaces are merely indicative and will be subject to verification or modification in the technical projects. The furniture of the 3D images is not included and the equipment of the villas will be indicated in the corresponding BUILDING and quality specifications. The energy certification corresponds with the one established in the project in process.

All the information and documentation will be provided according to the terms established in the Royal Decree 515/1989 and in the rest of the autonomous or state regulations currently in force that could complement the mentioned Decree.

## VILLA 01 Site Plan

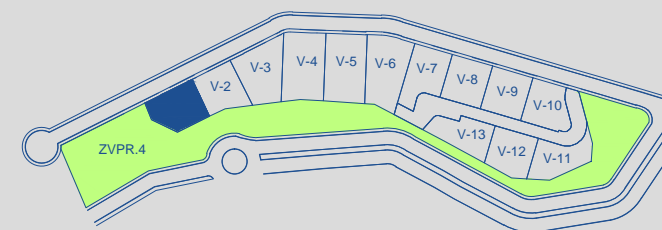


### APPROXIMATE AREAS M<sup>2</sup>

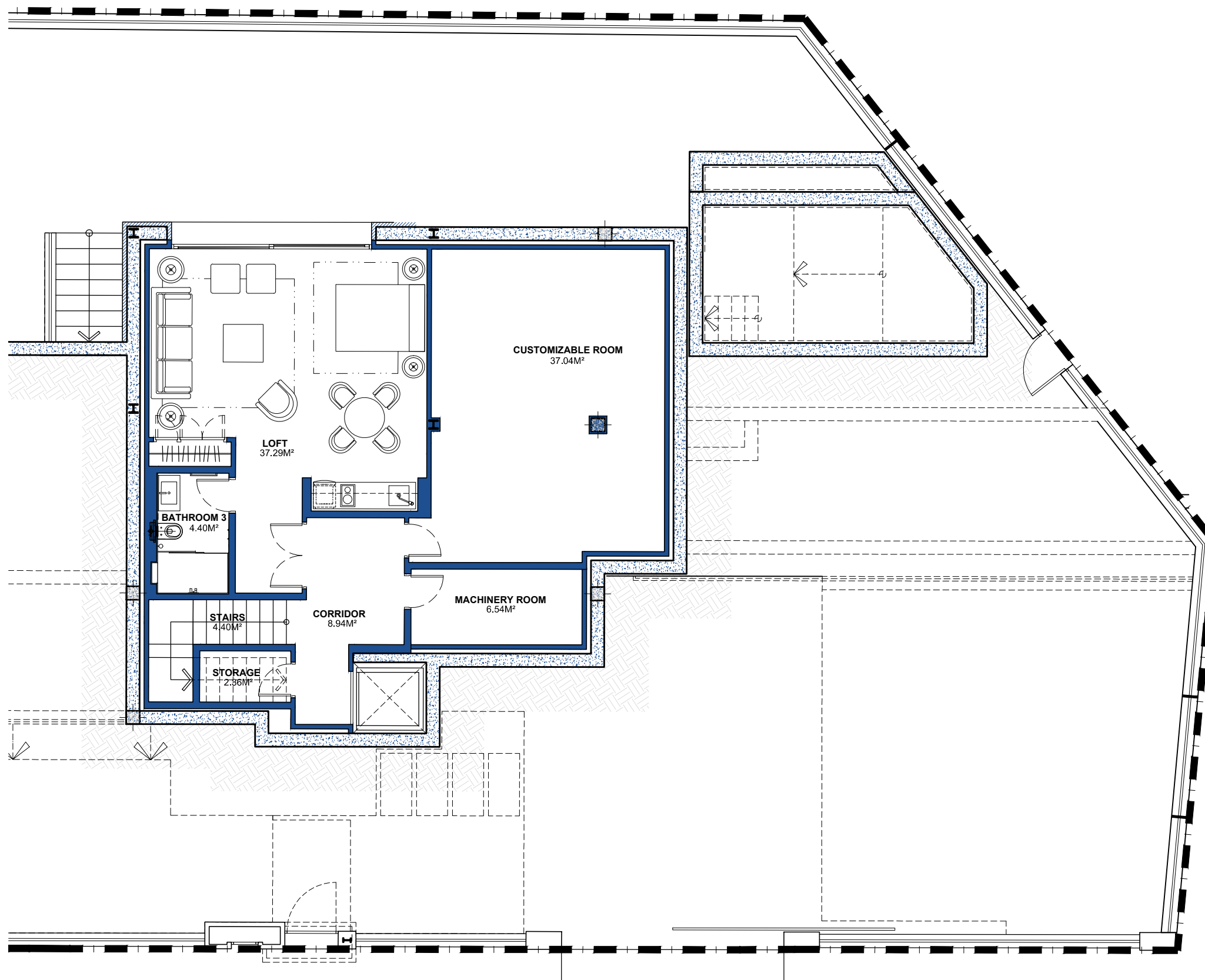
Basement built area	133,01
Ground floor built area	184,74
First floor built area	138,06
Solarium built area	92,80
Parking area	51,98
Pool area	20,46
<b>Total</b>	<b>621,05</b>

Plot 01 area	527,95
Community green area	5.388,69
<b>Total useful area</b>	<b>269,55</b>

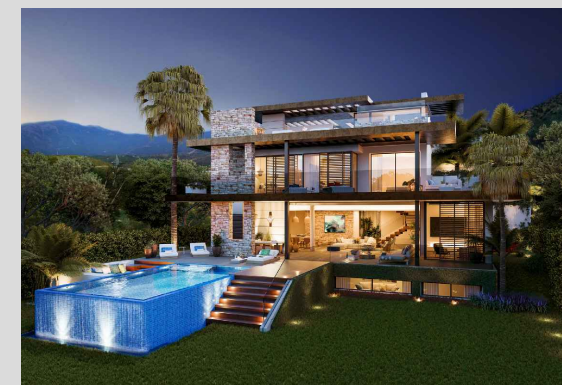
### SITE PLAN







## VILLA 01 Basement

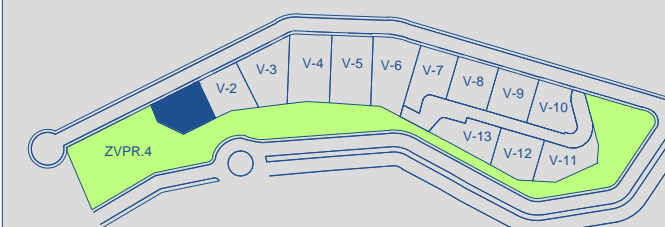


**BUILT AREA** 133,01 M<sup>2</sup>

**APPROXIMATE USEFUL AREAS** M<sup>2</sup>

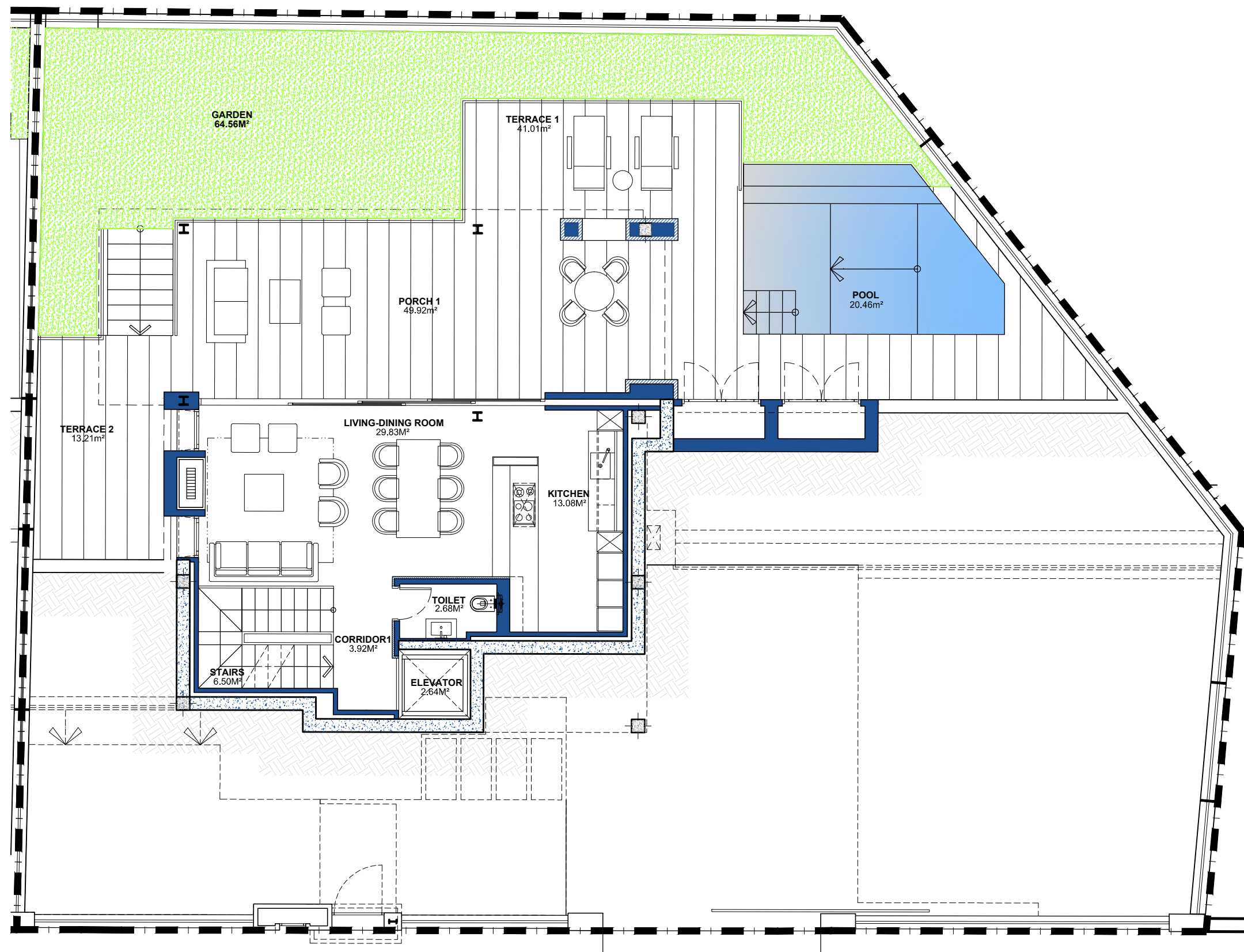
Loft	37,29
Customizable Room	37,04
Bathroom 3	4,40
Other Areas	22,24
Total	100,97

## SITE PLAN

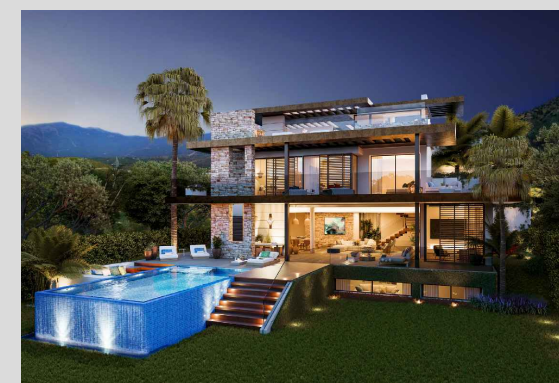


SCALE BAR  
0 0.5 1 2 3M

These images are not contractual but only for illustrative purposes. The images are subject to technical, legal or commercial Modifications approved by the project Management or the competent authority. The 3D images corresponding to the façades, common elements, and the rest of the spaces are merely indicative and will be subject to verification or Modification in the technical projects. The furniture of the 3D images is not included and the equipment of the villas will be indicated in the corresponding Building and quality specifications. The energy certification corresponds with the one established in the project in process. All the information and documentation will be provided according to the terms established in the Royal Decree 515/1989 and in the rest of the autonomous or state regulations currently in force that could complement the mentioned Decree.



## VILLA 01 Ground Floor

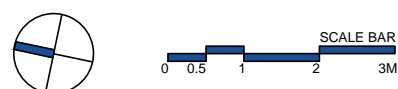
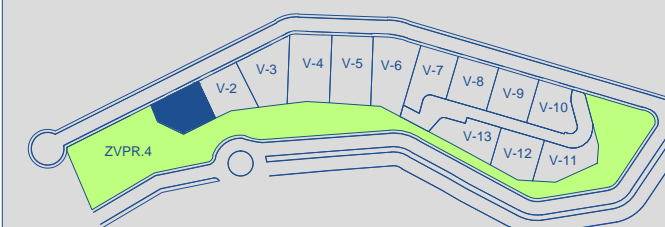


**BUILT AREA** 184,74 M<sup>2</sup>

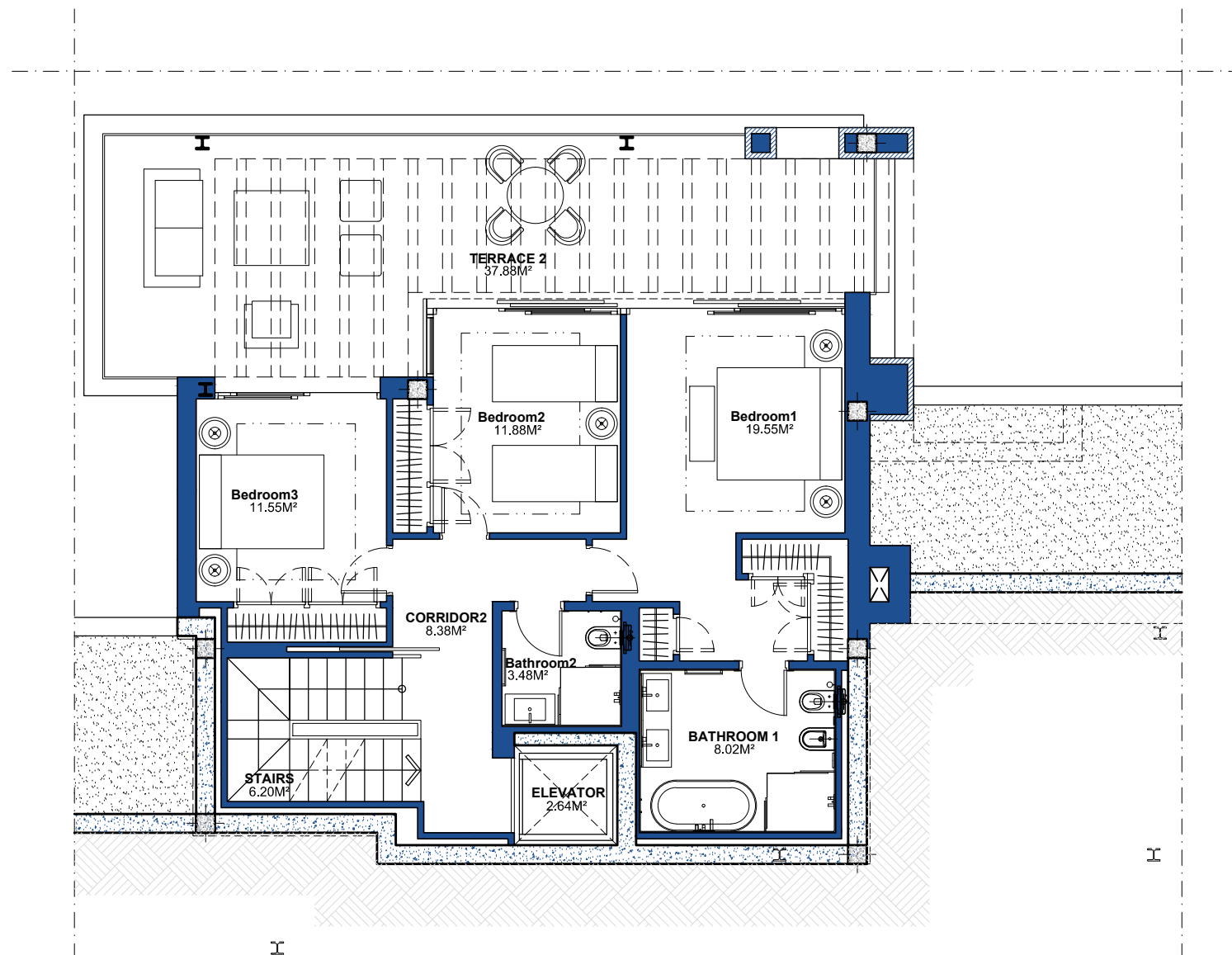
**APPROXIMATE USEFUL AREAS** M<sup>2</sup>

Living-Dining Room	29,83
Kitchen	13,08
Toilet	2,68
Other Areas	12,76
Porches and Terraces	104,14
	162,79
Pool	20,46
Garden	64,56
Total	247,81

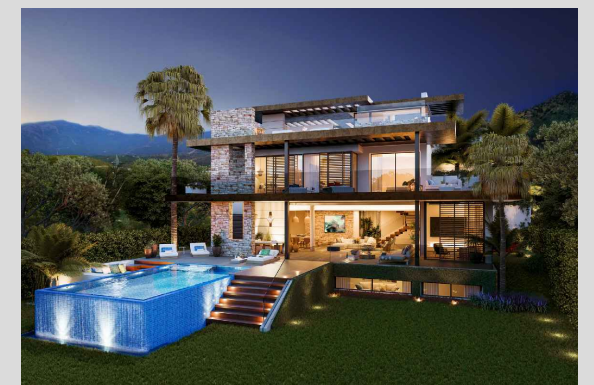
## SITE PLAN



These images are not contractual but only for illustrative purposes. The images are subject to technical, legal or commercial modifications approved by the project Management or the competent authority. The 3D images corresponding to the façades, common elements, and the rest of the spaces are merely indicative and will be subject to verification or modification in the technical projects. The furniture of the 3D images is not included and the equipment of the villas will be indicated in the corresponding Building and quality specifications. The energy certification corresponds with the one established in the project in process. All the information and documentation will be provided according to the terms established in the Royal Decree 515/1989 and in the rest of the autonomous or state regulations currently in force that could complement the mentioned Decree.



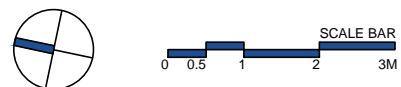
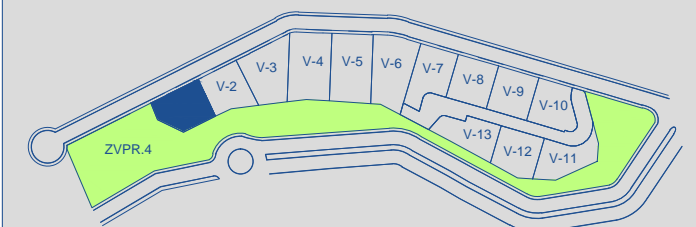
## VILLA 01 First Floor



**BUILT AREA** 138,06 M<sup>2</sup>

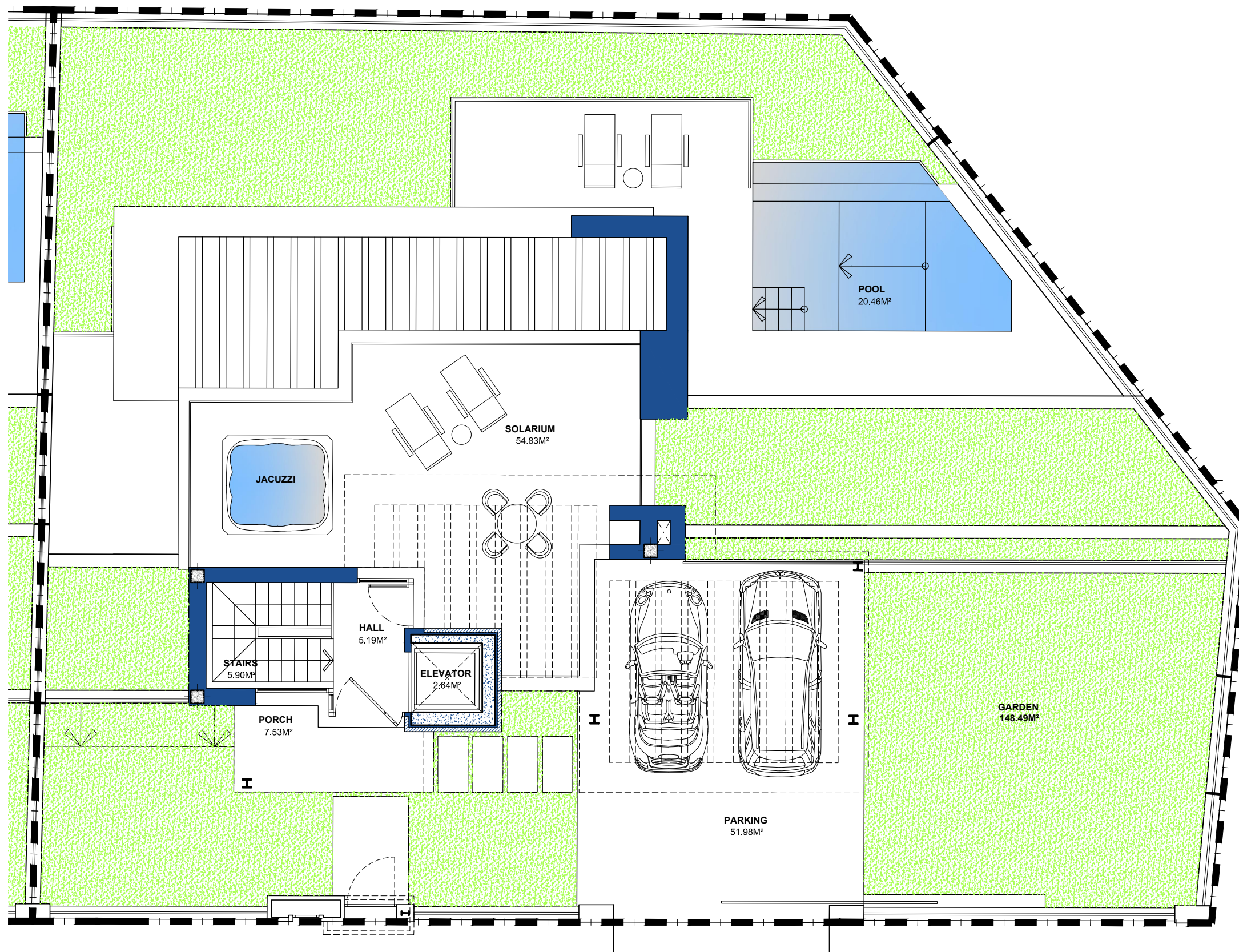
APPROXIMATE USEFUL AREAS	M <sup>2</sup>
Bedroom 1	19,55
Bedroom 2	11,88
Bedroom 3	11,55
Bathroom 1	8,02
Bathroom 2	3,48
Other Areas	17,22
Porches and Terraces	37,88
Total	109.58

## SITE PLAN

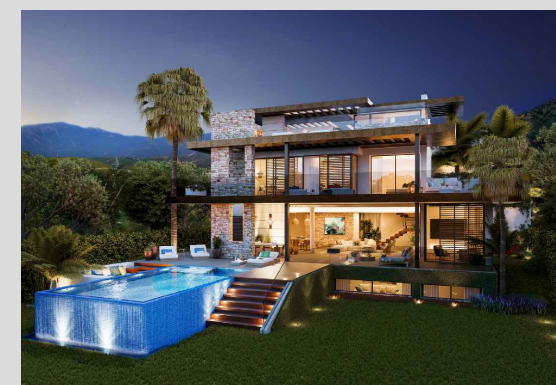


These iMages are not contractual but only for illustrative purposes. The iMages are subject to technical, legal or coMmercial Modifications approved by the project ManageMent or the coMpetent authority. The 3D iMages corresponding to the façades , coMMon eleMents, and the rest of the spaces are Merely indicative and will be subject to verification or Modification in the technical projects. The furniture of the 3D iMages is not included and the equipMent of the villas will be indicated in the corresponding BUILTing and quality specifications. The energy certification corresponds with the one established in the project in process. All the inforMation and docuMentation will be provided according to the terMs established in the Royal Decree 515/1989 and in the rest of the autonoMous or state regulations currently in force that could coMpleMent the Mentioned Decree.





## VILLA 01 Solarium

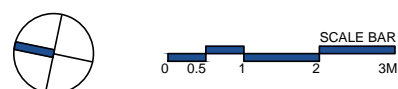
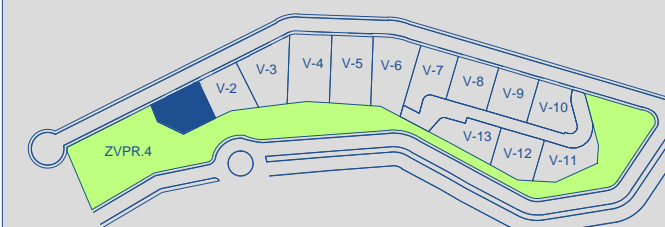


**BUILT AREA** 92,80 M<sup>2</sup>

**APPROXIMATE USEFUL AREAS** M<sup>2</sup>

Hall	5,19
Other Areas	8,54
Porches and Terraces	62,36
Parking	76,09
Garden	51,98
Total	148,49
	276,56

## SITE PLAN



These images are not contractual but only for illustrative purposes. The images are subject to technical, legal or commercial Modifications approved by the project Management or the competent authority. The 3D images corresponding to the façades, common elements, and the rest of the spaces are merely indicative and will be subject to verification or modification in the technical projects. The furniture of the 3D images is not included and the equipment of the villas will be indicated in the corresponding building and quality specifications. The energy certification corresponds with the one established in the project in process. All the information and documentation will be provided according to the terms established in the Royal Decree 515/1989 and in the rest of the autonomous or state regulations currently in force that could complement the mentioned decree.