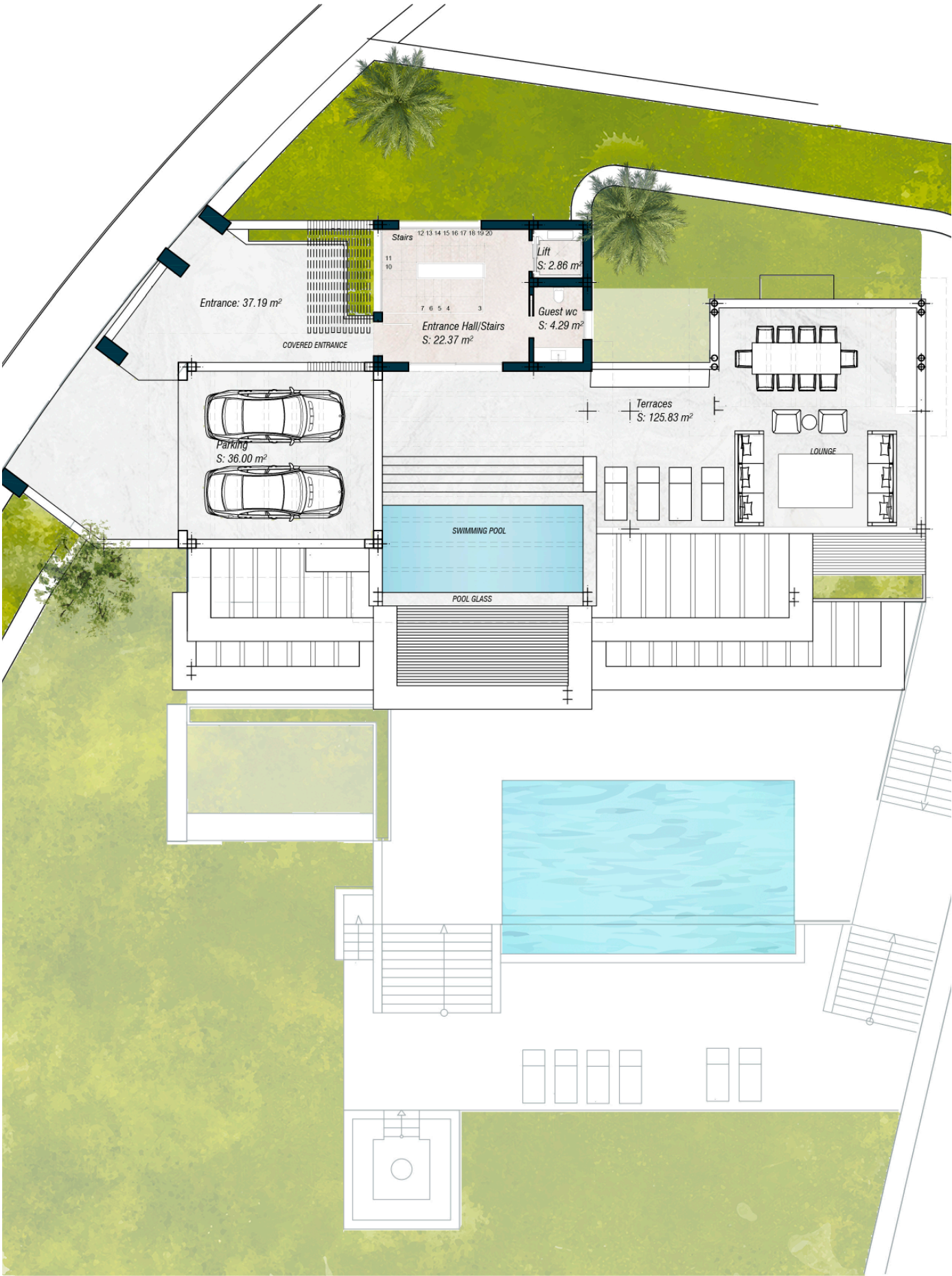


VILLA 11
SOLARIUM



Plot Surface 2010,60 sqm

Basement 465,24 sqm

Ground Floor 304,03 sqm

Upper Floor 172,37 sqm

Solarium 34,88 sqm

Total Interior 976,52 sqm

Covered Terraces 27,00 sqm

Uncovered Terraces 314,67 sqm

Exterior Parking 101,08 sqm

Swimming Pool 75,64 sqm

Total Exterior 518,39 sqm

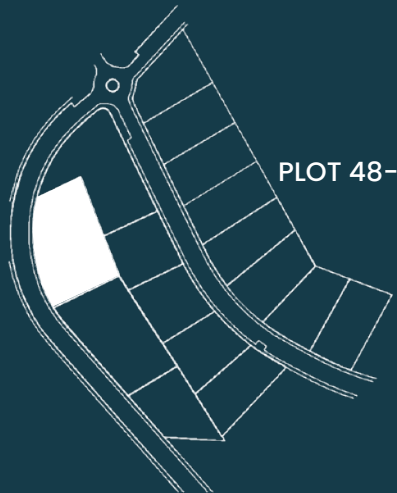
Total Exterior & Interior* 1494,91 sqm

Bedrooms 3

Bathrooms 3

Toilets 2

Exterior Parking 2 cars



*All the surfaces detailed in this floor plan correspond to built areas.

The floor plan above is not final as it has been designed in accordance with the Building Execution Project and, consequently, THE VIEW CHASE DEVELOPMENT I S.L. reserves the right to include whatever changes due to technical and/or legal imperatives required by any public Administration or Agency. These changes, in any case, will be in accordance with the progress of the construction work. The accessory elements (for example, including the kitchen) are merely for illustrative purposes. The rotation sense of doors and the distribution of sanitary fittings are not binding. The surface areas shown are approximate and, may be altered for technical and/or legal reasons in the course of the construction work.

Developed by



VILLA 11
UPPER FLOOR

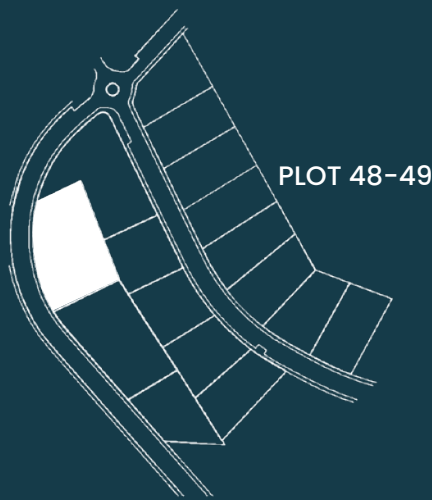


Plot Surface	2010,60 sqm
Basement	465,24 sqm
Ground Floor	304,03 sqm
Upper Floor	172,37 sqm
Solarium	34,88 sqm
Total Interior	976,52 sqm

Covered Terraces	27,00 sqm
Uncovered Terraces	314,67 sqm
Exterior Parking	101,08 sqm
Swimming Pool	75,64 sqm
Total Exterior	518,39 sqm

Total Exterior & Interior*	1494,91 sqm
---------------------------------------	--------------------

Bedrooms	3
Bathrooms	3
Toilets	2
Exterior Parking	2 cars

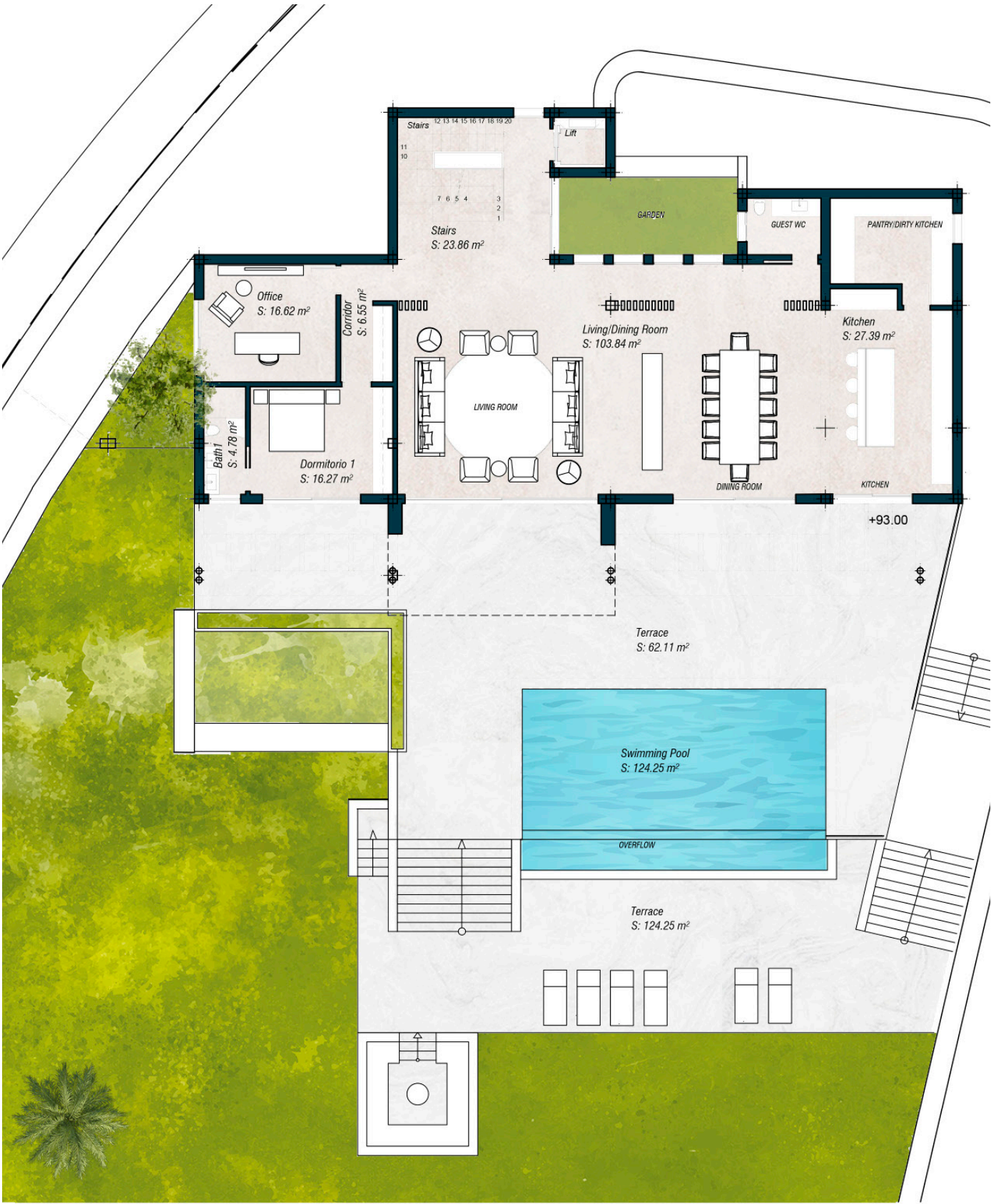


*All the surfaces detailed in this floor plan correspond to built areas.

The floor plan above is not final as it has been designed in accordance with the Building Execution Project and, consequently, THE VIEW CHASE DEVELOPMENT I S.L. reserves the right to include whatever changes due to technical and/or legal imperatives required by any public Administration or Agency. These changes, in any case, will be in accordance with the progress of the construction work. The accessory elements (for example, including the kitchen) are merely for illustrative purposes. The rotation sense of doors and the distribution of sanitary fittings are not binding. The surface areas shown are approximate and, may be altered for technical and/or legal reasons in the course of the construction work.

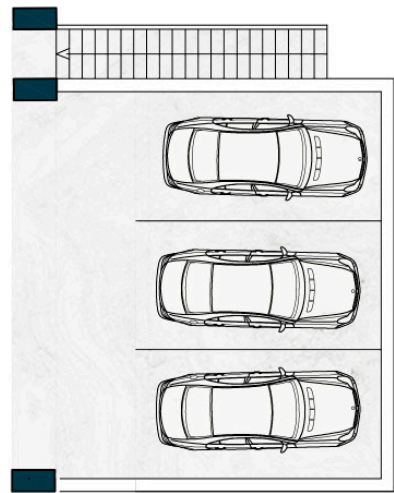
Developed by





SERVICE APARTMENT

UPPER FLOOR-OPTIONAL EXTERIOR GARAGE



VILLA 11 GROUND FLOOR

Plot Surface 2010,60 sqm

Basement 465,24 sqm

Ground Floor 304,03 sqm

Upper Floor 172,37 sqm

Solarium 34,88 sqm

Total Interior 976,52 sqm

Covered Terraces 27,00 sqm

Uncovered Terraces 314,67 sqm

Exterior Parking 101,08 sqm

Swimming Pool 75,64 sqm

Total Exterior 518,39 sqm

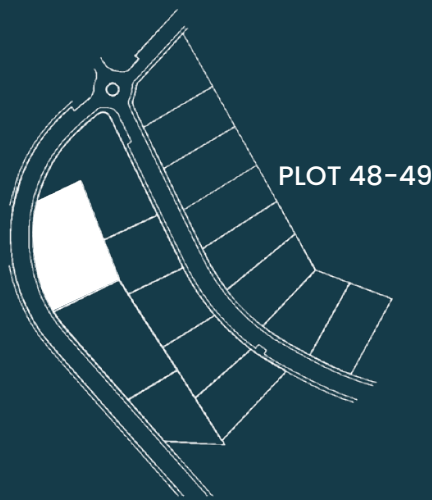
Total Exterior & Interior* 1494,91 sqm

Bedrooms 3

Bathrooms 3

Toilets 2

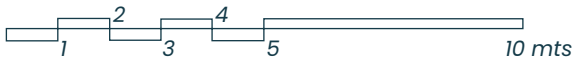
Exterior Parking 2 cars



*All the surfaces detailed in this floor plan correspond to built areas.

The floor plan above is not final as it has been designed in accordance with the Building Execution Project and, consequently, THE VIEW CHASE DEVELOPMENT I S.L. reserves the right to include whatever changes due to technical and/or legal imperatives required by any public Administration or Agency. These changes, in any case, will be in accordance with the progress of the construction work. The accessory elements (for example, including the kitchen) are merely for illustrative purposes. The rotation sense of doors and the distribution of sanitary fittings are not binding. The surface areas shown are approximate and, may be altered for technical and/or legal reasons in the course of the construction work.

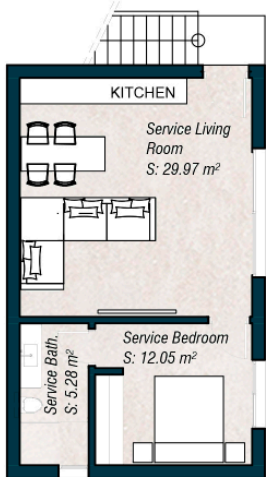
Developed by



VILLA 11
BASEMENT



LOW FLOOR-OPTIONAL SERVICE APARTMENT



Plot Surface 2010,60 sqm

Basement 465,24 sqm

Ground Floor 304,03 sqm

Upper Floor 172,37 sqm

Solarium 34,88 sqm

Total Interior 976,52 sqm

Covered Terraces 27,00 sqm

Uncovered Terraces 314,67 sqm

Exterior Parking 101,08 sqm

Swimming Pool 75,64 sqm

Total Exterior 518,39 sqm

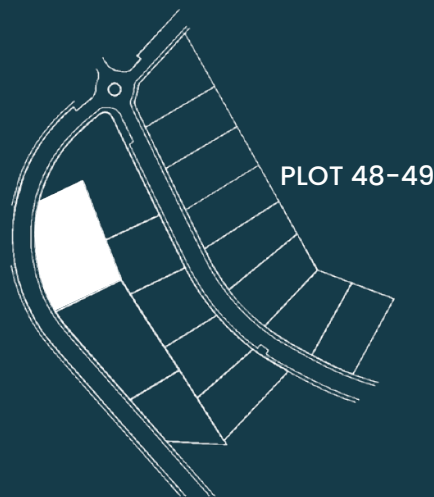
Total Exterior & Interior* 1494,91 sqm

Bedrooms 3

Bathrooms 3

Toilets 2

Exterior Parking 2 cars



*All the surfaces detailed in this floor plan correspond to built areas.

The floor plan above is not final as it has been designed in accordance with the Building Execution Project and, consequently, THE VIEW CHASE DEVELOPMENT I S.L. reserves the right to include whatever changes due to technical and/or legal imperatives required by any public Administration or Agency. These changes, in any case, will be in accordance with the progress of the construction work. The accessory elements (for example, including the kitchen) are merely for illustrative purposes. The rotation sense of doors and the distribution of sanitary fittings are not binding. The surface areas shown are approximate and, may be altered for technical and/or legal reasons in the course of the construction work.

Developed by



VILLA 11
SITE PLAN

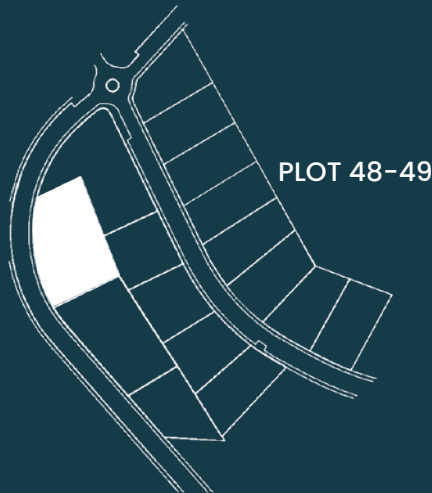
Plot Surface 2010,60 sqm

Basement 465,24 sqm
Ground Floor 304,03 sqm
Upper Floor 172,37 sqm
Solarium 34,88 sqm
Total Interior 976,52 sqm

Covered Terraces 27,00 sqm
Uncovered Terraces 314,67 sqm
Exterior Parking 101,08 sqm
Swimming Pool 75,64 sqm
Total Exterior 518,39 sqm

Total Exterior & Interior* 1494,91 sqm

Bedrooms 3
Bathrooms 3
Toilets 2
Exterior Parking 2 cars



*All the surfaces detailed in this floor plan correspond to built areas.

The floor plan above is not final as it has been designed in accordance with the Building Execution Project and, consequently, THE VIEW CHASE DEVELOPMENT I S.L. reserves the right to include whatever changes due to technical and/or legal imperatives required by any public Administration or Agency. These changes, in any case, will be in accordance with the progress of the construction work. The accessory elements (for example, including the kitchen) are merely for illustrative purposes. The rotation sense of doors and the distribution of sanitary fittings are not binding. The surface areas shown are approximate and, may be altered for technical and/or legal reasons in the course of the construction work.

Developed by

1 2 3 4 5 10 mts