

---

# Villa 2

Tipology B1

Bedrooms	Bathrooms	Orientation
4	5+2	E



VILLA 2

PLOT	979,04 m <sup>2</sup>
------	-----------------------

BUILT AREA

Living Area	506,78 m <sup>2</sup>
Terrace Area	177,58 m <sup>2</sup>

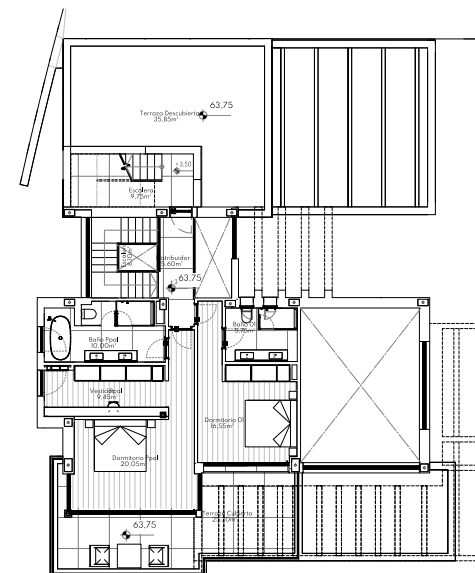
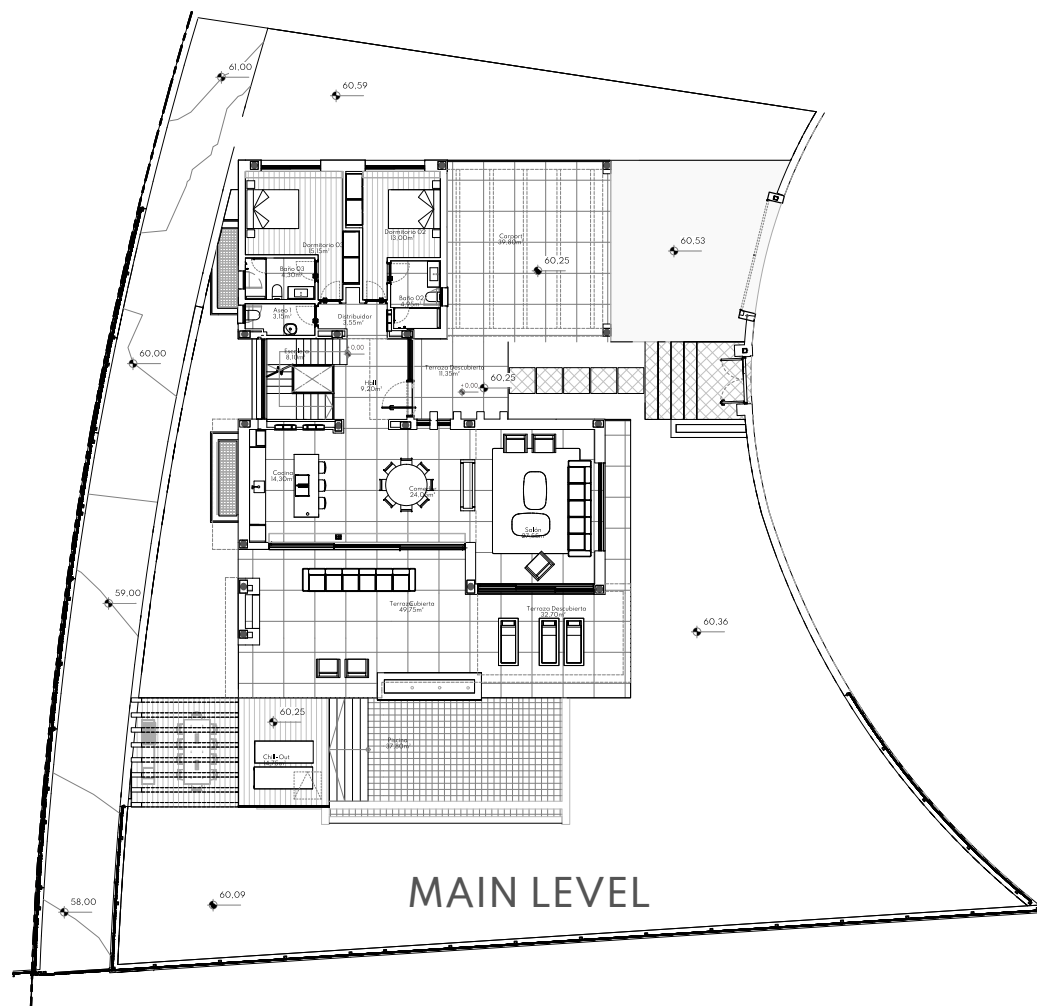
TOTAL BUILT AREA	684,35 m <sup>2</sup>
------------------	-----------------------

ACCORDING TO DECRETO 218/2005

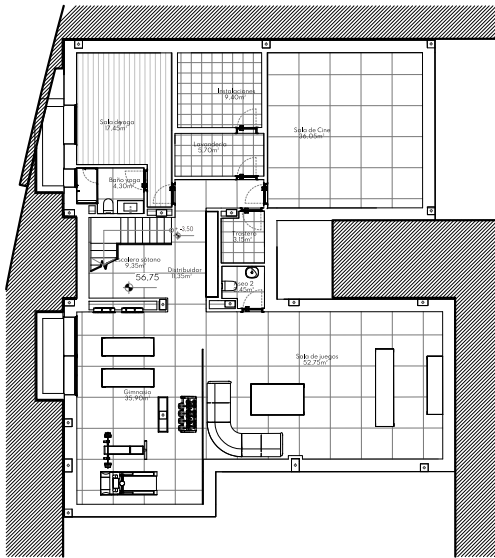
Useful Area	434,56 m <sup>2</sup>
Built Area	546,28 m <sup>2</sup>



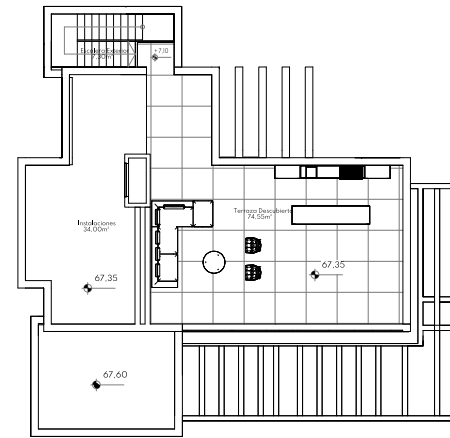
This plan may be modified depending on progress of the development. The furniture shown is purely for decorative purposes. The project manager reserves the right to make the necessary changes for any possible functional, aesthetic and legal reasons, without this negatively affecting the quality of the construction. Illustrative dimensions.



This plan may be modified depending on progress of the development. The furniture shown is purely for decorative purposes. The project manager reserves the right to make the necessary changes for any possible functional, aesthetic and legal reasons, without this negatively affecting the quality of the construction. Illustrative dimensions.



LOWER LEVEL



SOLARIUM



This plan may be modified depending on progress of the development. The furniture shown is purely for decorative purposes. The project manager reserves the right to make the necessary changes for any possible functional, aesthetic and legal reasons, without this negatively affecting the quality of the construction. Illustrative dimensions.