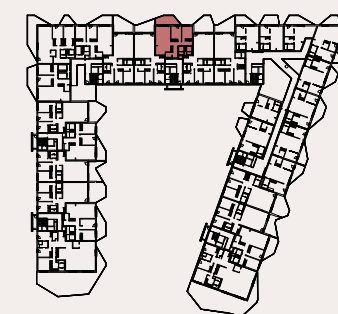
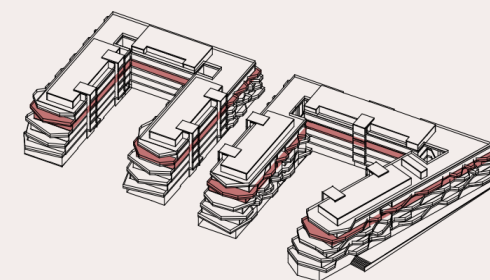
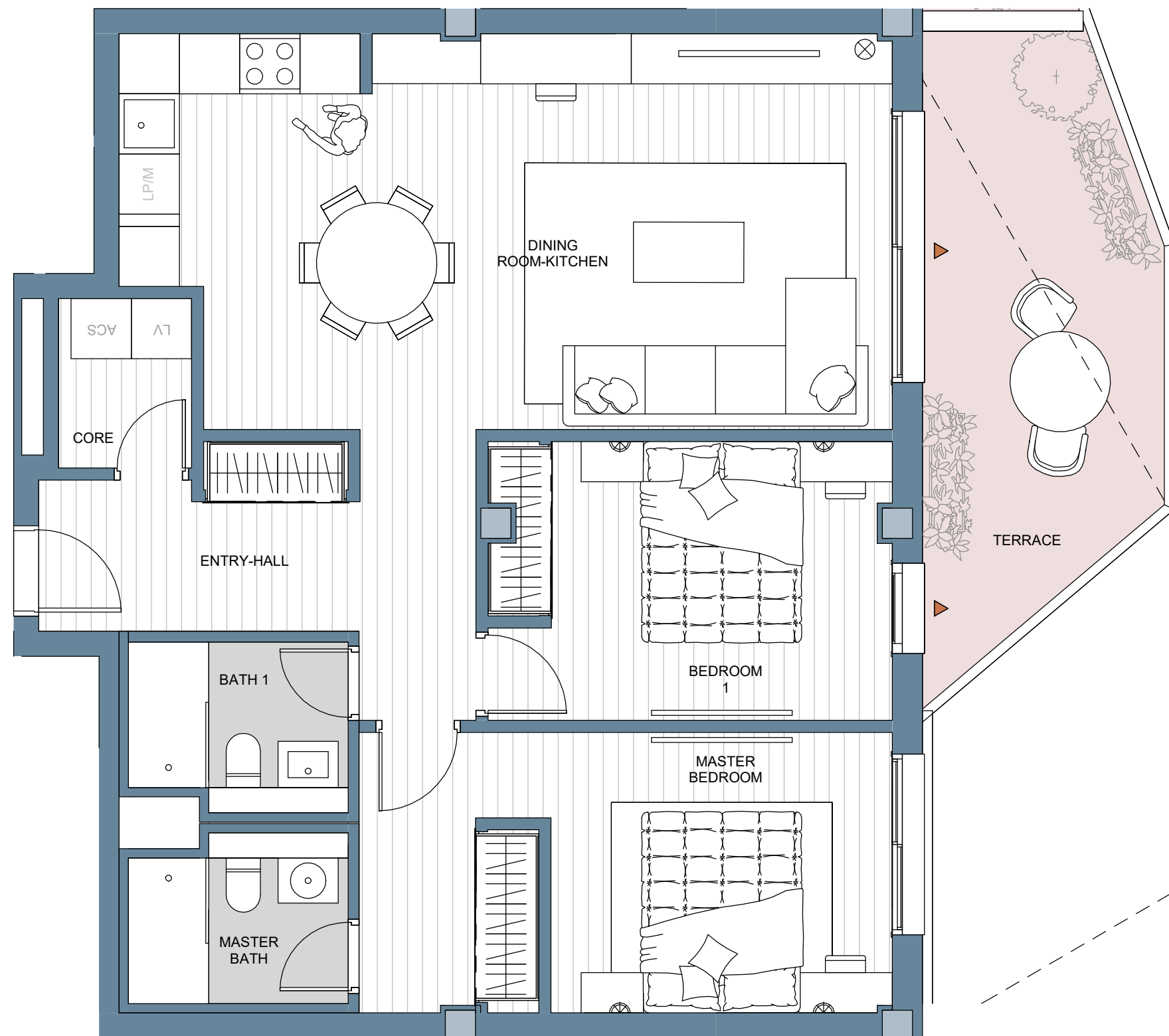


B ▶

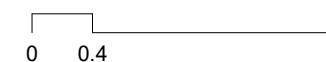


TOTAL LIVING AREA (m²)

BATH 1	3.52 m ²
BEDROOM 1	11.00 m ²
CORE	2.24 m ²
DINING ROOM-KITCHEN	29.04 m ²
ENTRY-HALL	8.68 m ²
MASTER BATH	3.52 m ²
MASTER BEDROOM	14.79 m ²
	72.79 m ²
TERRACE	12.99 m ²
	12.99 m ²

	PROJECT AREA	DECREE 218/2005
INTERIOR LIVING AREA	72.79	
TERRACE LIVING AREA	12.98	
TOTAL LIVING AREA	85.77	79.28
INT CONST AREA + PP. CA	99.24	-
TERRACE CONSTRUCTED AREA	13.88	-
TOTAL CONSTRUCTED AREA	113.12	105.73

(Include proper constructed area, CA proportional part and terrace)



The information contained in this plans can be subject to changes until the end of the project. In case of disagreement between the comercial information and the information of the last project approved, it will attend always the last project approved.

BASIC DESIGN 03/12/2024

H76

Block 04 - 3º B

