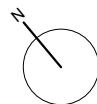
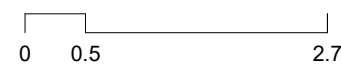


TOTAL LIVING AREA (m²)

BATH 1	3.44 m²
BEDROOM 1	12.31 m²
BEDROOM 2	14.35 m²
CORE	1.96 m²
DINING ROOM-KITCHEN	24.62 m²
ENTRY-HALL	9.56 m²
MASTER BATH	4.25 m²
MASTER BEDROOM	19.21 m²
PENTHOUSE TERRACE	45.08 m²
TOTAL	89.71 m²

	PROJECT AREA	DECREE 218/2005
INTERIOR LIVING AREA	89.70	
TERRACE LIVING AREA	45.08	
TOTAL LIVING AREA	134.78	98.67
INT CONST AREA + PP. CA	120.60	-
TERRACE CONSTRUCTED AREA	47.58	-
TOTAL CONSTRUCTED AREA	168.18	129.57

(Include proper constructed area, CA proportional part and terrace)



The information contained in this plans can be subject to changes until the end of the project. In case of disagreement between the comercial information and the information of the last project approved, it will attend always the last project approved.

BASIC DESIGN 03/12/2024

H81

Block 04 - Penthouse° A

