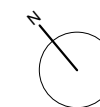
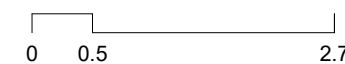


TOTAL LIVING AREA (m²)

BATH 1	3.03 m ²
BEDROOM 1	8.18 m ²
BEDROOM 2	9.38 m ²
CORE	2.12 m ²
DINING ROOM-KITCHEN	34.43 m ²
ENTRY-HALL	9.55 m ²
MASTER BATH	3.64 m ²
MASTER BEDROOM	13.55 m ²
	83.88 m ²
TERRACE	16.31 m ²
	16.31 m ²

	PROJECT AREA	DECREE 218/2005
INTERIOR LIVING AREA	83.88	
TERRACE LIVING AREA	16.30	
TOTAL LIVING AREA	100.18	92.03
INT CONST AREA + PP. CA	115.98	-
TERRACE CONSTRUCTED AREA	17.49	-
TOTAL CONSTRUCTED AREA	133.47	124.13
(Include proper constructed area, CA proportional part and terrace)		



The information contained in this plans can be subject to changes until the end of the project. In case of disagreement between the comercial information and the information of the last project approved, it will attend always the last project approved.

BASIC DESIGN 03/12/2024

H90 Block 05 - 1° D

