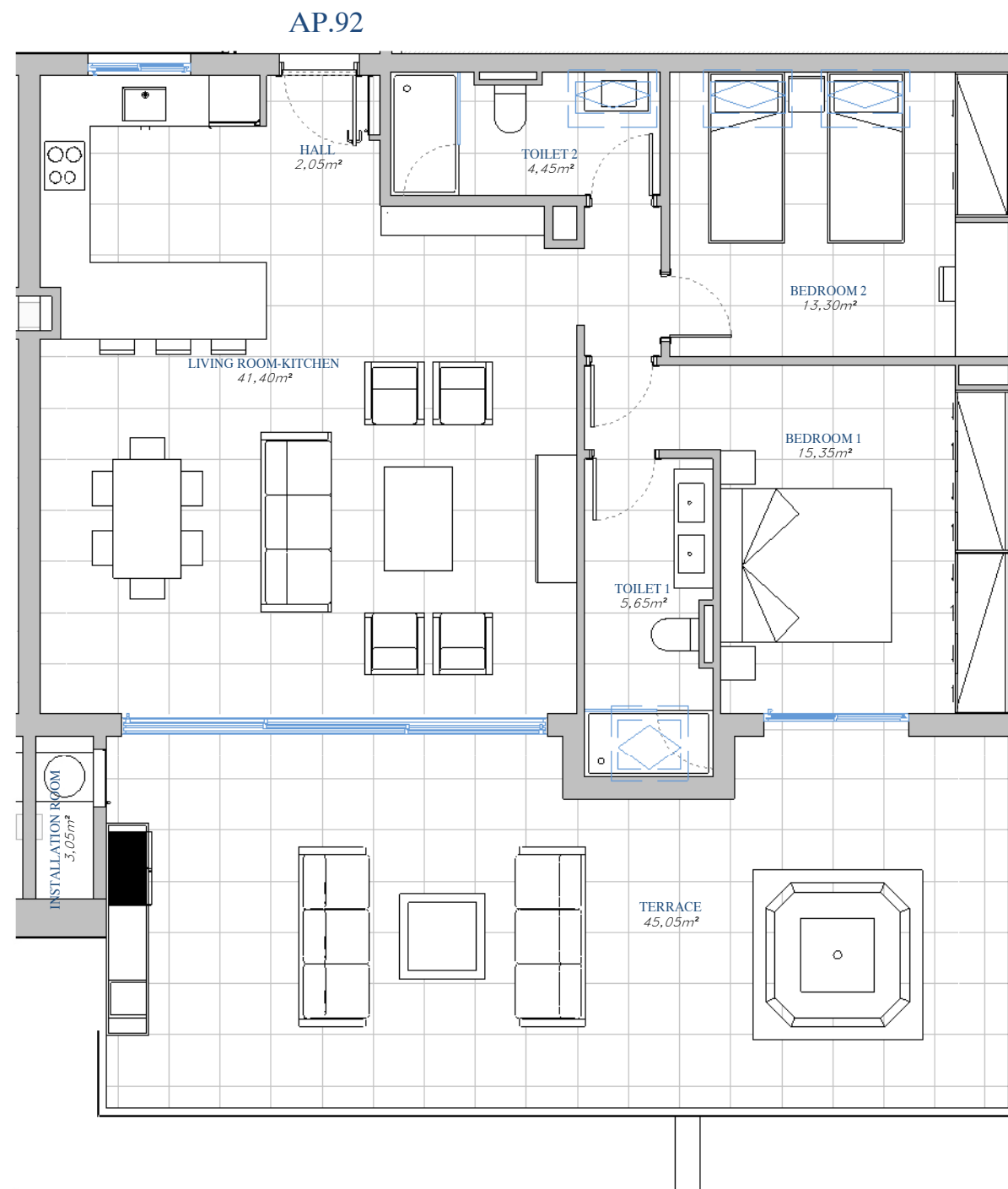


LOMAS 5

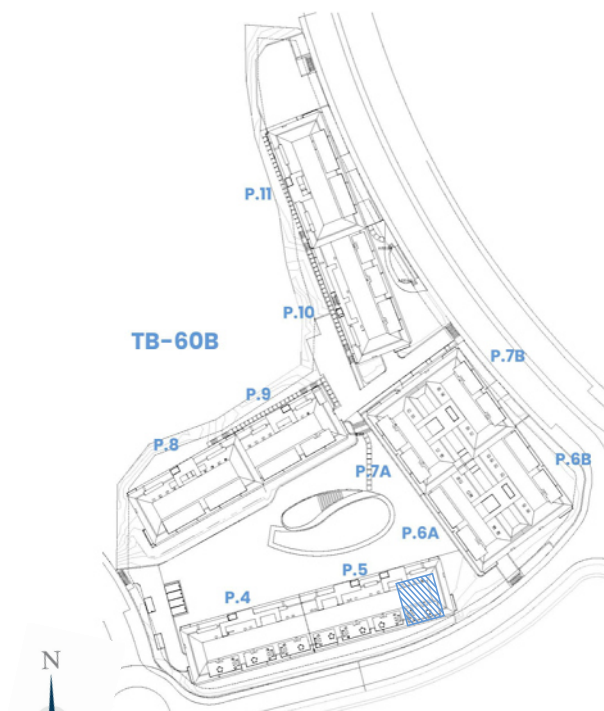
PORTAL 5
AP.Nº92 ATTIC



BUILT AREA

Living Area	95,19 m ²
Terrace Area	50,90 m ²
TOTAL BUILT AREA:	146,09 m ²

"This plan may be modified according to the development of the Execution Project and the construction. It does not constitute a contractual document. The reflected furnishing is for decoration purposes only. The Project Management reserves the right to make the necessary changes for functional, esthetic and legal reasons that may occur, without implying a decrease in the quality of the construction".



SITE PLAN



GRAPHIC SCALE

1 : 75

