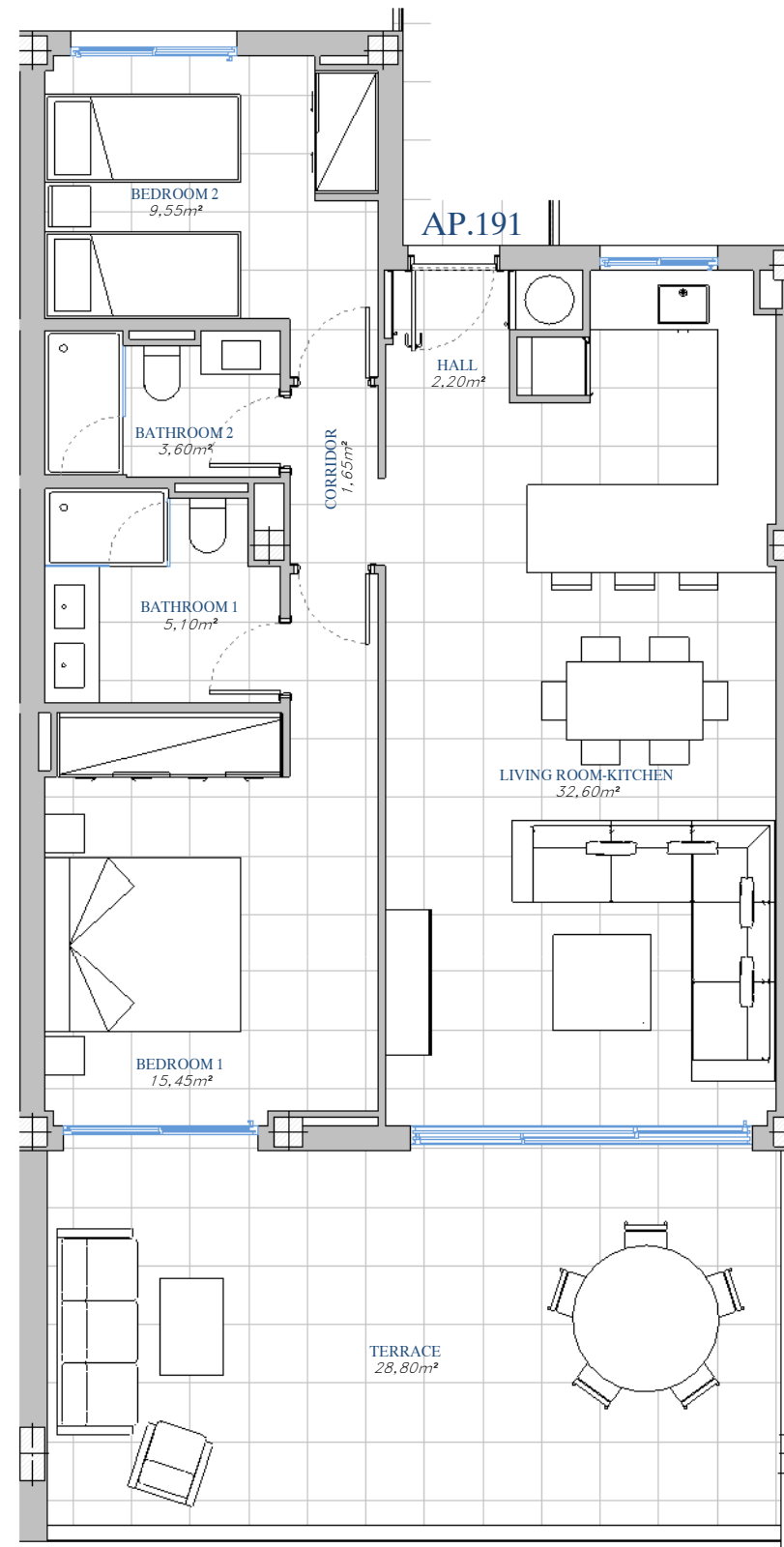
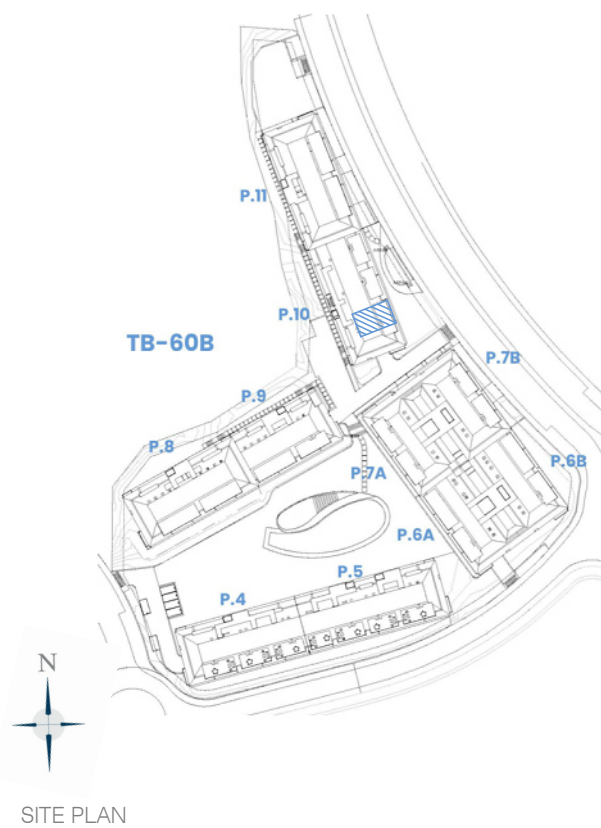




LOMAS DEL
HIGUERÓN
by TOP GESTIÓN

LOMAS 5

PORTAL 10
AP.Nº191
SECOND_FLOOR



HIGUERÓN
Resort

BUILT AREA

| | |
|-------------------|-----------------------|
| Living Area | 80,43 m ² |
| Terrace Area | 31,78 m ² |
| TOTAL BUILT AREA: | 112,21 m ² |

"This plan may be modified according to the development of the Execution Project and the construction. It does not constitute a contractual document. The reflected furnishing is for decoration purposes only. The Project Management reserves the right to make the necessary changes for functional, esthetic and legal reasons that may occur, without implying a decrease in the quality of the construction".

