

SKY TOP VILLA 3.8

USEABLE SURFACE AREA

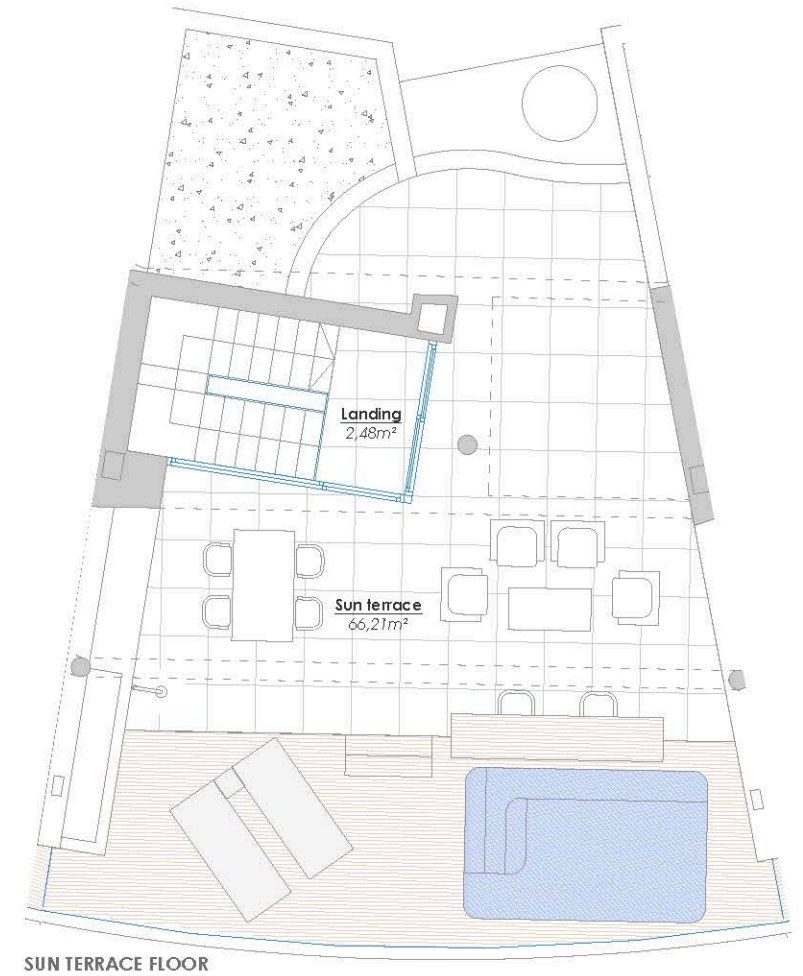
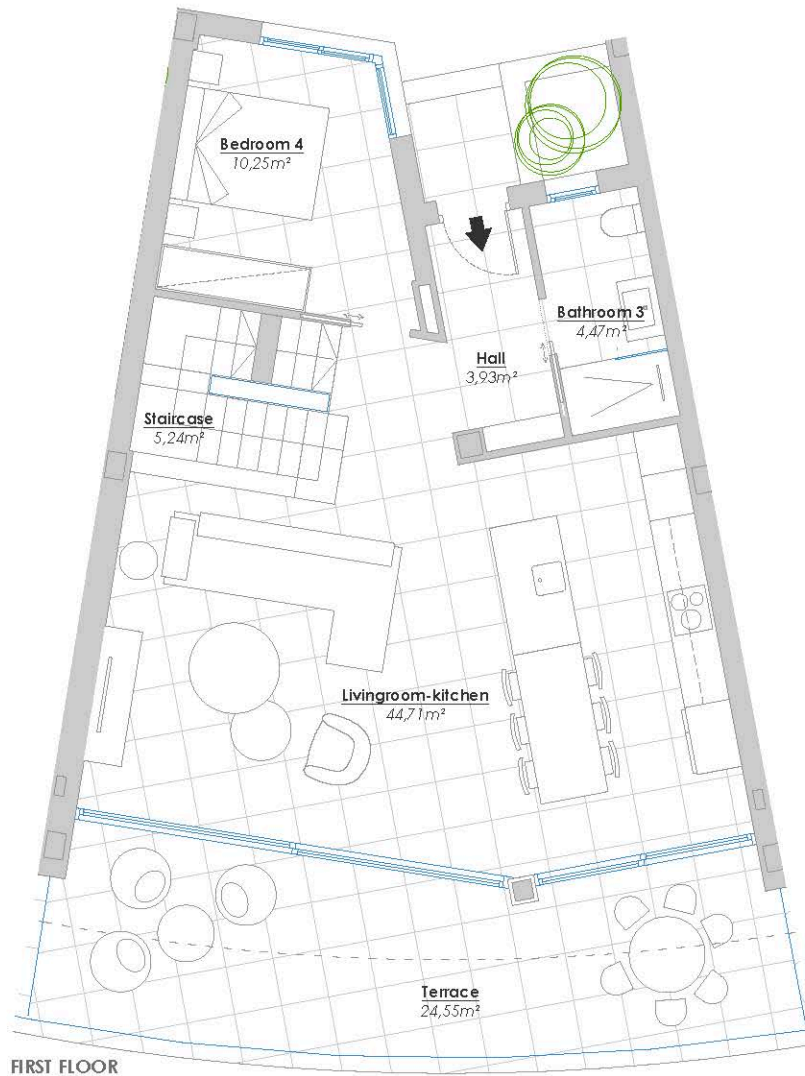
Indoors	141,95 m ²
Terraces	90,72 m ²
Garden	11,11 m ²

TOTAL NET FLOOR AREA: 156,15 m²
 ACCORDING TO ROYAL DECREE 218/2005

TOTAL BUILT ENCLOSED AREA: 170,30 m²



SITE PLAN



Graphic scale

(*) This plan may be modified depending on progress of the development. The furniture shown is purely for decorative purposes. The project manager reserves the right to make the necessary changes for any possible functional, aesthetic and legal reasons, without this negatively affecting the quality of the construction. Illustrative dimensions.

SKY TOP VILLA 3.8

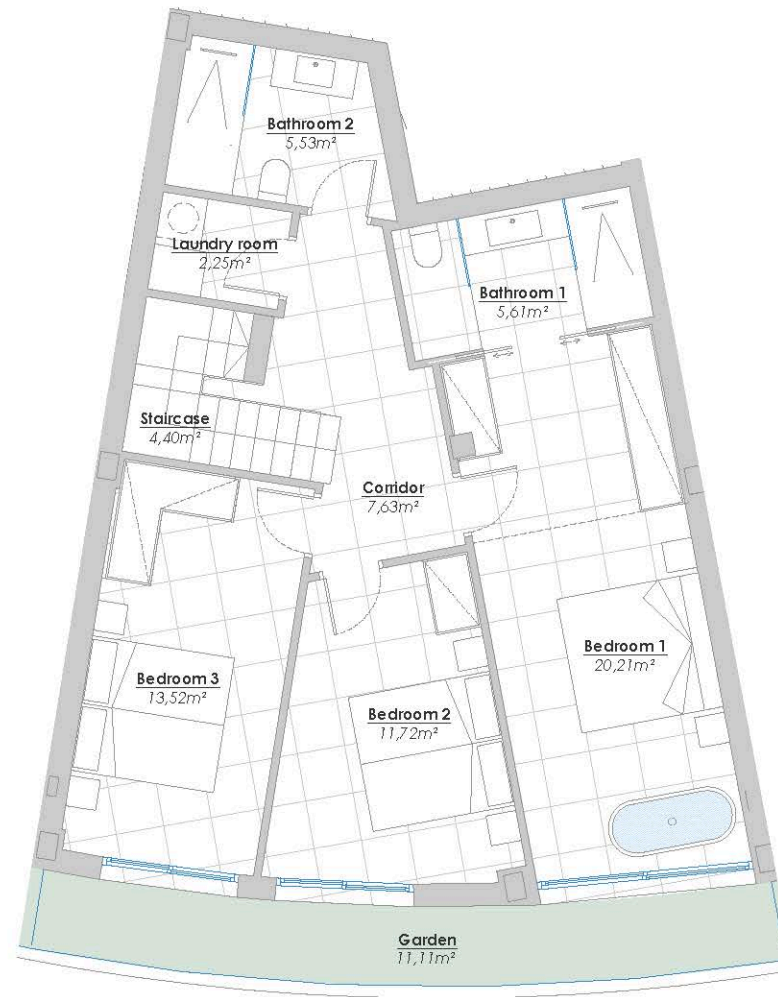
USEABLE SURFACE AREA

Indoors	141,95 m ²
Terraces	90,72 m ²
Garden	11,11 m ²

TOTAL NET FLOOR AREA: 156,15 m²
ACCORDING TO ROYAL DECREE 218/2005

TOTAL BUILT ENCLOSED AREA: 170,30 m²

SITE PLAN



GROUND FLOOR



Graphic scale

[*] This plan may be modified depending on progress of the development. The furniture shown is purely for decorative purposes. The project manager reserves the right to make the necessary changes for any possible functional, aesthetic and legal reasons, without this negatively affecting the quality of the construction. Illustrative dimensions.