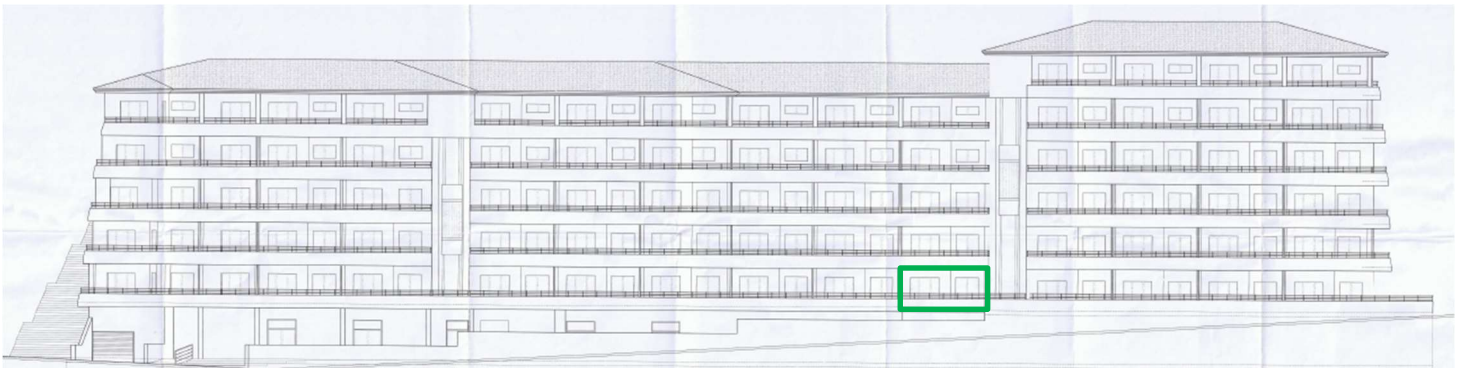
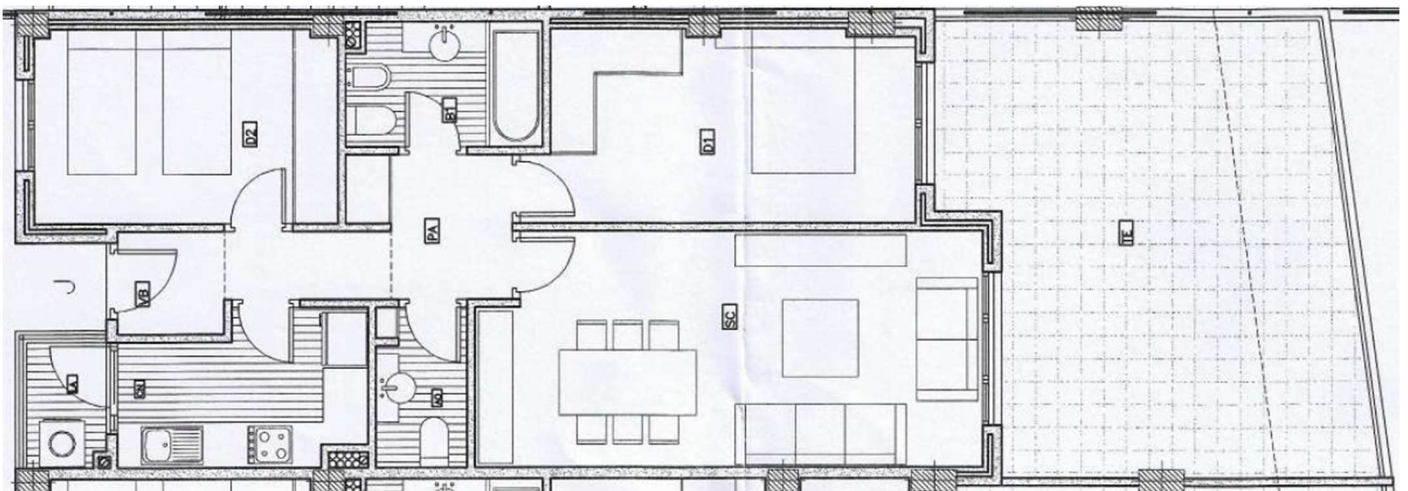


# 1ºJ



## Floor distribution



## Table of housing surfaces

Cuadro de superficies de viviendas 1ºJ		
Table of housing surfaces 1ºJ		
Nr	Posicion -- Position	m2
1	Vestibulo -- Lobby	1,89
2	Cocina -- Kitchen	6,06
3	Salon -- Living room	20,17
4	Pasillo -- Hall	5,56
5	Dormitorio 1 -- Bedroom 1	12,59
6	Dormitorio 2 -- Bedroom 2	10,13
7	Aseo -- Toilet	2,49
8	Baño 2 -- Bathroom 2	4,17
9	Lavadero -- Laundry	1,69
10	Terrazas cubiertas y descubiertas -- Covered and uncovered terraces	29,54
	<b>Superficie util total -- Total usable area</b>	<b>94,29</b>
	<b>Superficie total construida -- Vivienda Total built area - Housing</b>	<b>99,80</b>
	ZC. Zonas comunes -- CA. Common areas	19,40
	<b>Total Vivienda + terrazas + ZC -- Total Housing + terraces + CA</b>	<b>119,20</b>
	Total computable legalmente -- Total legally computable	103,87

Dimensions and surfaces

