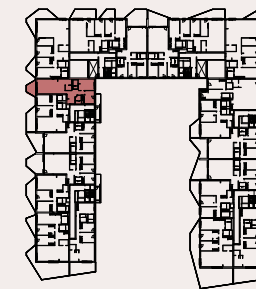
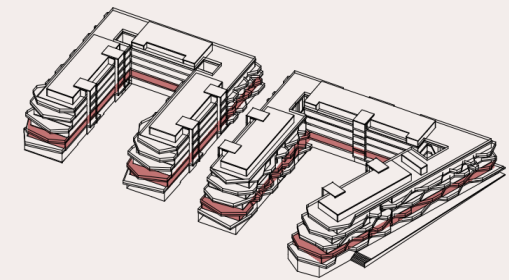


▲  
C



TOTAL LIVING AREA (m<sup>2</sup>)

BATH 1	3.70 m <sup>2</sup>
BEDROOM 1	9.89 m <sup>2</sup>
CORE	2.16 m <sup>2</sup>
DINING ROOM	21.20 m <sup>2</sup>
ENTRY-HALL	11.92 m <sup>2</sup>
KITCHEN	8.47 m <sup>2</sup>
MASTER BATH	3.64 m <sup>2</sup>
MASTER BEDROOM	12.14 m <sup>2</sup>
	73.11 m <sup>2</sup>
TERRACE	7.29 m <sup>2</sup>
	7.29 m <sup>2</sup>

	PROJECT AREA	DECREE 218/2005
INTERIOR LIVING AREA	73.12	
TERRACE LIVING AREA	7.29	
TOTAL LIVING AREA	80.41	76.76
INT CONST AREA + PP. CA	100.90	-
TERRACE CONSTRUCTED AREA	7.95	-
TOTAL CONSTRUCTED AREA	108.85	104.54

(Include proper constructed area, CA proportional part and terrace)

