

GROUND FLOOR

ENTRANCE & LIVING AREA

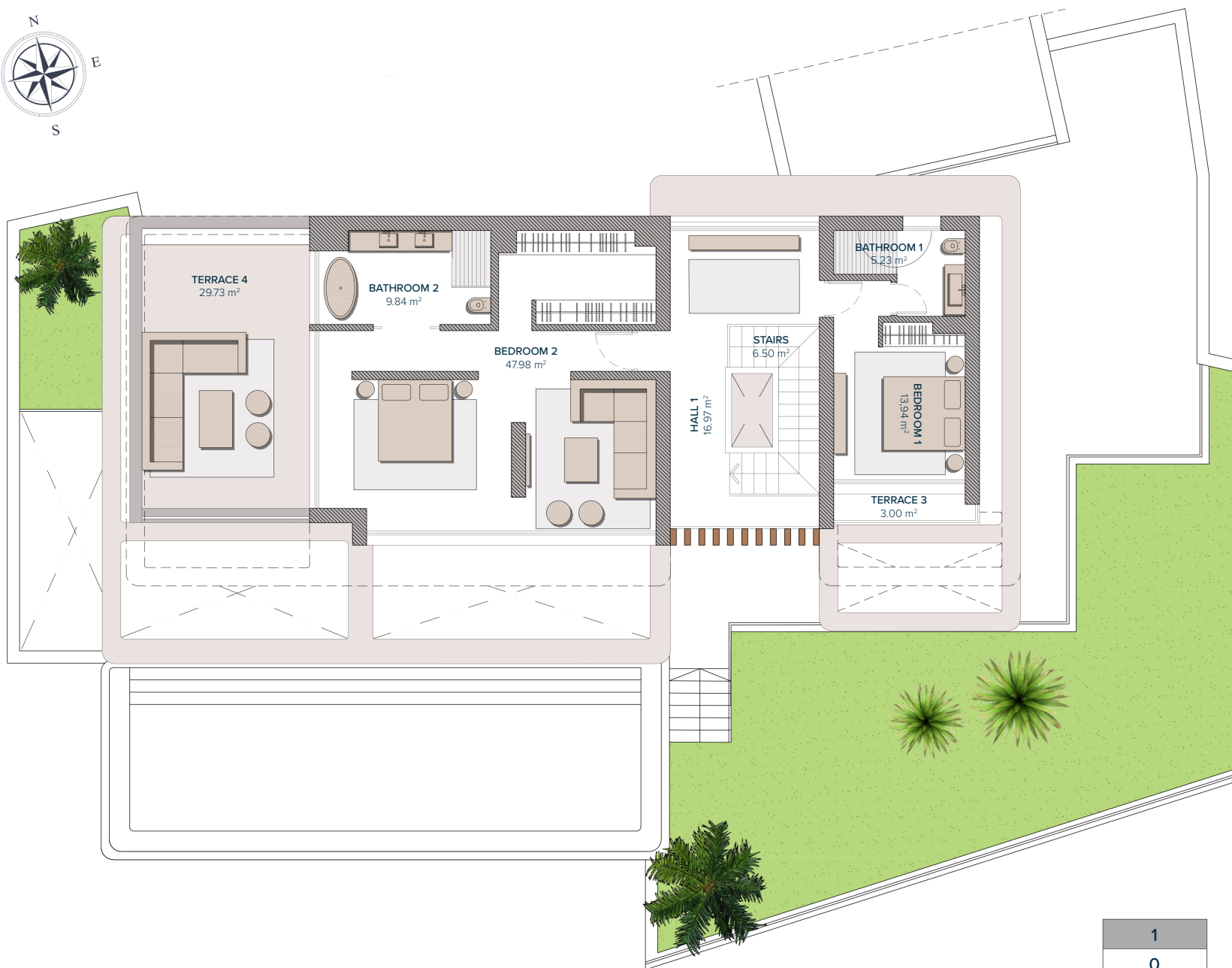
ENTRANCE	16,53 m ²
STAIRS	6,50 m ²
LOUNGE- DINING-KITCHEN	83,71 m ²
BATHROOM 3	5,66 m ²
BEDROOM 3	12,57 m ²
TOTAL	124.97 m²

PORCHE ENTRANCE	3,29 m ²
TERRACE 1	8,52 m ²
TERRACE 2	60,54 m ²
PERGOLA 1	52,29 m ²
PERGOLA 2	11,95 m ²
TOTAL	136,59 m²

Entrance

1
0
-1





FIRST FLOOR

BEDROOMS

HALL 1	16,97 m ²
STAIRS	6,50 m ²
BATHROOM 1	5,23 m ²
BEDROOM 1	13,94 m ²
BATHROOM 2	9,84 m ²
BEDROOM 2	47,98 m ²
TOTAL	100,46 m²

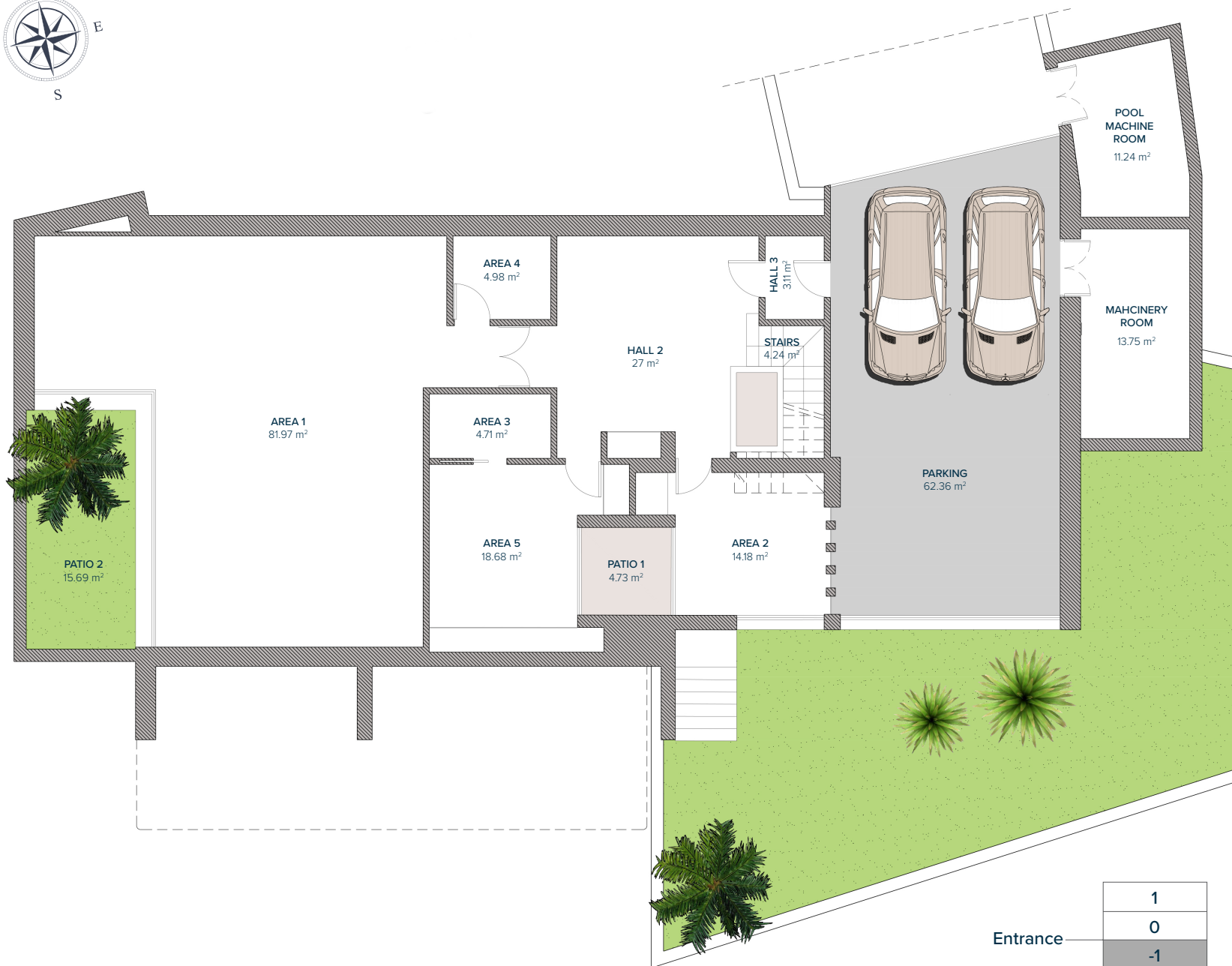
TERRACES

TERRACE 3	3,00 m ²
TERRACE 4	29,73 m ²
TOTAL	32,73 m²

Entrance

1
0
-1





BASEMENT

BASEMENT

HALL 2	27 m ²
STAIRS	4,24 m ²
PATIO	1,80 m ²
PATIO 1	4,73 m ²
PATIO 2	15,69 m ²
AREA 1	81,97 m ²
AREA 2	14,18 m ²
AREA 3	4,71 m ²
AREA 4	4,98 m ²
AREA 5	18,68 m ²
HALL 3	3,11 m ²
PARKING	62,36m ²
POOL MACHINE ROOM	11,24 m ²
MACHINERY ROOM	13,75 m ²
TOTAL	268,44 m²

Entrance	1
	0
	-1

