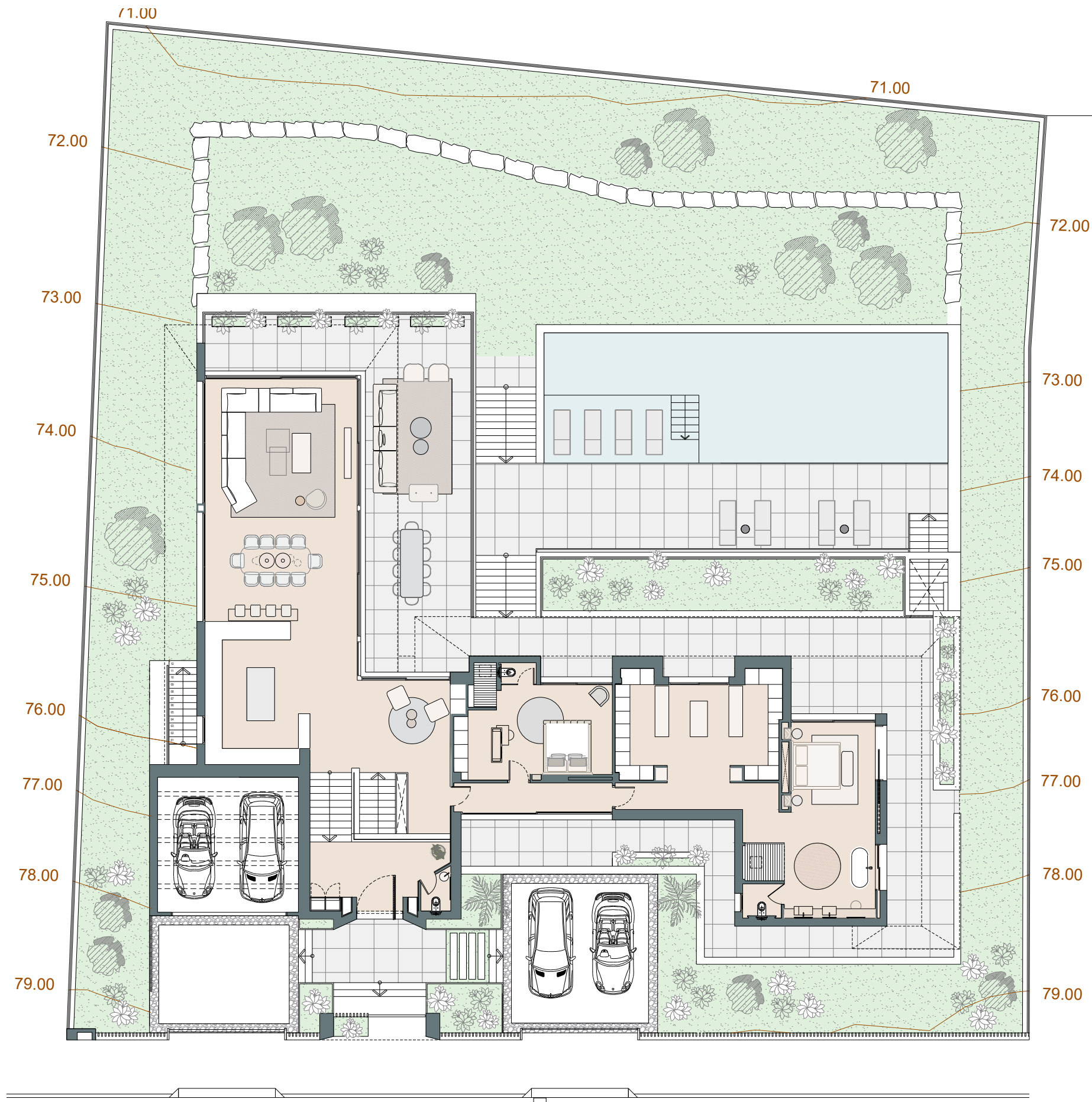




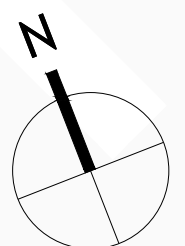


| Site Plan

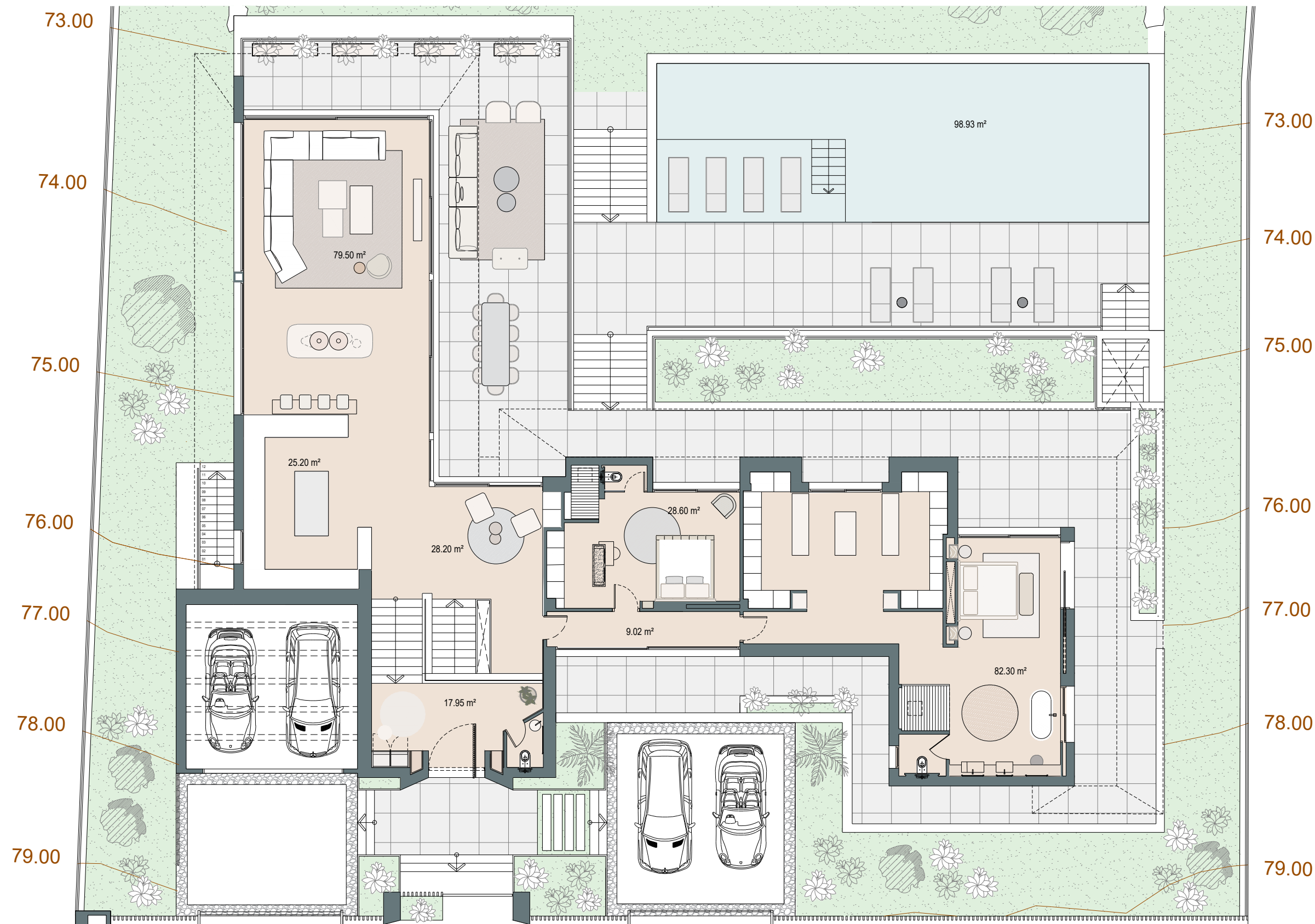


Built closed area	986,92 m ²
Covered terrace	142,50 m ²
Open terrace	288,27 m ²
Open terrace pergola	98,10 m ²
Total terrace	528,87 m ²
Parking pergola	40,71 m ²
Pool	98,93 m ²
Total built area	1.651,43 m ²

   
5 5 1.651,43 m² 4

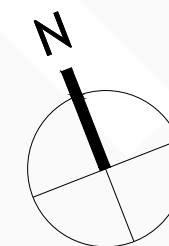


| Ground floor




Built closed area	986,92 m²
Covered terrace	142,50 m²
Open terrace	288,27 m²
Open terrace pergola	98,10 m²
Total terrace	528,87 m²
Parking pergola	40,71 m²
Pool	98,93 m²
Total built area	1.651,43 m²

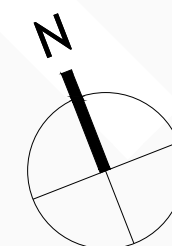
   
5 5 1.651,43 m² 4





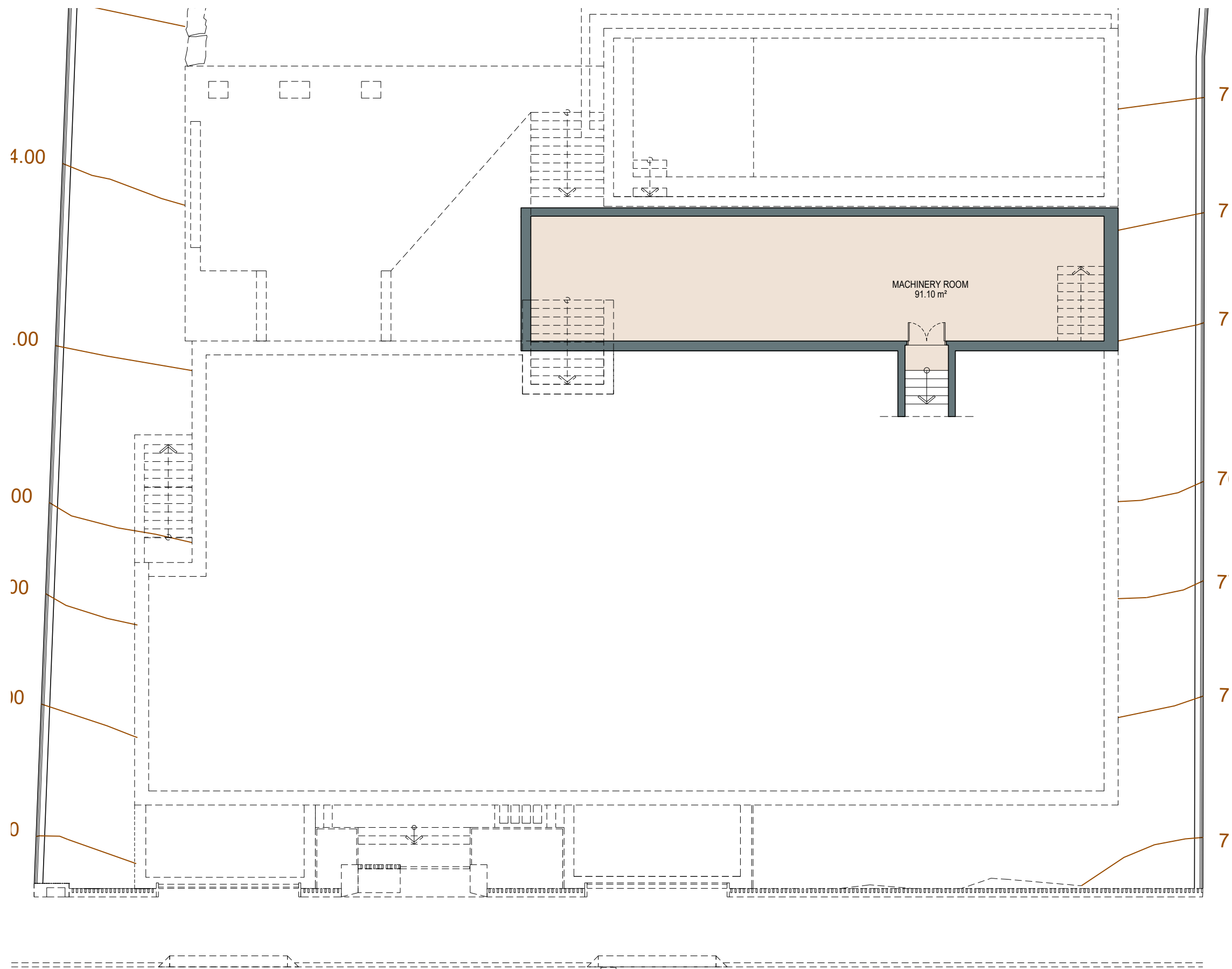
Built closed area	986,92 m ²
Covered terrace	142,50 m ²
Open terrace	288,27 m ²
Open terrace pergola	98,10 m ²
Total terrace	528,87 m ²
Parking pergola	40,71 m ²
Pool	98,93 m ²
Total built area	1.651,43 m ²

 5  5  1.651,43 m²  4





1m 2m 3m 4m 5m
LE 1:150


| Basement -2




Built closed area	986,92 m ²
Covered terrace	142,50 m ²
Open terrace	288,27 m ²
Open terrace pergola	98,10 m ²
Total terrace	528,87 m ²
Parking pergola	40,71 m ²
Pool	98,93 m ²
Total built area	1.651,43 m ²


5


5


1.651,43 m²


4

