
Villa 13

Tipology A2

Bedrooms	Bathrooms	Orientation
4	5+2	E



VILLA 13

PLOT	905,23 m ²
------	-----------------------

BUILT AREA

Living Area	478,24 m ²
Terrace Area	188,61 m ²

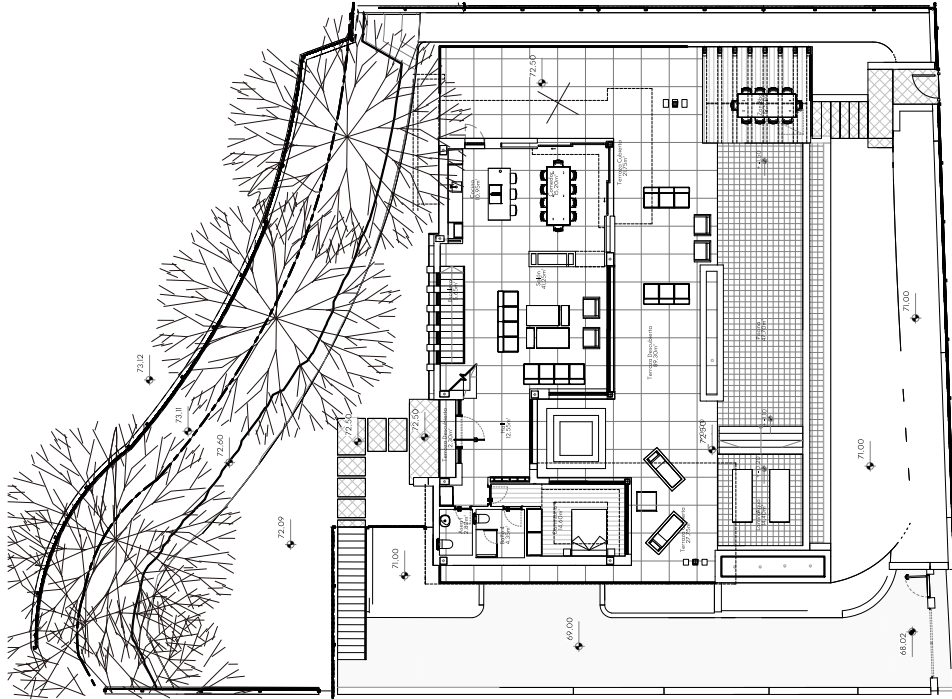
TOTAL BUILT AREA	666,84 m ²
------------------	-----------------------

ACCORDING TO DECRETO 218/2005

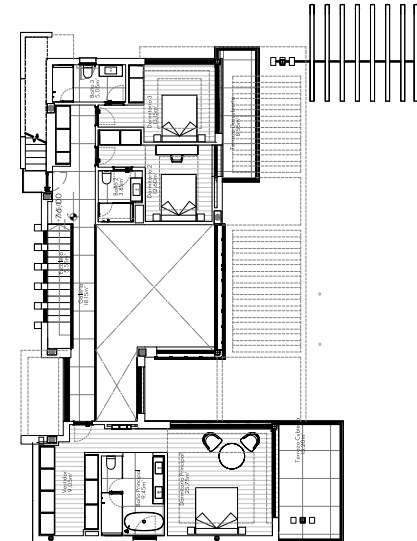
Useful Area	407,44 m ²
Built Area	515,28 m ²



This plan may be modified depending on progress of the development. The furniture shown is purely for decorative purposes. The project manager reserves the right to make the necessary changes for any possible functional, aesthetic and legal reasons, without this negatively affecting the quality of the construction. Illustrative dimensions.



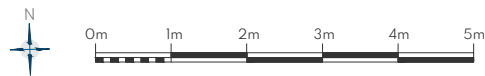
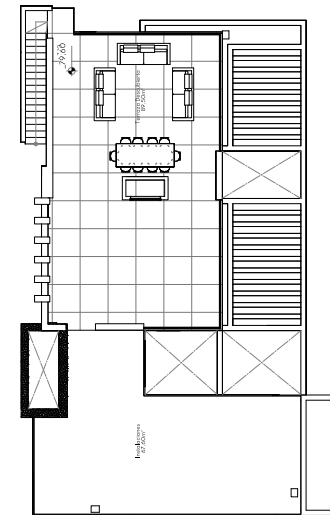
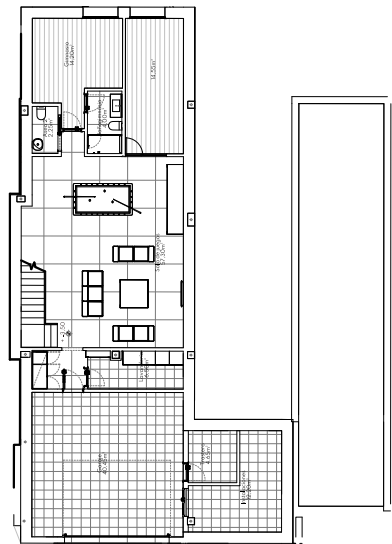
MAIN LEVEL



UPPER LEVEL



This plan may be modified depending on progress of the development. The furniture shown is purely for decorative purposes. The project manager reserves the right to make the necessary changes for any possible functional, aesthetic and legal reasons, without this negatively affecting the quality of the construction. Illustrative dimensions.



This plan may be modified depending on progress of the development. The furniture shown is purely for decorative purposes. The project manager reserves the right to make the necessary changes for any possible functional, aesthetic and legal reasons, without this negatively affecting the quality of the construction. Illustrative dimensions.