
Villa 23

Tipology B4

Bedrooms
5

Bathrooms
5+1

Orientation
E

PRICE ON REQUEST



VILLA 23

PLOT	928,77 m ²
------	-----------------------

BUILT AREA

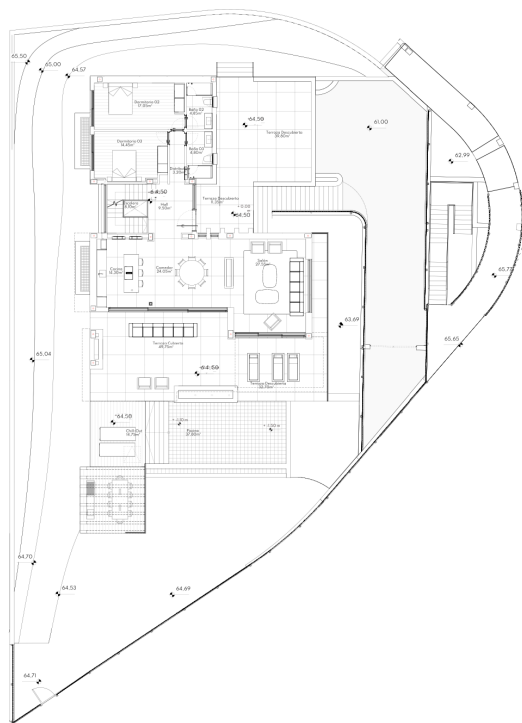
Living Area	488,25 m ²
Terrace Area	355,15 m ²

ACCORDING TO DECRETO 218/2005

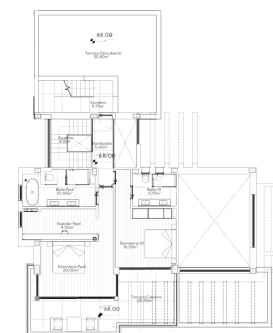
Useful Area	435,11 m ²
Built Area	546,33 m ²



This plan may be modified depending on progress of the development. The furniture shown is purely for decorative purposes. The project manager reserves the right to make the necessary changes for any possible functional, aesthetic and legal reasons, without this negatively affecting the quality of the construction. Illustrative dimensions.



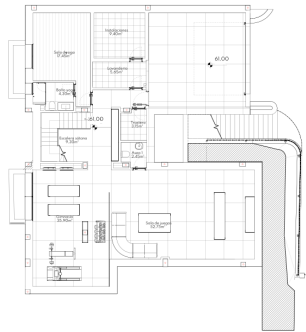
MAIN LEVEL



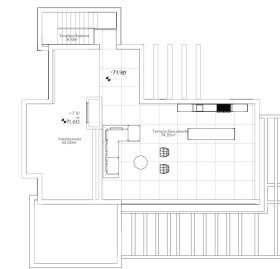
UPPER LEVEL



This plan may be modified depending on progress of the development. The furniture shown is purely for decorative purposes. The project manager reserves the right to make the necessary changes for any possible functional, aesthetic and legal reasons, without this negatively affecting the quality of the construction. Illustrative dimensions.



LOWER LEVEL



SOLARIUM



This plan may be modified depending on progress of the development. The furniture shown is purely for decorative purposes. The project manager reserves the right to make the necessary changes for any possible functional, aesthetic and legal reasons, without this negatively affecting the quality of the construction. Illustrative dimensions.