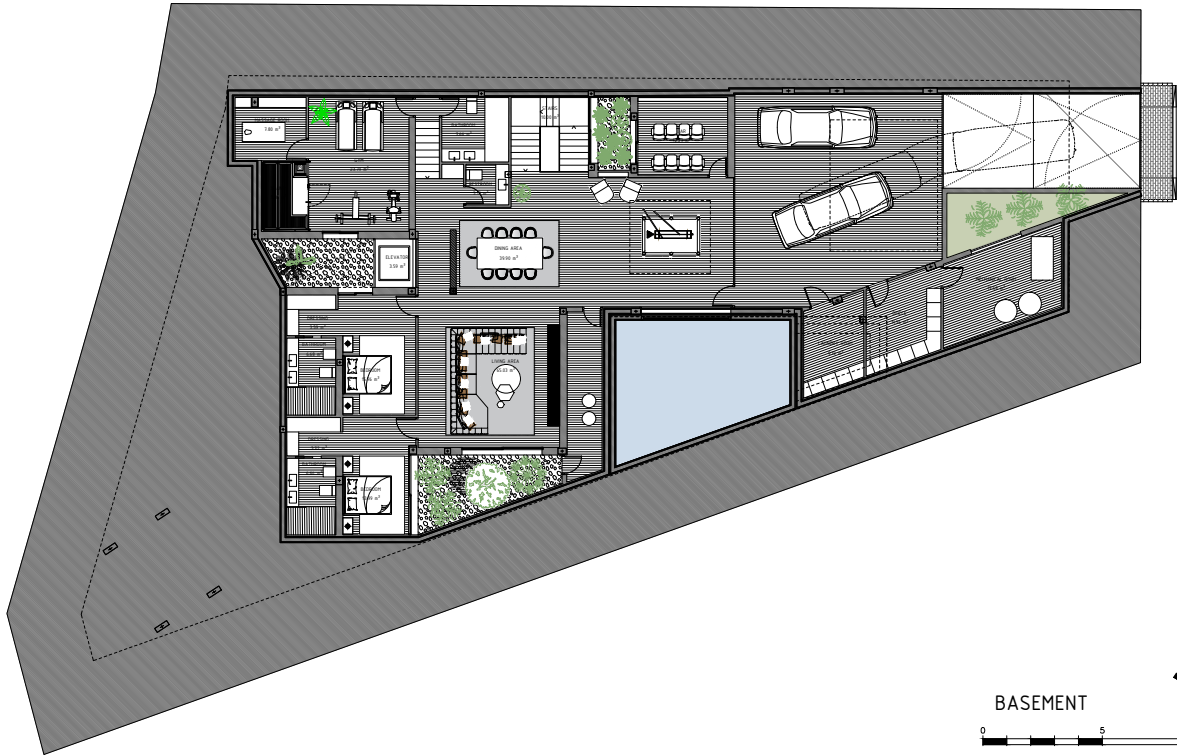
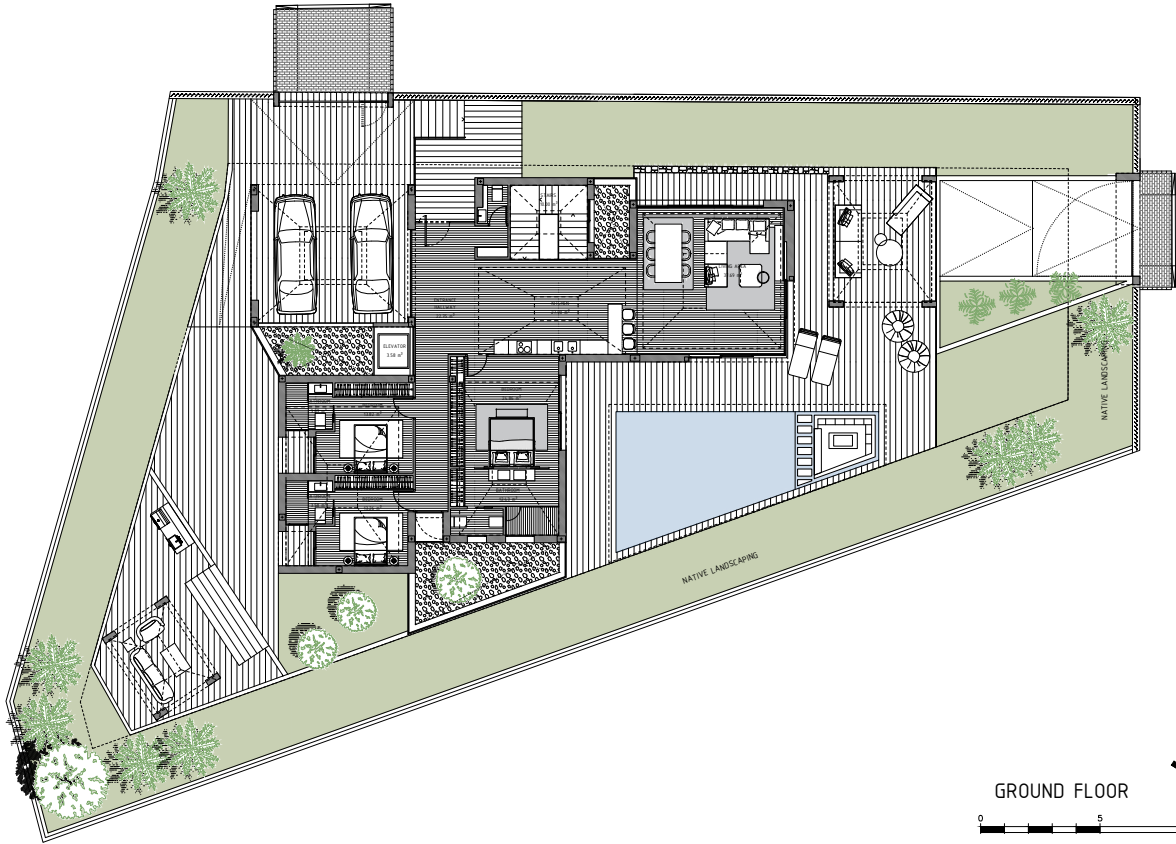


Tipology 1

Bedrooms	Bathrooms	Orientation
5	6+2	N/E





GROUND FLOOR



PLOT 1014,36 m²

BUILT AREA

Living Area 534,64 m²

Terrace Area 296,29 m²

TOTAL BUILT AREA 830,93 m²

ACCORDING TO DECRETO 218/2005

Useful Area 534,64 m²

Built Area 650,17 m²
