

## Detached Villa Type 2

Plot 800 m<sup>2</sup>

Detached villa in one floor

4 bedrooms and 3 bathrooms

---

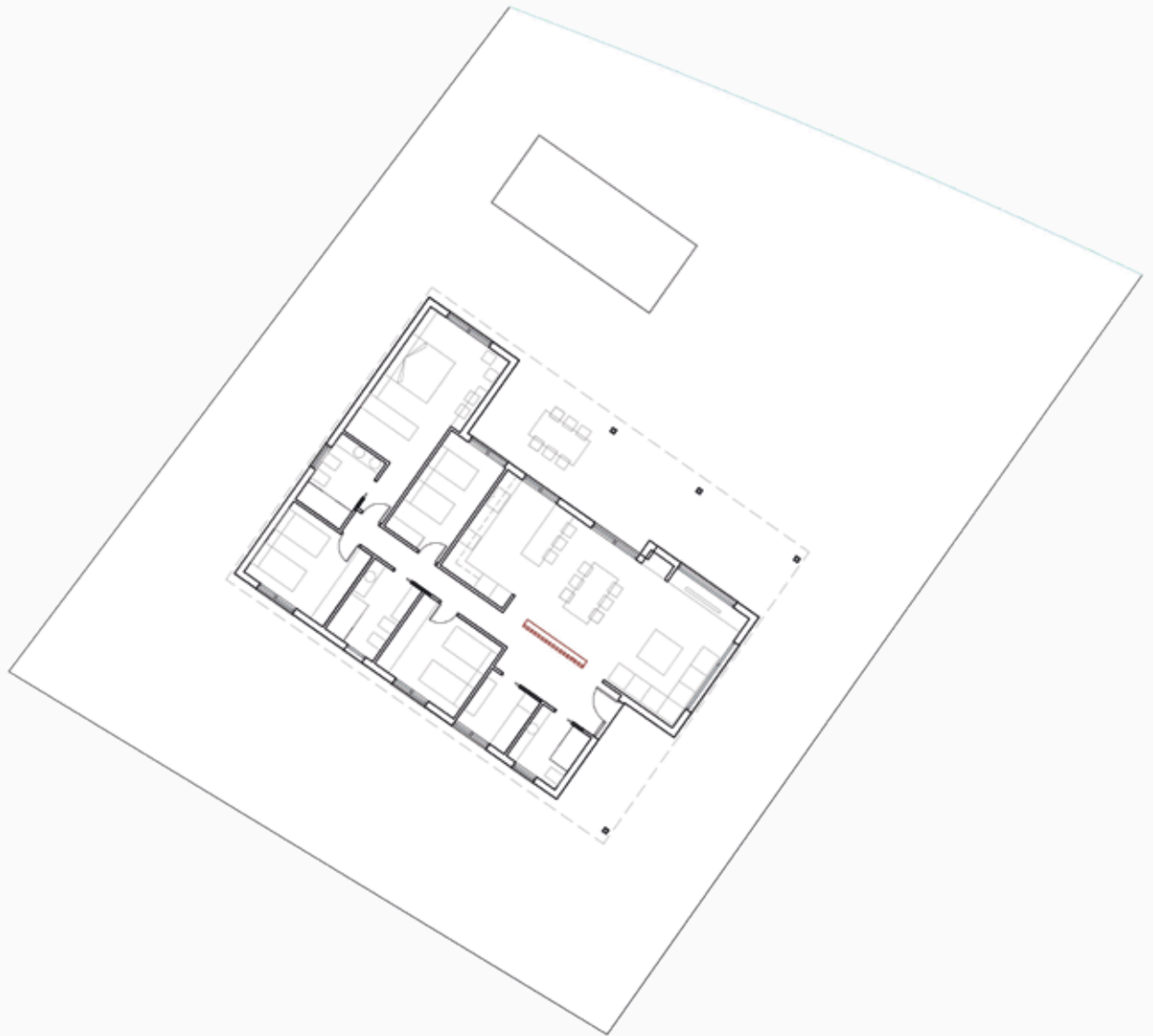
Built area 155,60 m<sup>2</sup>

Built area Terraces 54,01 m<sup>2</sup>

Total built area 209,61 m<sup>2</sup>

Usable area 136,02 m<sup>2</sup>

Total usable area 190,03 m<sup>2</sup>



## Detached Villa Type 2

