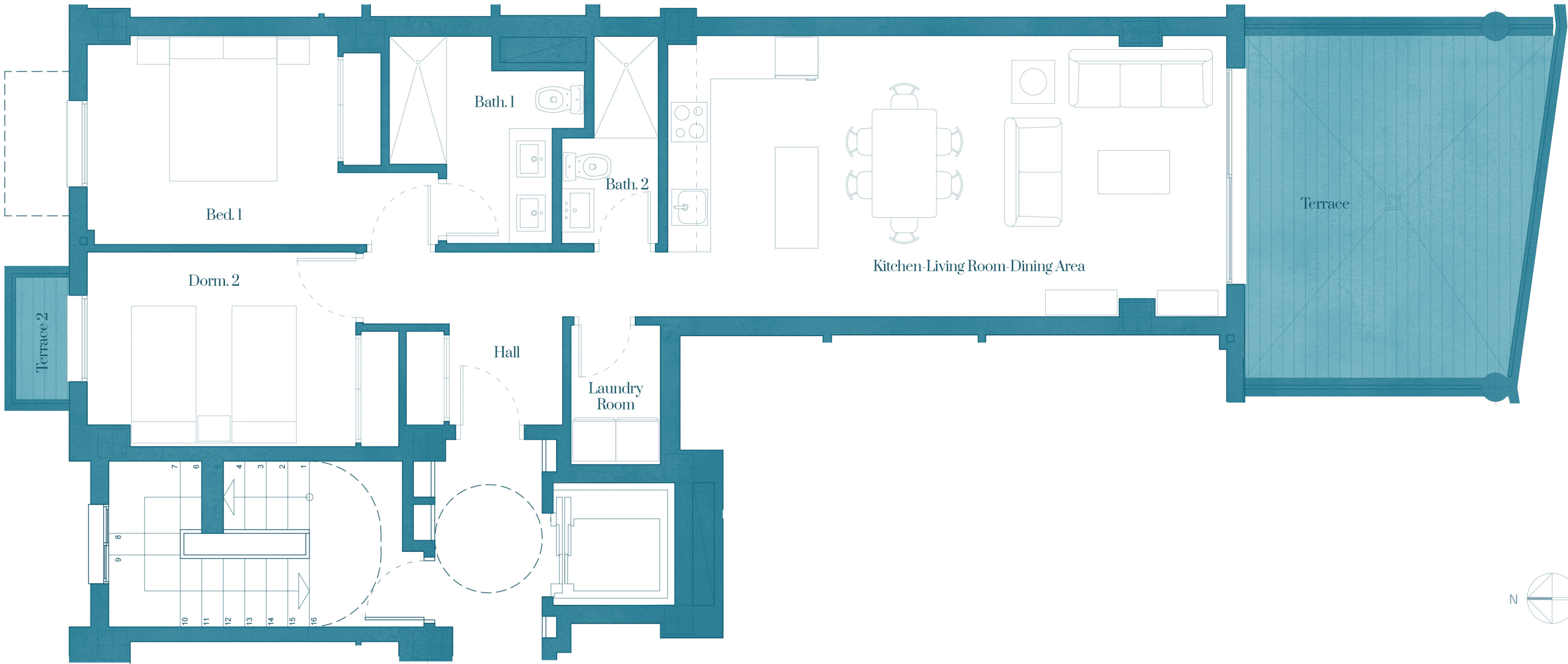


Type 3'

Floors 1 & 3



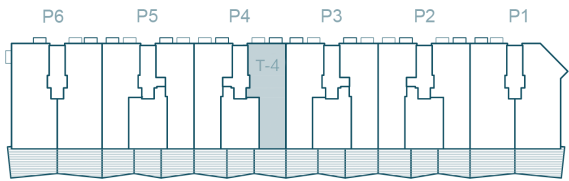
Note: terrace 2 is located in bedroom 2 on floors 1 and 3

Surfaces

Hall	6,98 m ²	Bathroom 2	3,24 m ²
Kitchen-Living R.-Dining A.	30,32 m ²	Terrace 1 (covered)	18,96 m ²
Laundry Room	2,42 m ²	Terrace 2 (outdoor)	1,27 m ²
Bedroom 1	12,46 m ²		
Bedroom 2	10,90 m ²		
Bathroom 1	5,61 m ²		

TOTAL INSIDE	71,81 m ²
TOTAL CONSTRUCTED	101,72 m ²
TOTAL CONST. TERRACE	22,55 m ²

Distribution



PLANTA 1º, 2º, 3º, 4º

