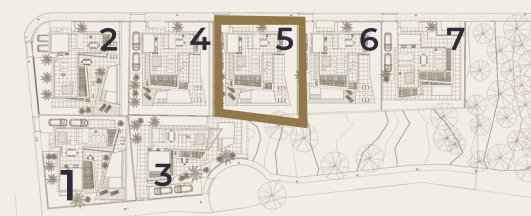


# Villa 5

Plot area  
499,19 m<sup>2</sup>

4-5  
 5  
 2  
 30,44 m<sup>2</sup>



## Total

Plot	499,19 m <sup>2</sup>
Closed Built surface	334,73 m <sup>2</sup>
Garden Area	2 04,05 m <sup>2</sup>
Covered terrace surface	44,75 m <sup>2</sup>
Uncovered terrace surface	94,82 m <sup>2</sup>

**Total Build area 629,59 m<sup>2</sup>**

## Ground floor

	Useful area:	Build area:
Closed surface	82,93 m <sup>2</sup>	101,11 m <sup>2</sup>
Covered terrace	35,17 m <sup>2</sup>	44,75 m <sup>2</sup>
Outdoor terrace	78,05 m <sup>2</sup>	92,67 m <sup>2</sup>

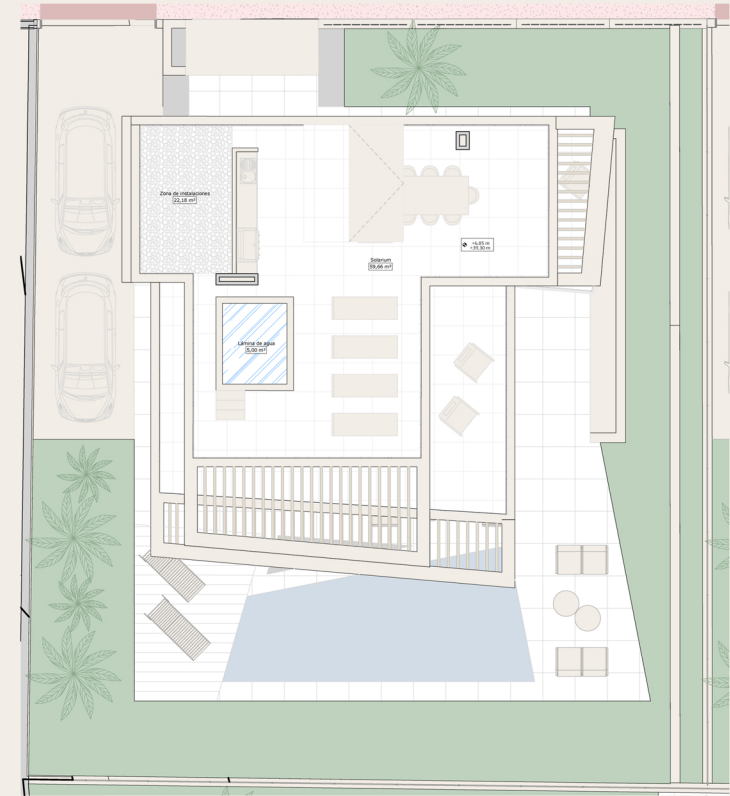
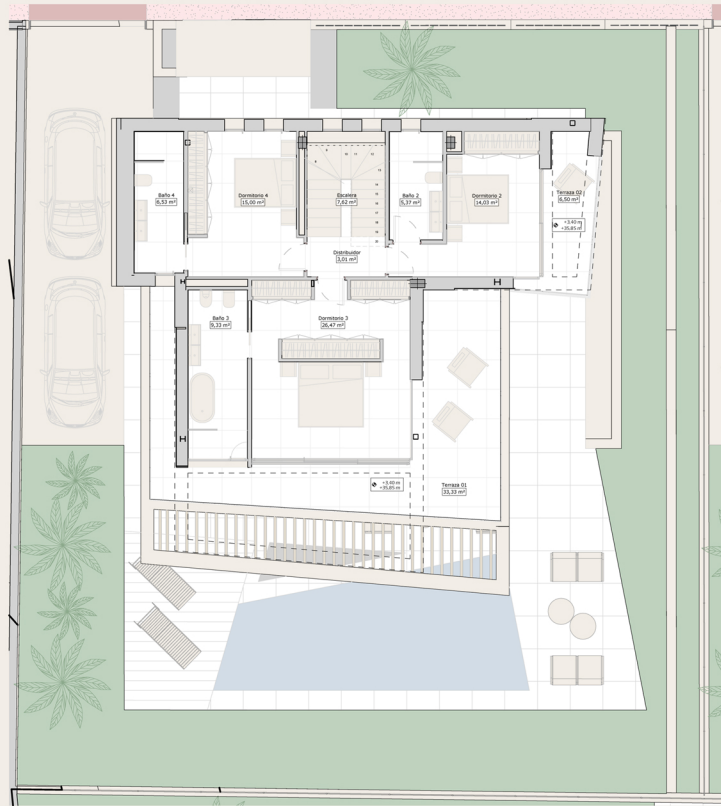
**Total area 196,15 m<sup>2</sup> 238,53 m<sup>2</sup>**

## Basement

	Useful area:	Build area:
Closed surface	99,89 m <sup>2</sup>	121,99 m <sup>2</sup>
Outdoor terrace	7,29 m <sup>2</sup>	10,69 m <sup>2</sup>

**Total area 107,18 m<sup>2</sup> 132,68 m<sup>2</sup>**

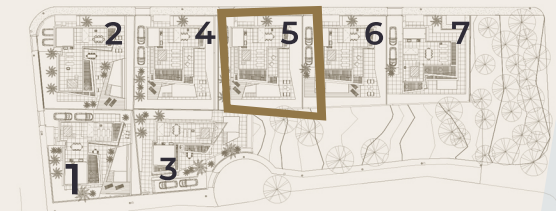
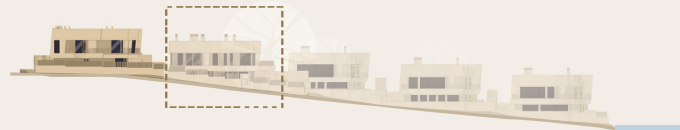




# Villa 5

Plot area  
499,19 m<sup>2</sup>

4-5   
 5   
 2   
 30,44 m<sup>2</sup>



## Total

Plot	499,19 m <sup>2</sup>
Closed Built surface	334,73 m <sup>2</sup>
Garden Area	2 04,05 m <sup>2</sup>
Covered terrace surface	44,75 m <sup>2</sup>
Uncovered terrace surface	94,82 m <sup>2</sup>

**Total Build area 629,59 m<sup>2</sup>**

## First Floor

	Useful area:	Build area:
Closed surface	87,37 m <sup>2</sup>	111,63 m <sup>2</sup>
Outdoor terrace	39,82 m <sup>2</sup>	45,85 m <sup>2</sup>
<b>Total area</b>	<b>127,19 m<sup>2</sup></b>	<b>157,48 m<sup>2</sup></b>

## Solarium

	Useful area:	Build area:
Uncovered terrace	79,02 m <sup>2</sup>	94,82 m <sup>2</sup>
<b>Total area</b>	<b>79,02 m<sup>2</sup></b>	<b>94,82 m<sup>2</sup></b>

