

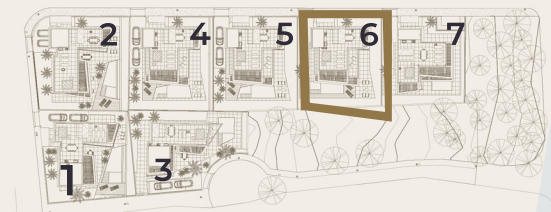
Villa 6

Plot area
483,76 m²

4-5 beds, 4 bathrooms

2 parking spaces

30,44 m² swimming pool



Total

Plot	483,76 m ²
Closed Built surface	334,73 m ²
Garden Area	178,12 m ²
Covered terrace surface	44,75 m ²
Uncovered terrace surface	106,94 m ²

Total Build area 649,37 m²

Ground floor

	Useful area:	Build area:
Closed surface	82,93 m ²	101,11 m ²
Covered terrace	35,17 m ²	44,75 m ²
Outdoor terrace	78,05 m ²	92,67 m ²

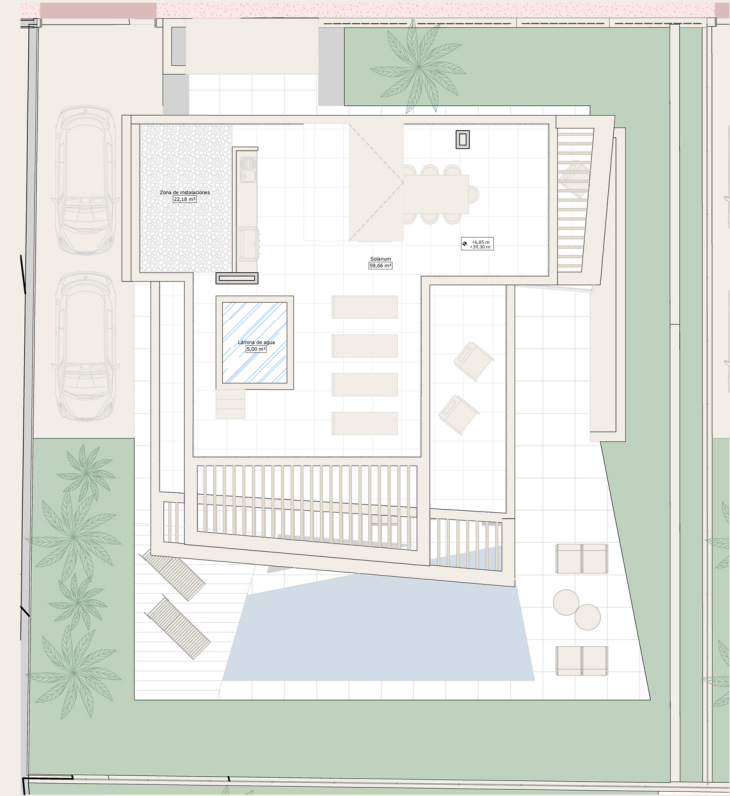
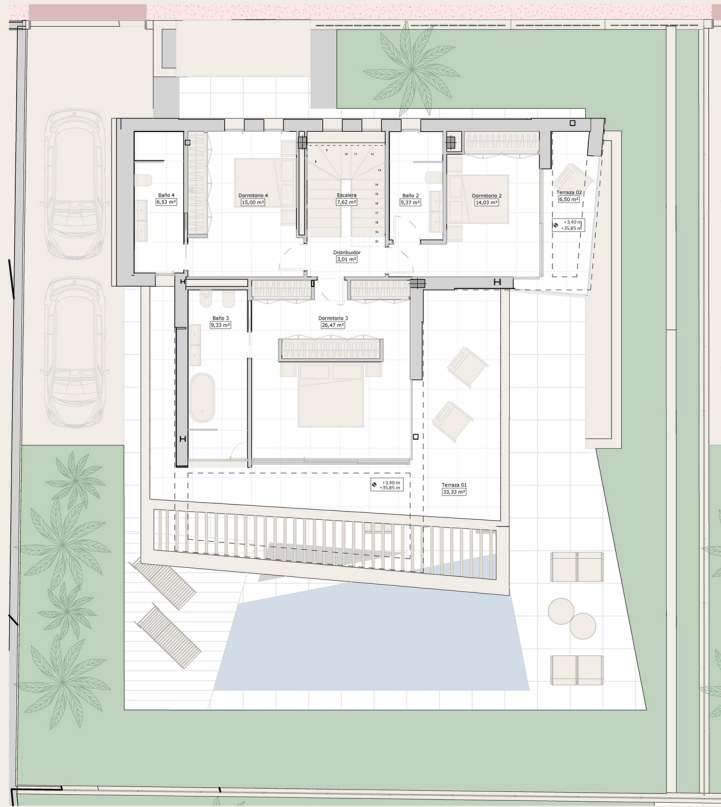
Total area 196,15 m² 238,53 m²

Basement

	Useful area:	Build area:
Closed surface	99,89 m ²	121,99 m ²
Outdoor terrace	7,29 m ²	10,69 m ²

Total area 107,18 m² 132,68 m²

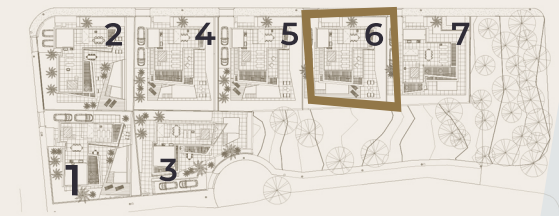
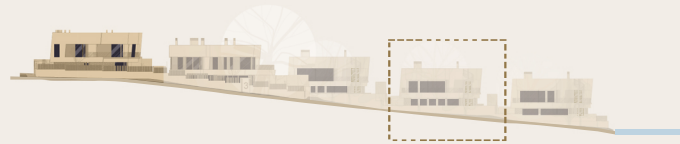




Villa 6

Plot area
483,76 m²

 4 -5
  4
  2
  30,44 m²



Total

Plot	483,76 m ²
Closed Built surface	334,73 m ²
Garden Area	178,12 m ²
Covered terrace surface	44,75 m ²
Uncovered terrace surface	106,94 m ²

Total Build area 649,37 m²

First Floor

	Useful area:	Build area:
Closed surface	87,37 m ²	111,63 m ²
Outdoor terrace	39,82 m ²	45,85 m ²
Total area	127,19 m²	157,48 m²

Solarium

	Useful area:	Build area:
Uncovered terrace	79,02 m ²	106,94 m ²
Total area	79,02 m²	106,94 m²

