

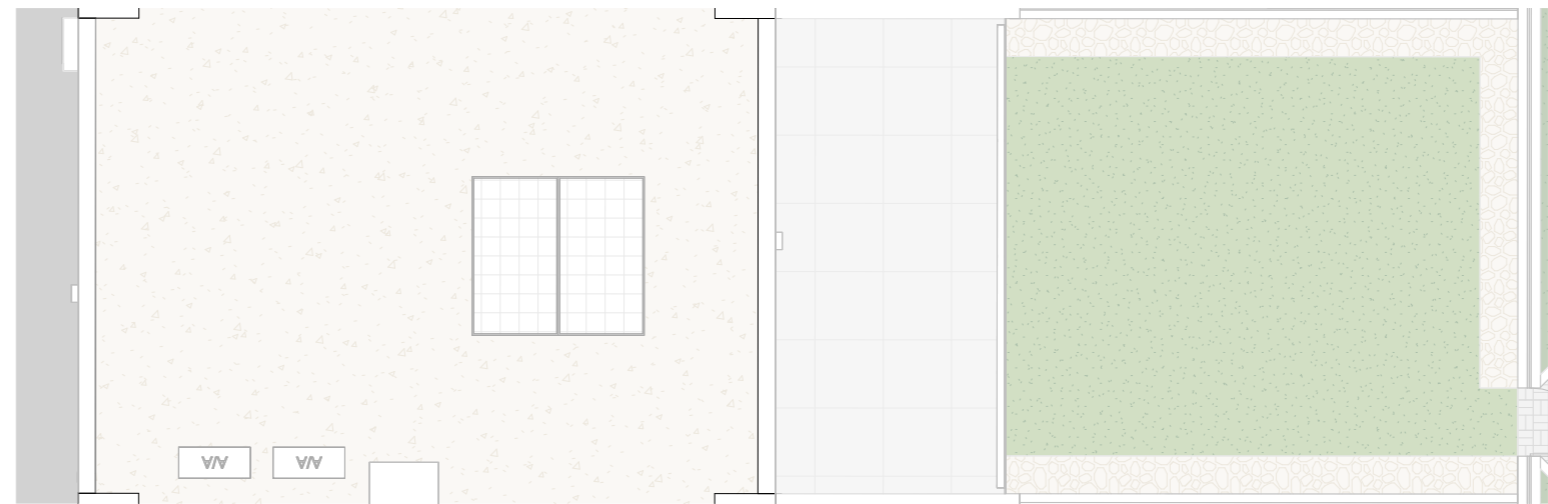
VIVIENDA 20

| | |
|--------------------------|-----------------------|
| SUP. ÚTIL VIVIENDA | 150.19 m ² |
| SUP. CONSTRUIDA VIVIENDA | 176.06 m ² |
| SUP. ÚTIL TOTAL | 230.40 m ² |

SUPERFICIES ÚTILES VIVIENDA

| INTERIOR | | |
|----------|-----------------|--------|
| 1 | DORMITORIO 1 | 12.94 |
| 2 | DORMITORIO 2 | 10.98 |
| 3 | DORMITORIO 3 | 10.04 |
| 4 | BAÑO 1 | 5.62 |
| 5 | BAÑO 2 | 3.96 |
| 6 | DISTRIBUIDOR PB | 3.54 |
| 7 | SALÓN-COMEDOR | 28.79 |
| 8 | COCINA | 10.57 |
| 9 | ESCALERA PB | 4.78 |
| 10 | DISTRIBUIDOR P1 | 2.41 |
| 11 | ASEO | 2.54 |
| 12 | LAVADERO | 2.36 |
| 13 | BODEGA | 42 |
| 14 | BAÑO 3 | 5 |
| 15 | ESCALERA PS | 4.66 |
| | | 150.19 |

| EXTERIOR | | |
|----------|---------------------|-------|
| 17 | TERRAZA DESCUBIERTA | 18.93 |
| 18 | JARDÍN PRIVATIVO | 42.35 |
| 21 | TERRAZA DESCUBIERTA | 18.93 |
| | | 80.21 |



PLANTA CUBIERTA



PLANTA PRIMERA

