

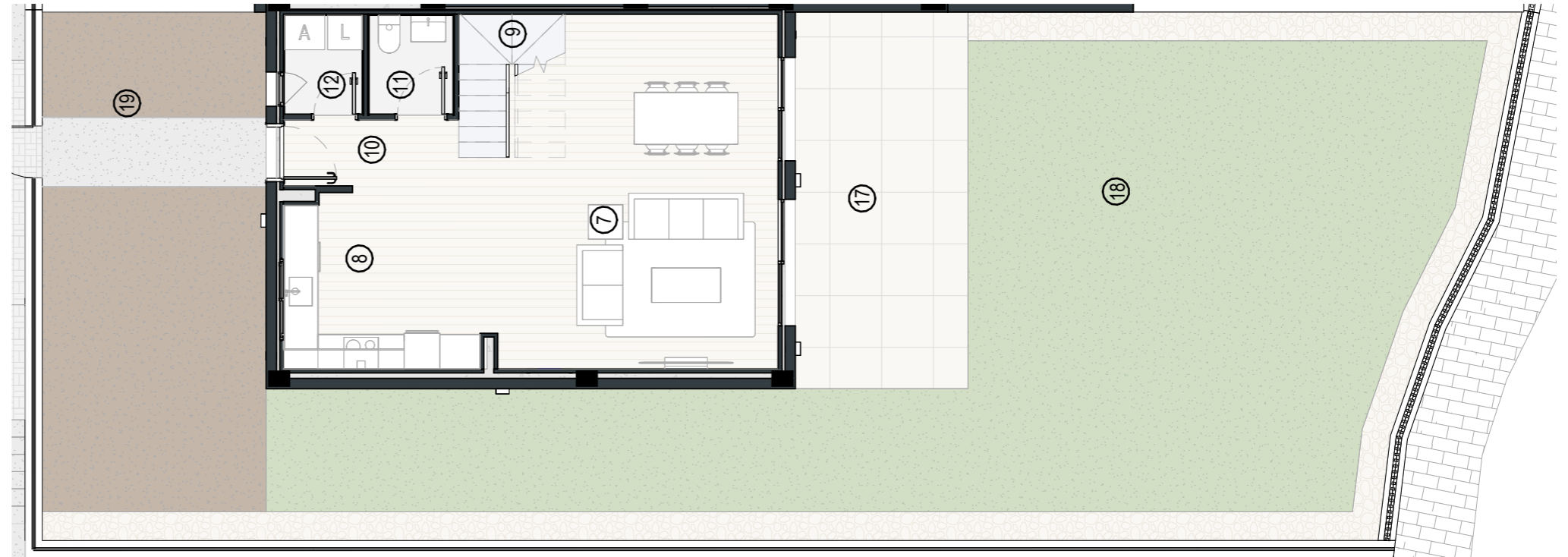
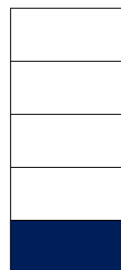
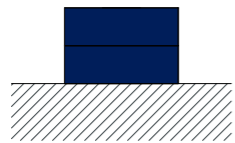
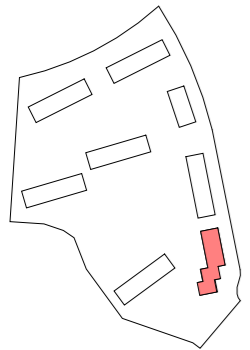
VIVIENDA 33

SUP. ÚTIL VIVIENDA	98.53 m ²
SUP. CONSTRUIDA VIVIENDA	117.20 m ²
SUP. ÚTIL TOTAL	263.16 m ²

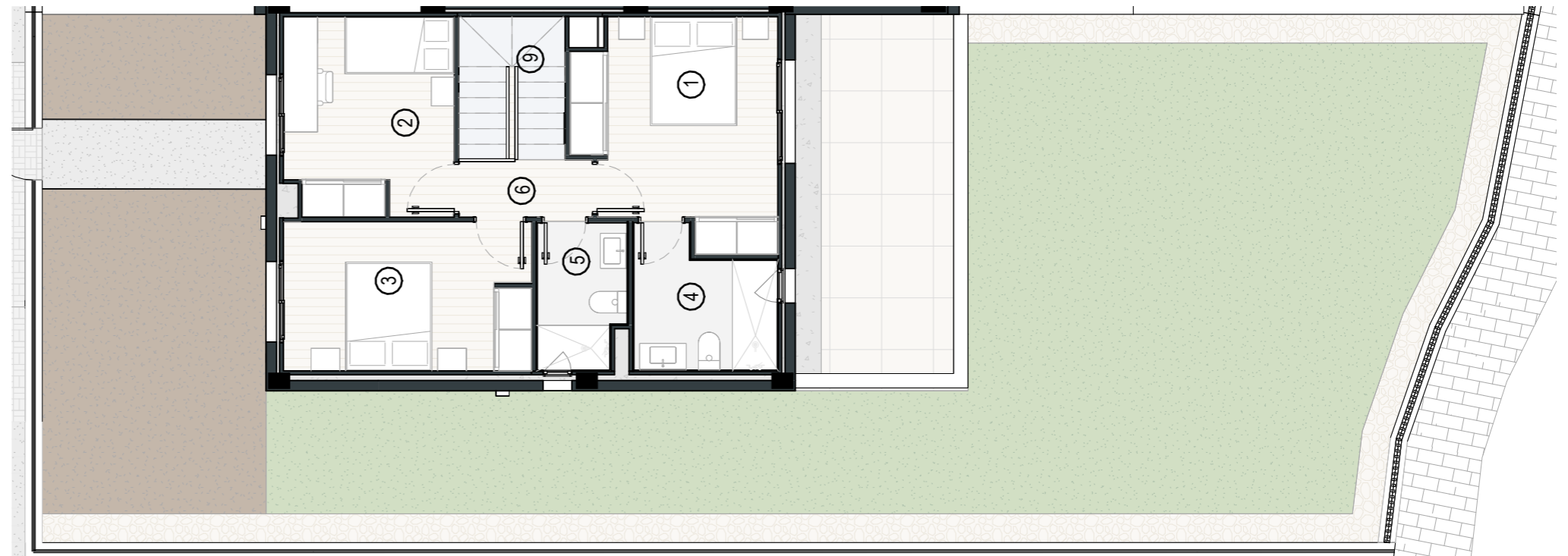
SUPERFICIES ÚTILES VIVIENDA

INTERIOR		
1	DORMITORIO 1	12.94
2	DORMITORIO 2	10.04
3	DORMITORIO 3	10.98
4	BAÑO 1	5.62
5	BAÑO 2	3.96
6	DISTRIBUIDOR	3.54
7	SALÓN-COMEDOR	28.79
8	COCINA	10.57
9	ESCALERA	4.78
10	DISTRIBUIDOR P1	2.41
11	ASEO	2.54
12	LAVADERO	2.36
		98.53

EXTERIOR		
17	TERRAZA DESCUBIERTA	19.65
18	JARDÍN PRIVATIVO	109.21
19	ACESSO PEATONAL	35.77
		164.63



PLANTA BAJA



PLANTA PRIMERA