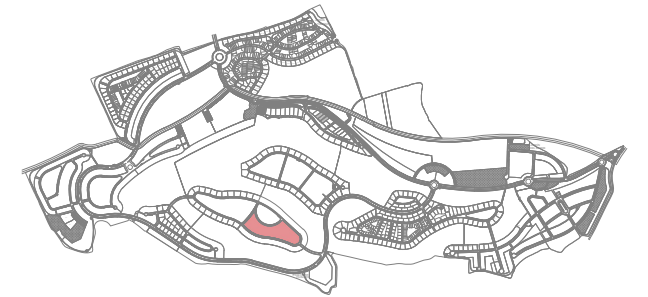
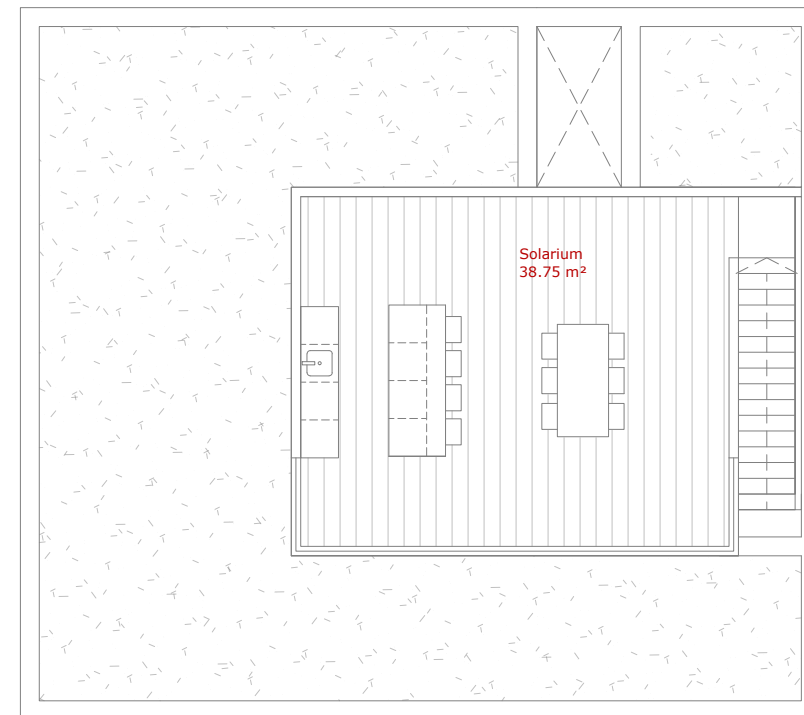
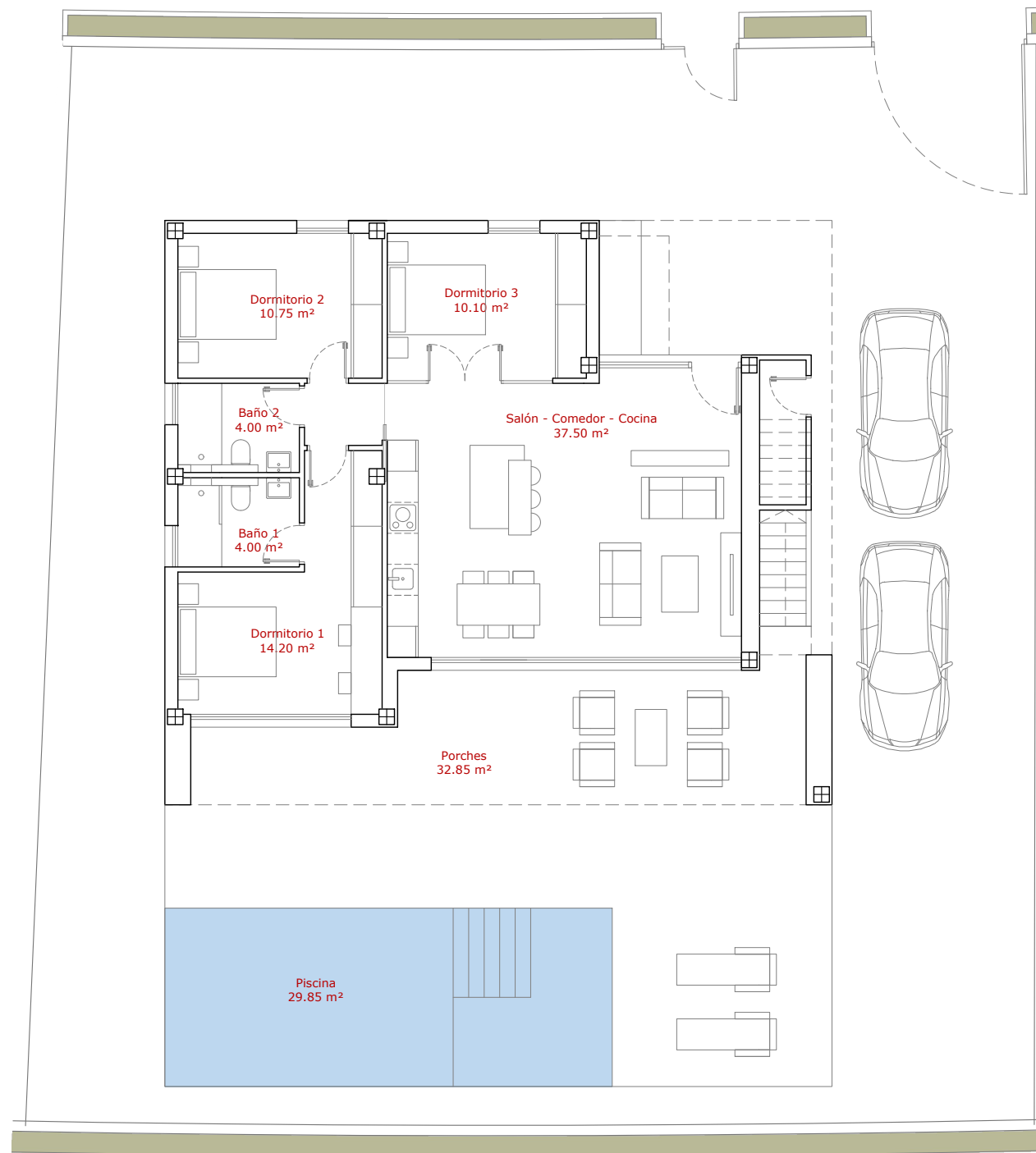
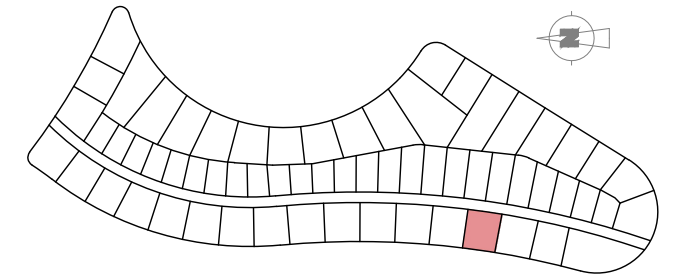


PARCELA P36 - MELISSA - VIVIENDA 4

Situación



Situación



Superficies útiles	M ²
Salón-Comedor-Cocina	37.50 m ²
Dormitorio 1	14.20 m ²
Dormitorio 2	10.75 m ²
Dormitorio 3	10.10 m ²
Baño 1	4.00 m ²
Baño 2	4.00 m ²
Total Sup. Útil	80.55 m²
Porches	32.85 m ²
Solarium	38.75 m ²
Piscina	30.80 m ²

Superficies Construidas	M ²
Vivienda PB 100%	95.00 m ²
Porche PB 50%	16.43 m ²
Total Sup. Construida Viv.	111.43 m²

Sup. Parcela	423.54 m²
---------------------	-----------------------------

