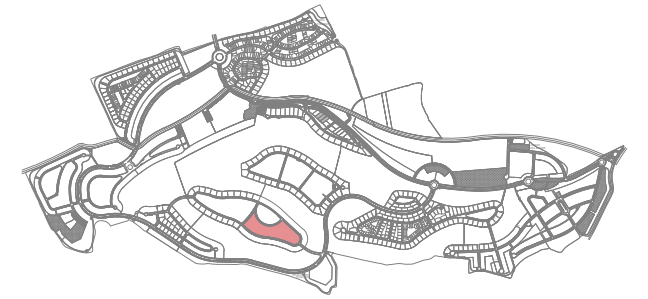
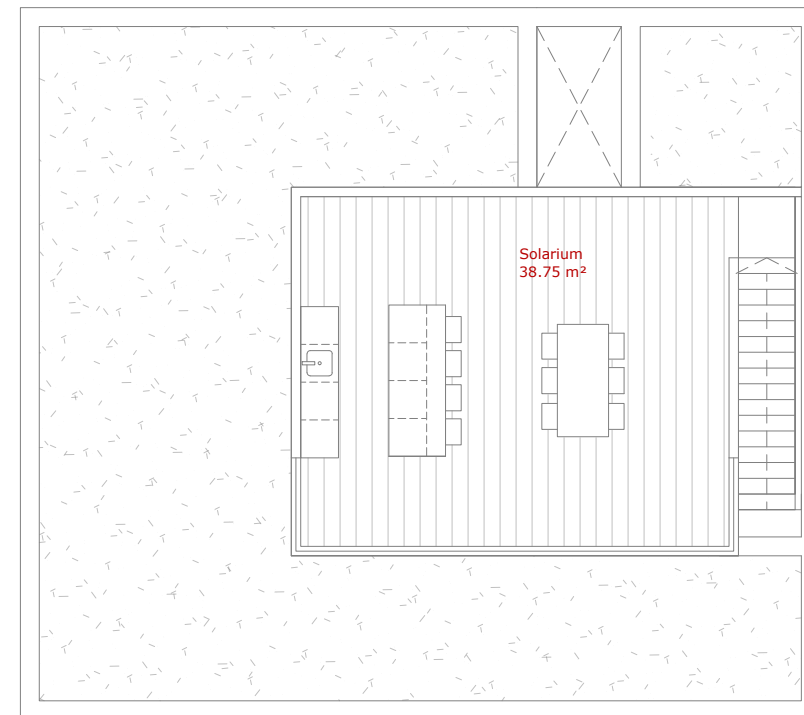
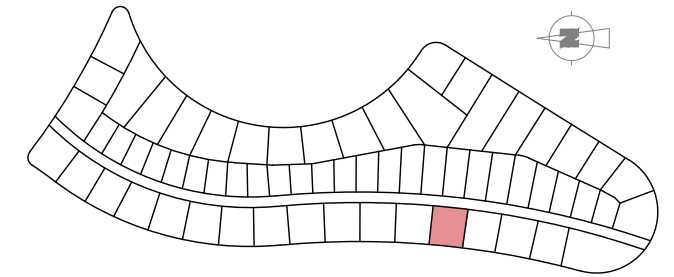


# PARCELA P36 - MELISSA - VIVIENDA 5

## Situación



## Situación



Superficies útiles	M <sup>2</sup>
Salón-Comedor-Cocina	37.50 m <sup>2</sup>
Dormitorio 1	14.20 m <sup>2</sup>
Dormitorio 2	10.75 m <sup>2</sup>
Dormitorio 3	10.10 m <sup>2</sup>
Baño 1	4.00 m <sup>2</sup>
Baño 2	4.00 m <sup>2</sup>
<b>Total Sup. Útil</b>	<b>80.55 m<sup>2</sup></b>
Porches	32.85 m <sup>2</sup>
Solarium	38.75 m <sup>2</sup>
Piscina	30.80 m <sup>2</sup>

Superficies Construidas	M <sup>2</sup>
Vivienda PB 100%	95.00 m <sup>2</sup>
Porche PB 50%	16.43 m <sup>2</sup>
<b>Total Sup. Construida Viv.</b>	<b>111.43 m<sup>2</sup></b>

**Sup. Parcela 434.76 m<sup>2</sup>**

