

# VILLAS GARBI, BORA & BRISA

4

4.5

Bedrooms  
1041 - 1045 m<sup>2</sup>

Bathrooms  
358.52 m<sup>2</sup>

Plot

61.92 m<sup>2</sup>

Build Area

52.61 m<sup>2</sup>

Covered terraces

130.22 m<sup>2</sup>

Garage

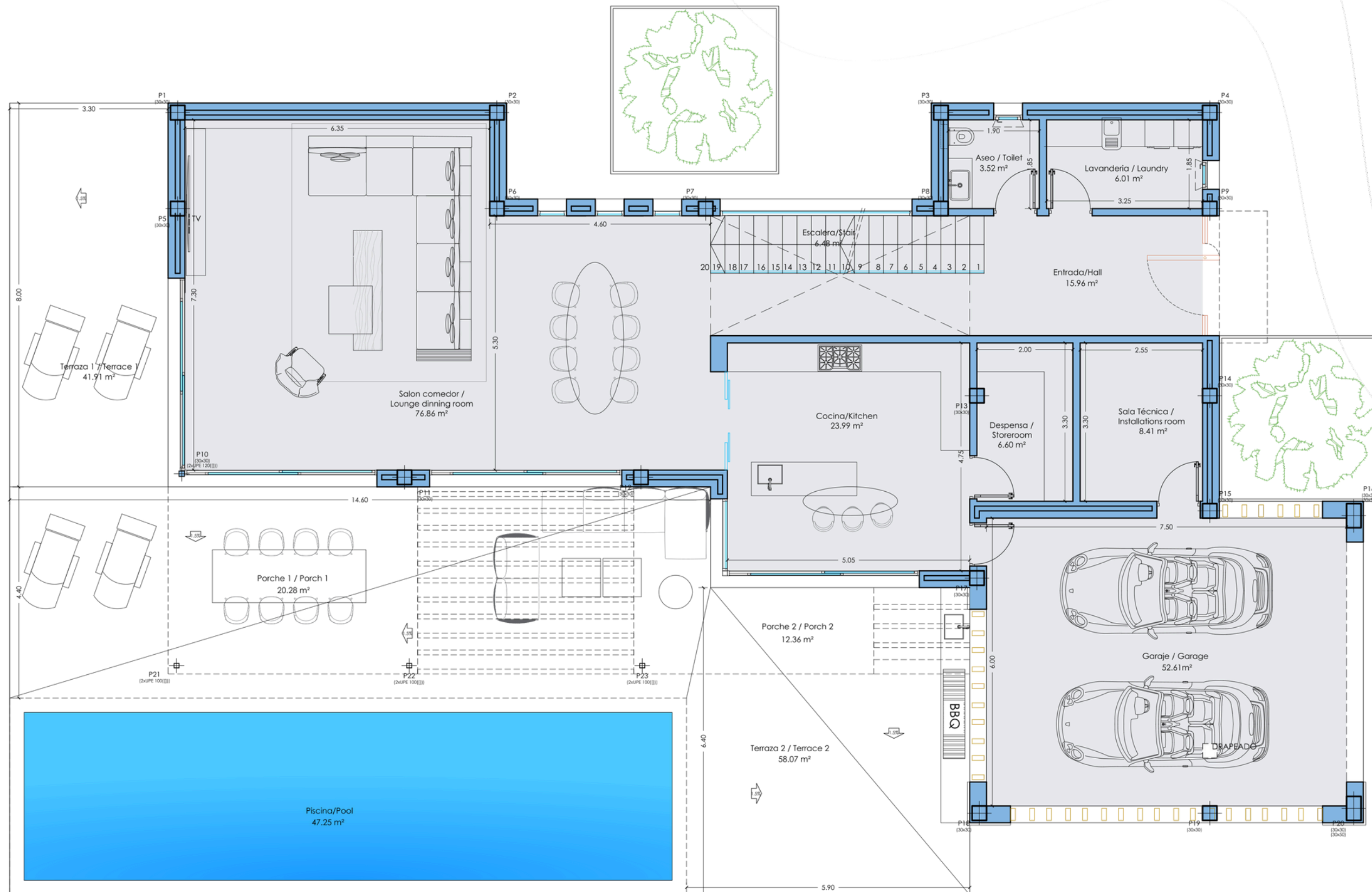
47.25 m<sup>2</sup>

Open terraces

603.27 m<sup>2</sup>

**Pool size**

Total



# VILLAS GARBI, BORA & BRISA

4

4.5

Bedrooms  
1041 - 1045 m<sup>2</sup>

Bathrooms  
358.52 m<sup>2</sup>

Plot

61.92 m<sup>2</sup>

Build Area

52.61 m<sup>2</sup>

Covered terraces

130.22 m<sup>2</sup>

Garage

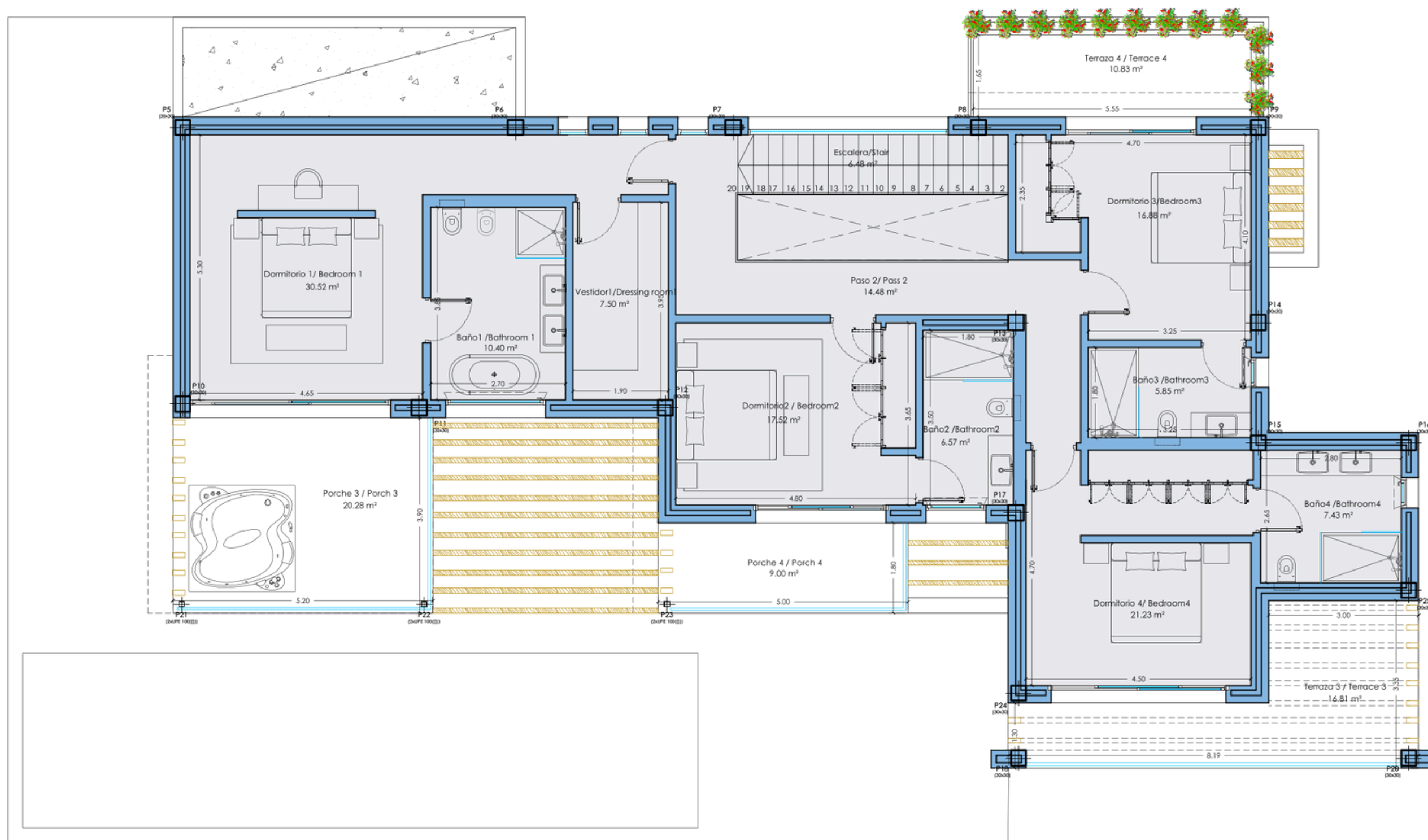
47.25 m<sup>2</sup>

Open terraces

603.27 m<sup>2</sup>

**Pool size**

Total



VILLAS  
**GARBI, BORA  
& BRISA**

4

4.5

Bedrooms  
1041 - 1045 m<sup>2</sup>

Bathrooms  
358.52 m<sup>2</sup>

Plot

61.92 m<sup>2</sup>

Build Area

52.61 m<sup>2</sup>

Covered terraces

130.22 m<sup>2</sup>

Garage

47.25 m<sup>2</sup>

Open terraces

603.27 m<sup>2</sup>

**Pool size**

Total



VILLAS  
**GARBI, BORA  
& BRISA**

4

4.5

Bedrooms  
1041 - 1045 m<sup>2</sup>

Bathrooms  
358.52 m<sup>2</sup>

Plot

61.92 m<sup>2</sup>

Build Area

52.61 m<sup>2</sup>

Covered terraces

130.22 m<sup>2</sup>

Garage

47.25 m<sup>2</sup>

Open terraces

603.27 m<sup>2</sup>

**Pool size**

Total

1<sup>st</sup>  
FLOOR PLAN

