

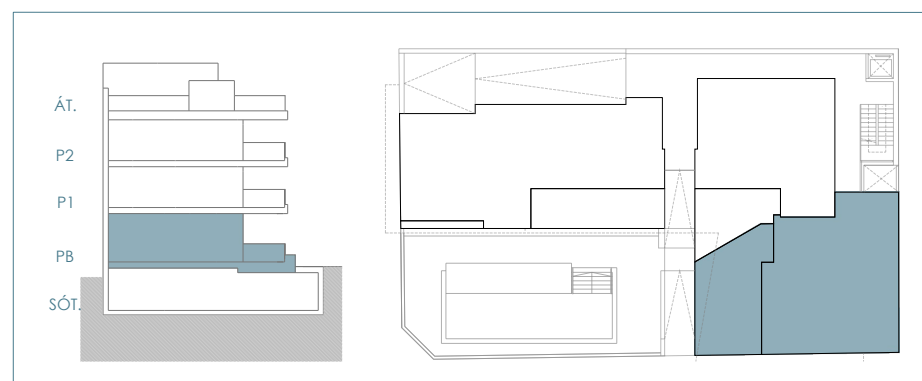
BC3 DORMITORIOS | 3 BEDROOMS
2 BAÑOS | 2 BATHROOMS**VIVIENDA BC****SUPERFICIES ÚTILES / FLOOR AREA**

1. Salón comedor cocina / Living dining kitchen	28.63	m ²
2. Distribuidor / Hall	3.83	m ²
3. Dormitorio 1 / Bedroom 1	11.93	m ²
4. Dormitorio 2 / Bedroom 2	10.66	m ²
5. Dormitorio 3 / Bedroom 3	8.66	m ²
6. Baño 1 / Bathroom 1	4.07	m ²
7. Baño 2 / Bathroom 2	3.77	m ²
8. Terraza / Terrace	34.69	m ²

TOTAL SUP. ÚTIL / TOTAL FLOOR AREA	71.55	m²
-------------------------------------------	--------------	----------------------

SUPERFICIES CONSTRUIDAS / BUILT AREA

Sup. construida cerrada / Closed built area	86.43	m ²
Terraza cubierta / Covered terrace	34.69	m ²
TOTAL SUP. CONSTRUIDA / TOTAL BUILT AREA	121.12	m²

Planta Baja
Ground Floor