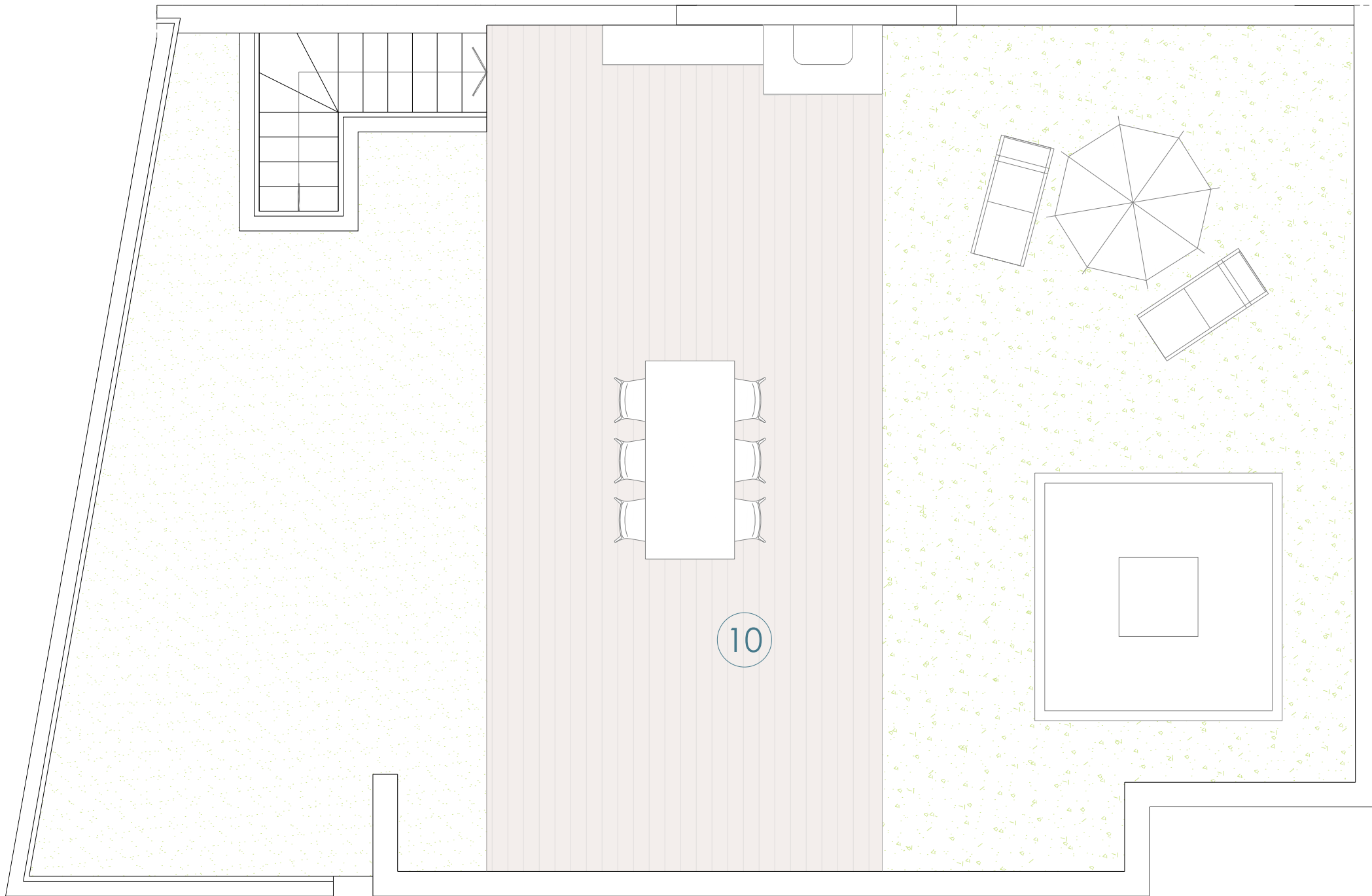


2D

3 DORMITORIOS | 3 BEDROOMS
2 BAÑOS | 2 BATHROOMS



VIVIENDA 2D

SUPERFICIES ÚTILES / FLOOR AREA

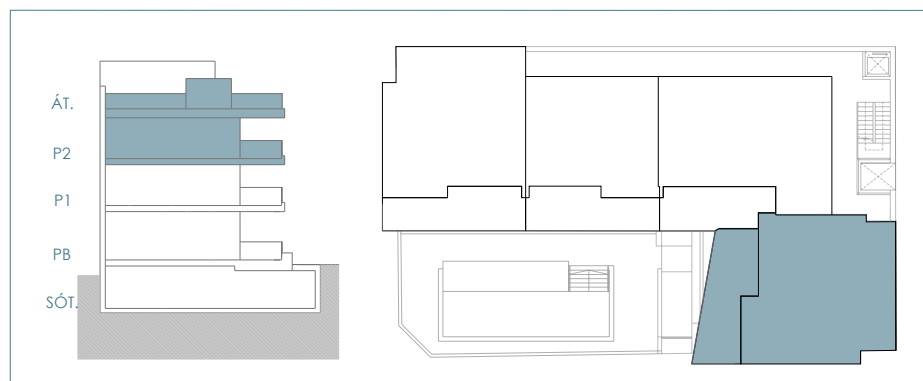
1. Vestíbulo / Hall	7.83	m ²
2. Salón comedor cocina / Living dining kitchen	27.50	m ²
3. Distribuidor / Hall	4.43	m ²
4. Dormitorio 1 / Bedroom 1	12.13	m ²
5. Dormitorio 2 / Bedroom 2	10.53	m ²
6. Dormitorio 3 / Bedroom 3	7.07	m ²
7. Baño 1 / Bathroom 1	4.32	m ²
8. Baño 2 / Bathroom 2	3.56	m ²
9. Terraza / Terrace	30.64	m ²
10. Solarium	114.42	m ²

TOTAL SUP. ÚTIL / TOTAL FLOOR AREA 77.37 m²

SUPERFICIES CONSTRUIDAS / BUILT AREA

Sup. construida cerrada / Closed built area	91.91	m ²
Terraza cubierta / Covered terrace	30.64	m ²

TOTAL SUP. CONSTRUIDA / TOTAL BUILT AREA 122.54 m²



Planta Segunda + Solarium
Second Floor + Solarium