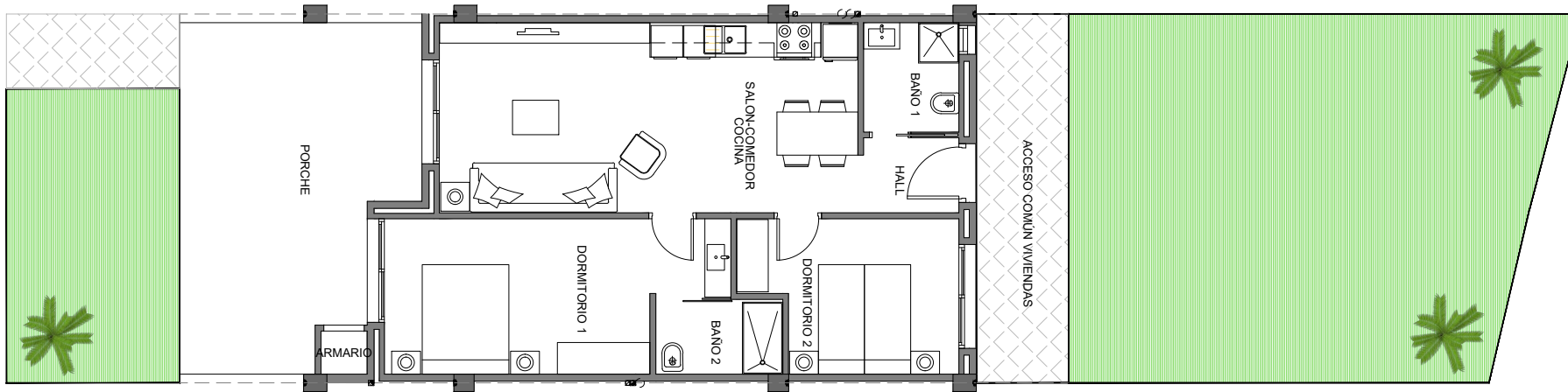


# BLOQ. 5

## Nº: 100

### Planta Baja



SUPERFICIES(M2)

VIVIENDA.....64,40\*

PORCHE.....22,00

TOTAL \_ 86,40

JARDIN \_ 58,00

\*SUP. CONSTRUIDAS

2 DORMITORIOS  
2 BAÑOS

