

SKY TOP VILLA 2.7

USEABLE SURFACE AREA

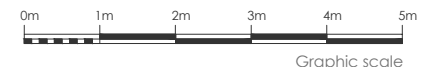
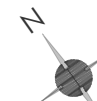
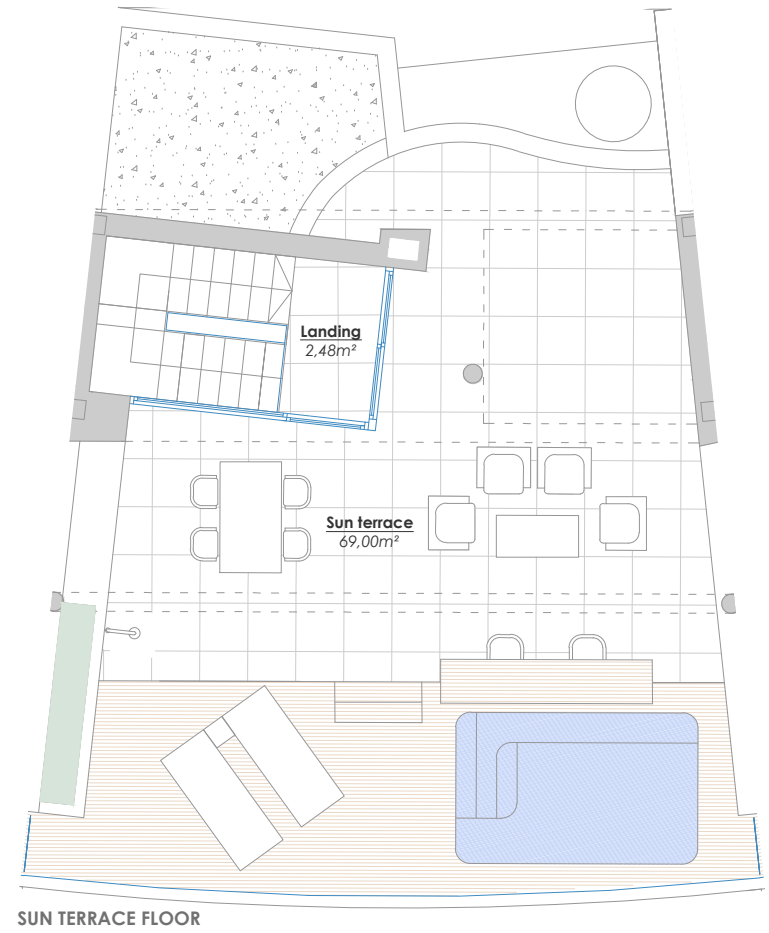
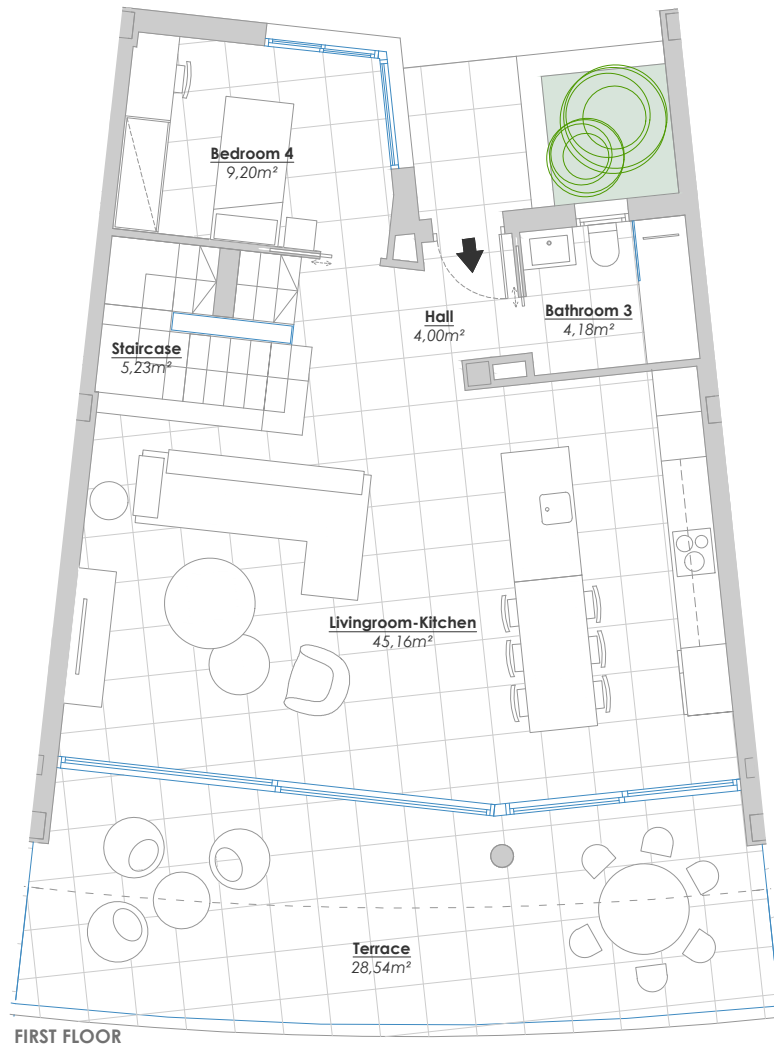
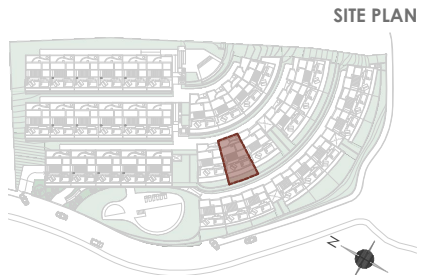
Indoors 153,87 m²

Terraces 97,54 m²

Garden 40,05 m²

TOTAL NET FLOOR AREA: 169,26 m²
ACCORDING TO ROYAL DECREE 218/2005

TOTAL BUILT ENCLOSED AREA: 183,65 m²



SKY TOP VILLA 2.7

USEABLE SURFACE AREA

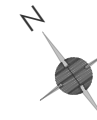
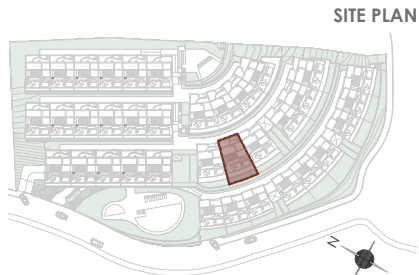
Indoors 153,87 m²

Terraces 97,54 m²

Garden 40,05 m²

TOTAL NET FLOOR AREA: 169,26 m²
ACCORDING TO ROYAL DECREE 218/2005

TOTAL BUILT ENCLOSED AREA: 183,65 m²



Graphic scale