

SKY TOP VILLA 4.5

USEABLE SURFACE AREA

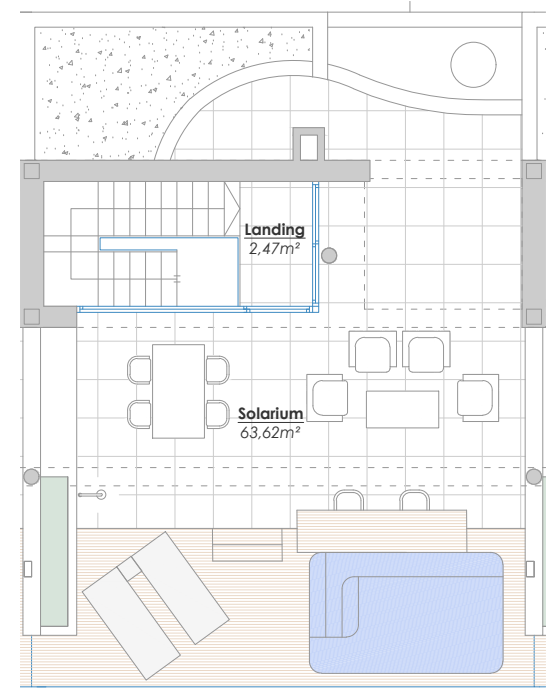
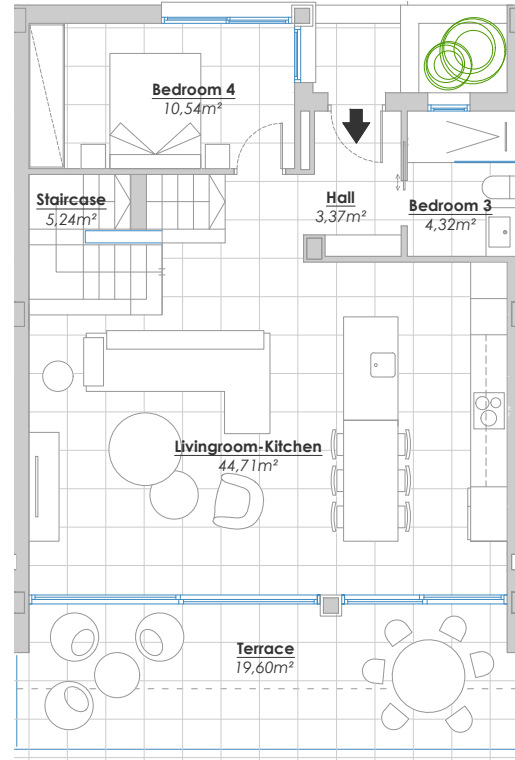
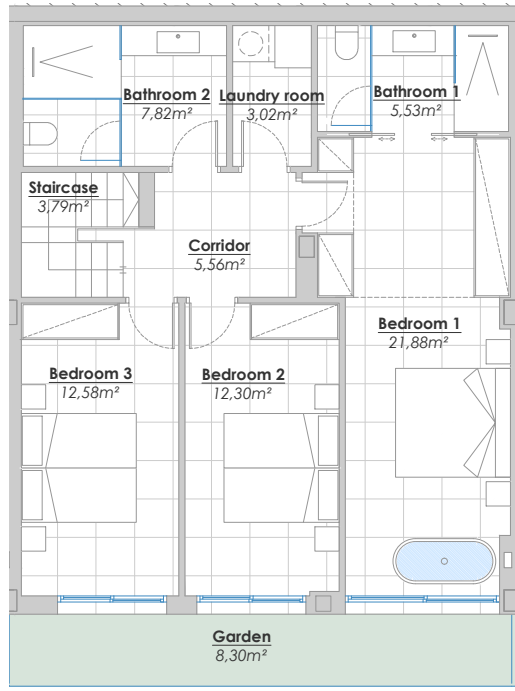
Indoors 143,13 m²

Terraces 83,22 m²

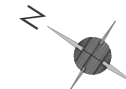
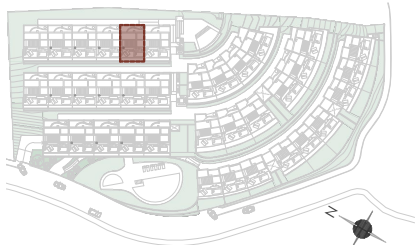
Garden 8,30 m²

TOTAL NET FLOOR AREA: 157,44 m²
ACCORDING TO ROYAL DECREE 218/2005

TOTAL BUILT ENCLOSED AREA: 172,06 m²



SITE PLAN



Graphic scale