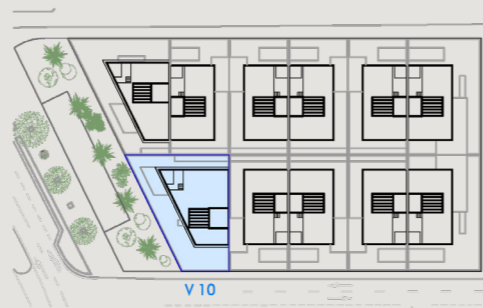


VILLA 10

6 BEDROOMS | 5+1 BATHROOMS



PLOT: 392,00 m²

Basement

Internal Built Area	213,55 m ²
Internal Useful Area	177,10 m ²
Terrace Built Area	20,72 m ²
Terrace Useful Area	16,55 m ²

Ground Floor

Internal Built Area	131,25 m ²
Internal Useful Area	104,40 m ²
Covered Terrace Built Area	83,86 m ²
Covered Terrace Useful Area	52,85 m ²

Terrace Built Area	132,07 m ²
Terrace Useful Area	121,40 m ²

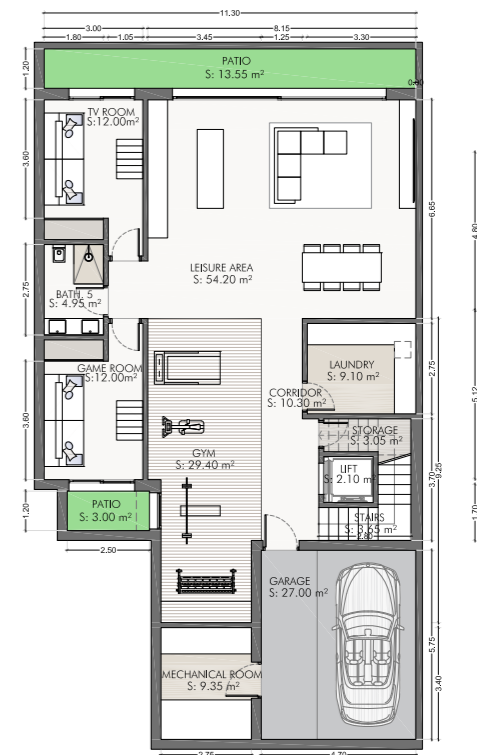
First Floor

Internal Built Area	151,45 m ²
Internal Useful Area	105,25 m ²
Covered Terrace Built Area	41,58 m ²
Covered Terrace Useful Area	41,30 m ²

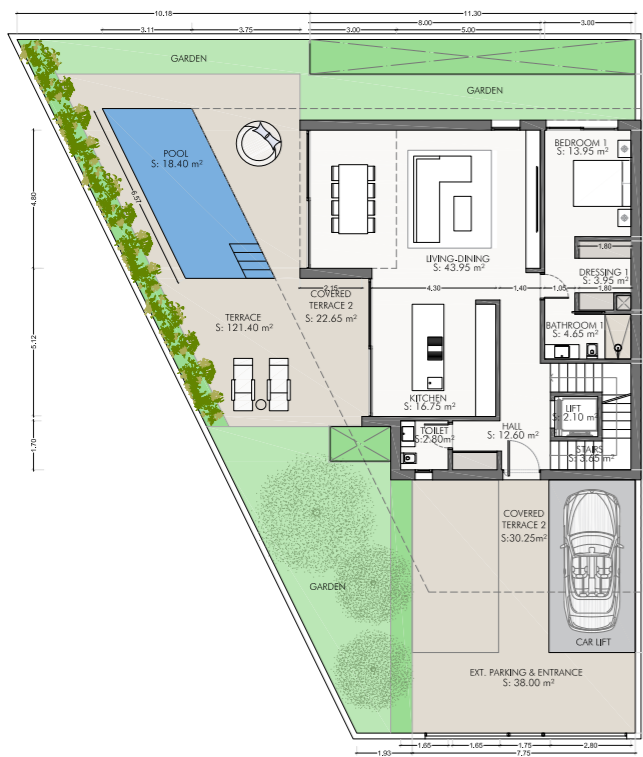
Solarium

Internal Built Area	19,15 m ²
Internal Useful Area	12,55 m ²
Terrace Built Area	157,58 m ²
Terrace Useful Area	147,45 m ²

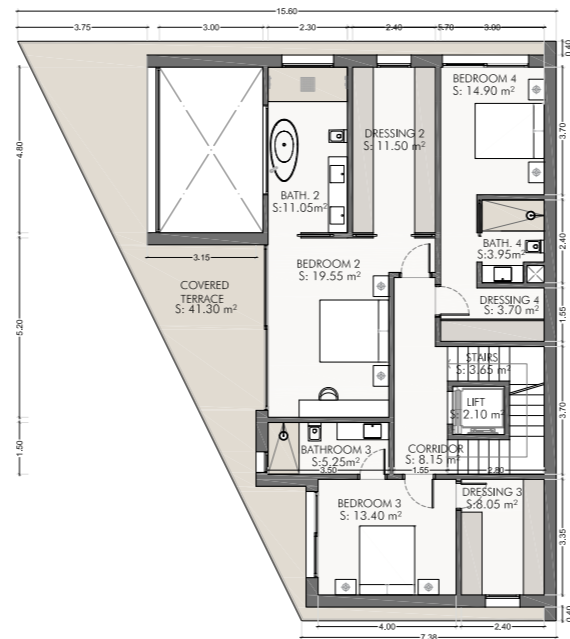
TOTAL INTERNAL BUILT AREA	515,40 m²
TOTAL TERRACE OUTDOOR AREA	435,81 m²
POOL AREA	18,40 m²
TOTAL BUILT AREA	951,21 m²
TOTAL USEFUL AREA	797,25 m²



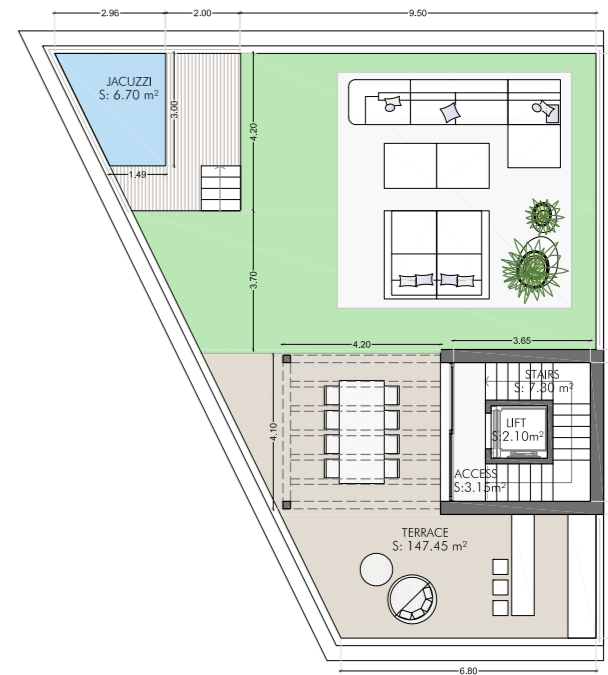
Basement



Ground Floor



First Floor



Solarium