

USABLE AREA

168,44 sq m
Indoor area

59,64 sq m
Covered terrace

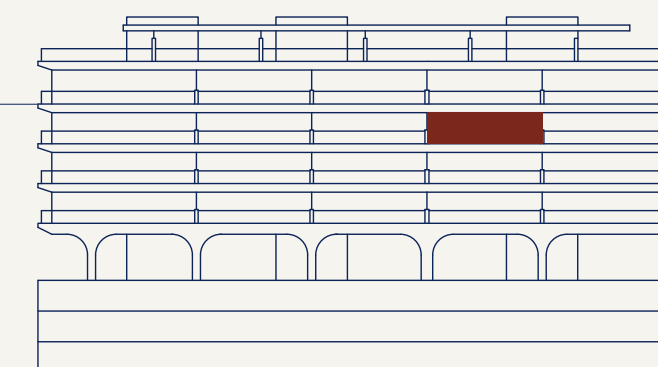
BUILT AREA

186,32 sq m
Indoor area

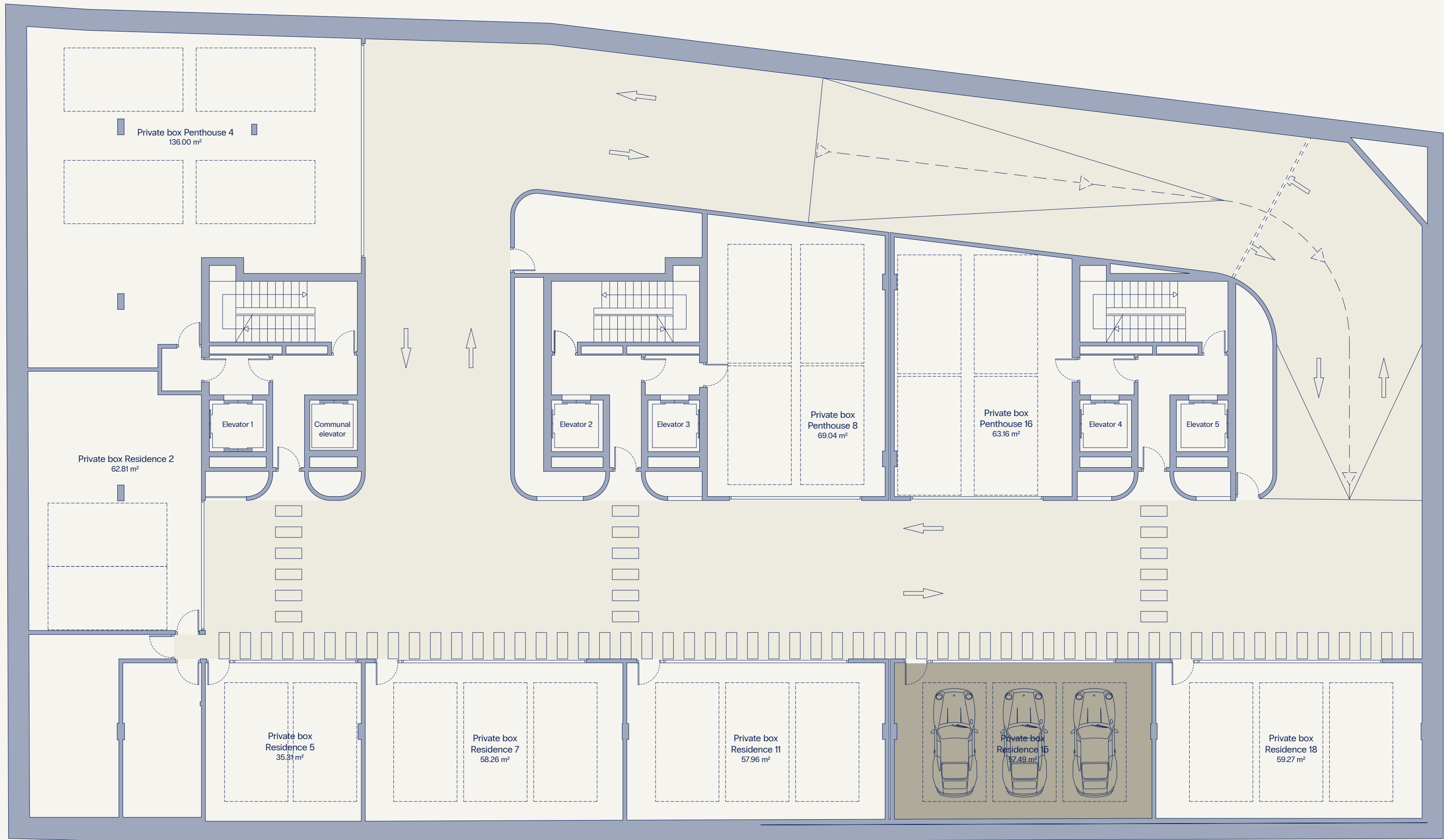
67,46 sq m
Covered terrace

Usable area: 185,28 sqm (according to Decree 218/2005)

3RD FLOOR



MOUNTAIN VIEW



SEA VIEW

FLOOR -2

