

USABLE AREA

168,44 sq m  
Indoor area

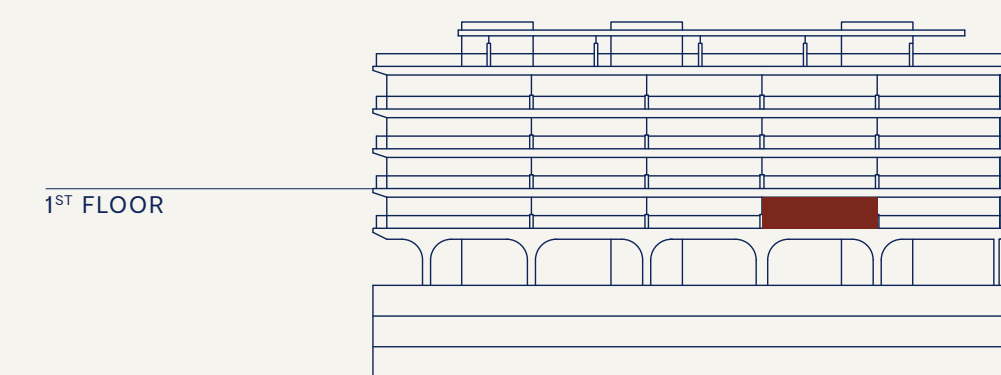
59,64 sq m  
Covered terrace

BUILT AREA

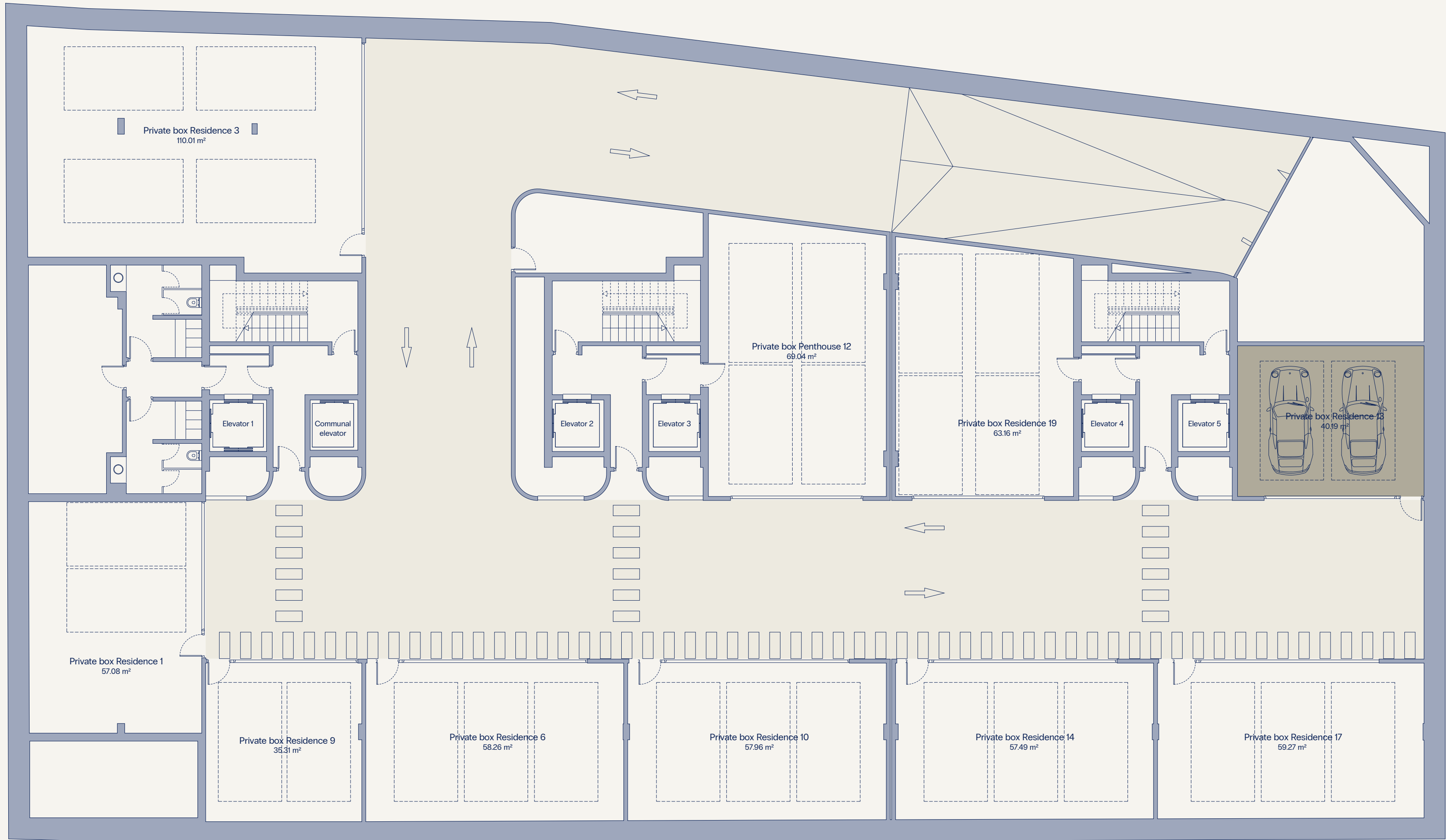
186,32 sq m  
Indoor area

67,46 sq m  
Covered terrace

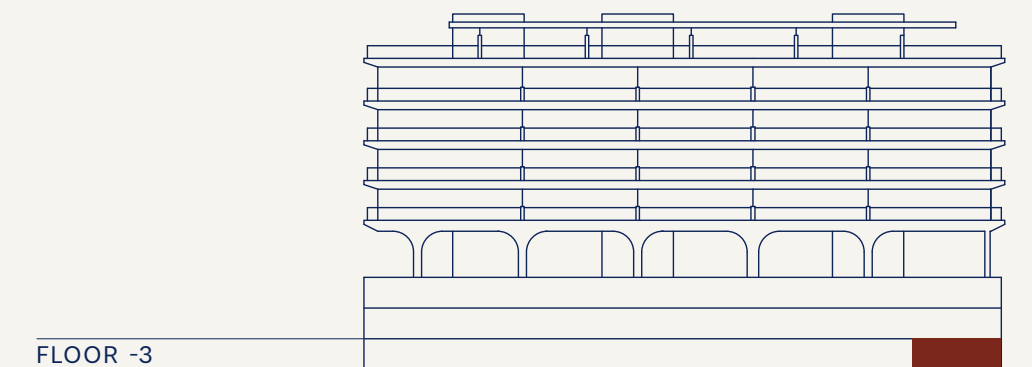
Usable area: 185,28 sqm (according to Decree 218/2005)



▲ MOUNTAIN VIEW



≡ SEA VIEW



FLOOR -3