

SEA VIEW

MOUNTAIN VIEW

USABLE AREA

182,26 sq m  
Indoor area

66,29 sq m  
Covered terrace

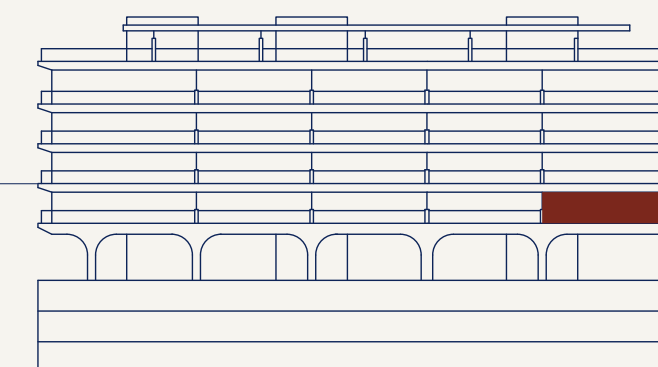
BUILT AREA

200,40 sq m  
Indoor area

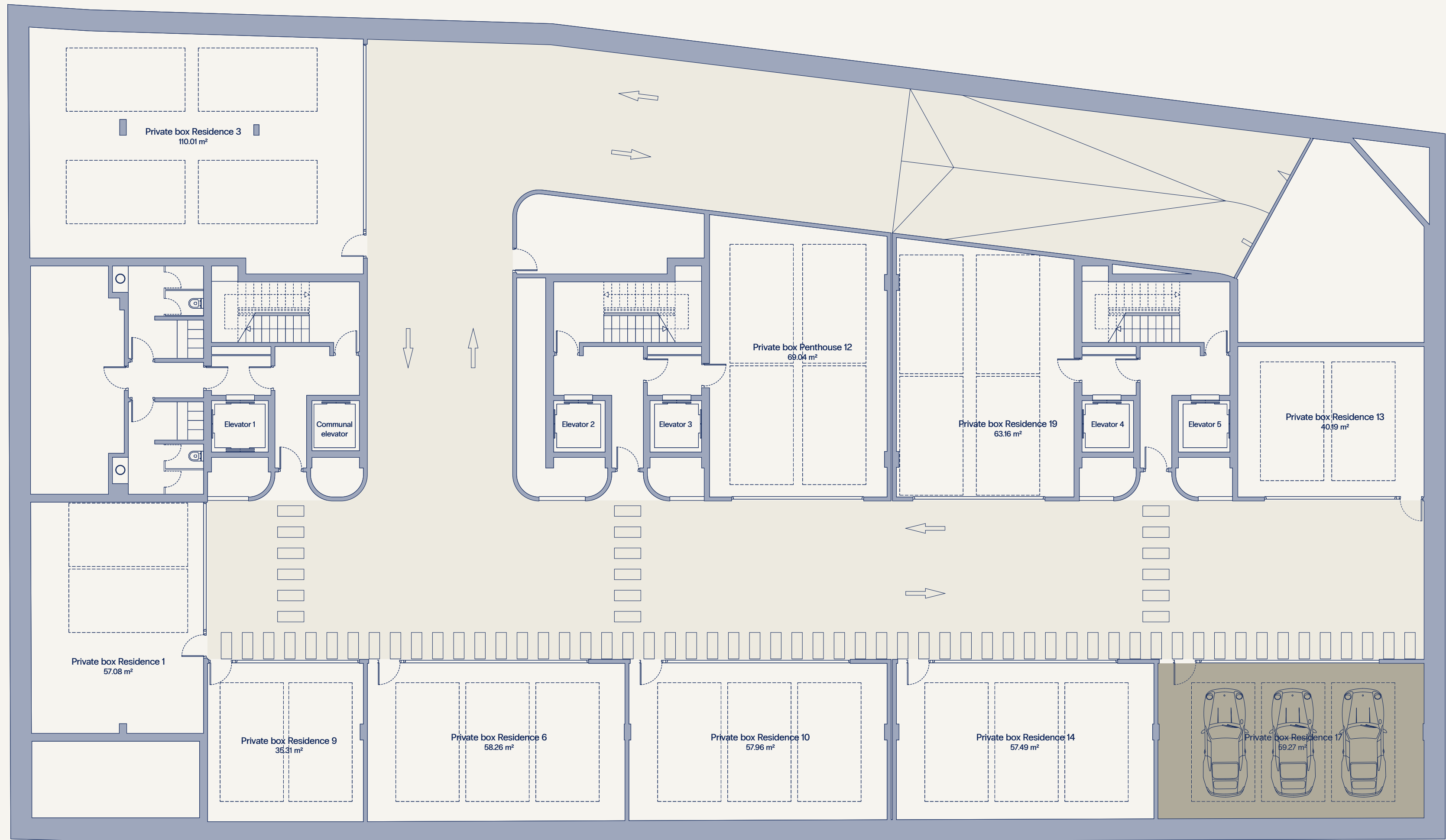
76,39 sq m  
Covered terrace

Usable area: 200,49 sqm (according to Decree 218/2005)

1<sup>ST</sup> FLOOR



MOUNTAIN VIEW



SEA VIEW

FLOOR -3

