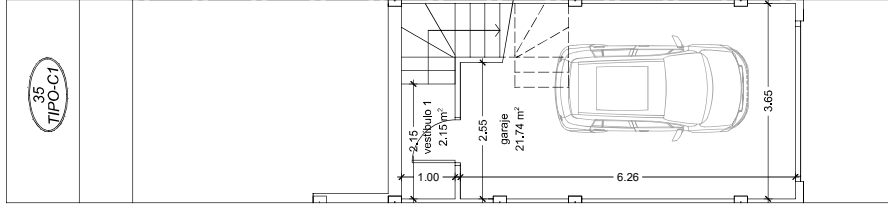
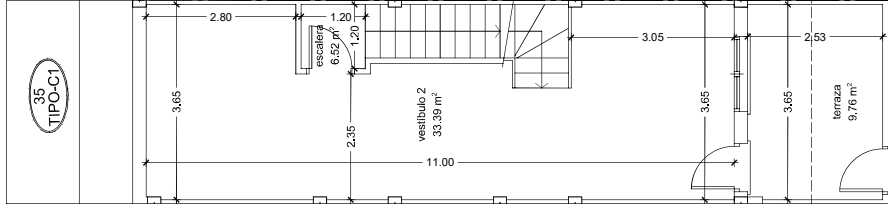


VIVIENDA 35 escala 1/100

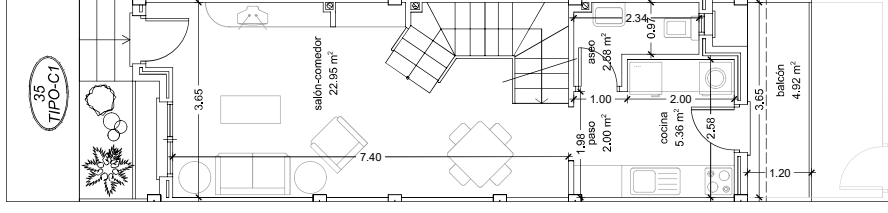
1ª FASE - 8 VIVIENDAS - PISCINA



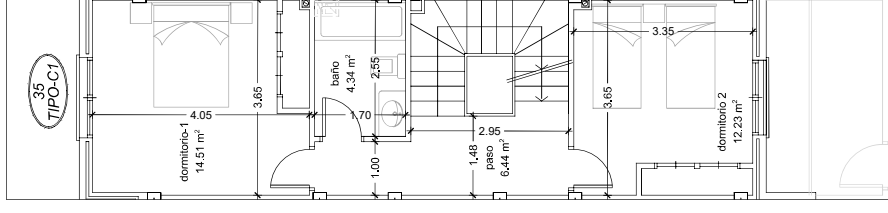
planta sótano



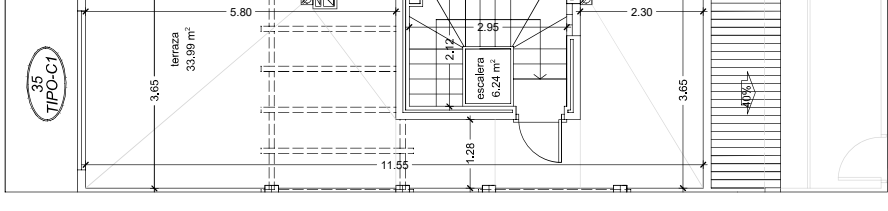
entrepantalla



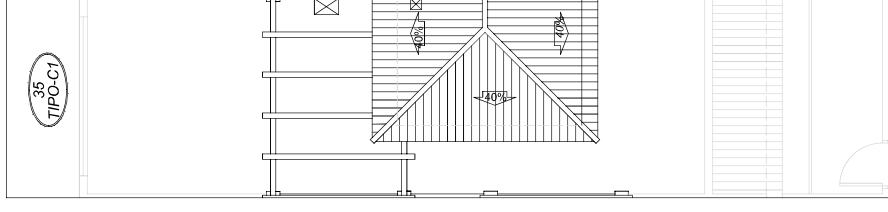
planta baja



planta 1ª

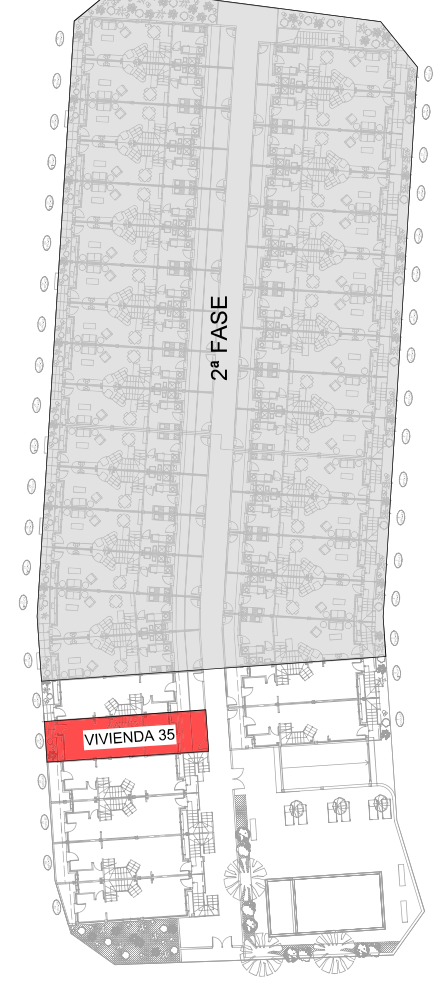


planta terraza



planta cubierta

VIVIENDA 35	SUPERFICIE UTIL		SUPERFICIE CONSTRUIDA
	CERRADA	ABIERTA	
PLANTA BAJA	32.89 m ²	4.92 m ²	43.80 m ²
PLANTA 1ª	37.52 m ²	6.24 m ²	48.83 m ²
PLANTA TERRAZA	6.24 m ²	33.99 m ²	84.2 m ²
TOTAL VIVIENDA	76.65 m²	38.91 m²	100.85 m²
ENTREPANTALLA	39.91 m ²	9.76 m ²	44.71 m ²
SOTANO	23.89 m ²		29.50 m ²
TOTAL GARAJE	63.80 m²	9.76 m²	73.21 m²
TOTAL GARAJE - P.P.Z.C.	77.40 m²		87.55 m²



39 VIVIENDAS UNIFAMILIARES