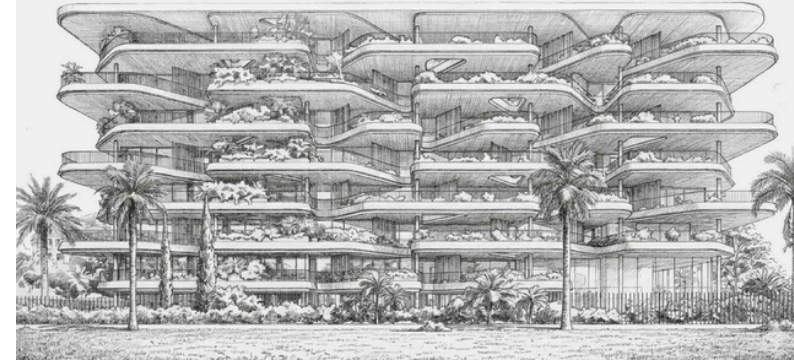
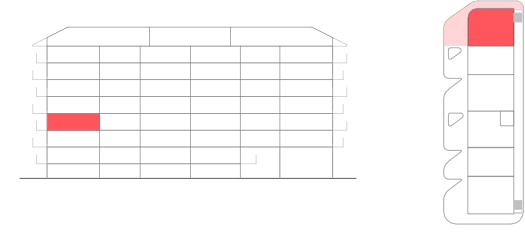


# H58 | BLOCK B | 3° A



## AMENITIES



## TOTAL LIVING AREA (m<sup>2</sup>)

MASTER BEDROOM	15.13
BEDROOM 2	10.85
BEDROOM 3	14.77
KITCHEN-DINNING ROOM	33.09
MASTER BATHROOM	8.32
BATH 2	3.78
ENTRY	7.91
CORE	3.31

	PROJECT AREA	DECREE 218/2005
INTERIOR LIVING AREA	97,16	
TERRACE LIVING AREA	69,26	
TOTAL LIVING AREA	166,42	106,88
INT CONST AREA + PP. CA	155,97	
TERRACE CONSTRUCTED AREA	74,72	
TOTAL CONSTRUCTED AREA	230,69	165,68

(Include proper constructed area, CA proportional part and terrace)

