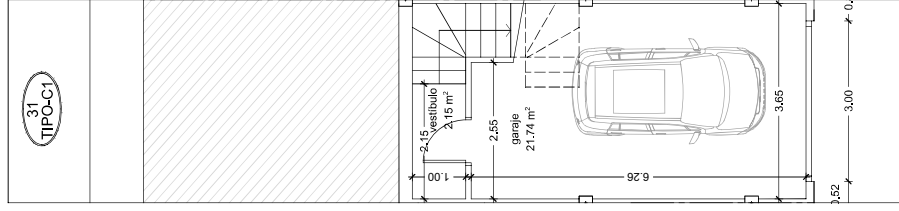


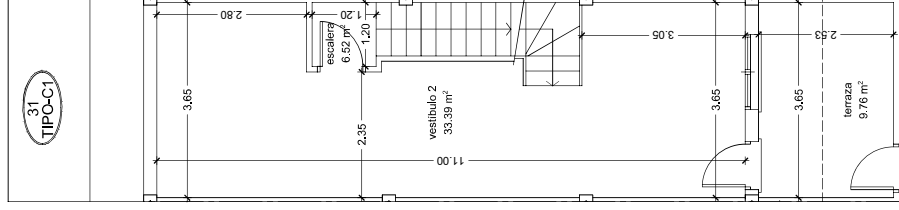


VIVIENDA 31 escala 1/100

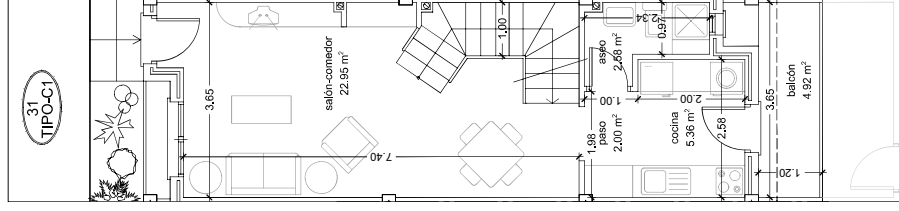
2ª FASE - 10 VIVIENDAS



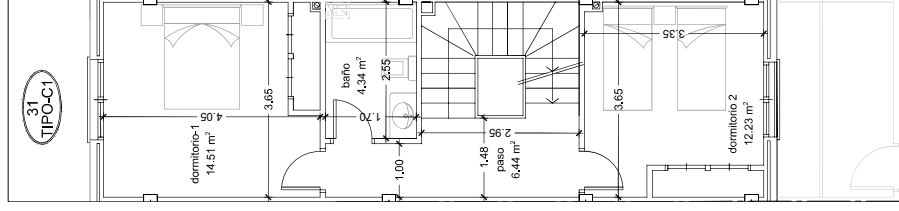
planta sótano



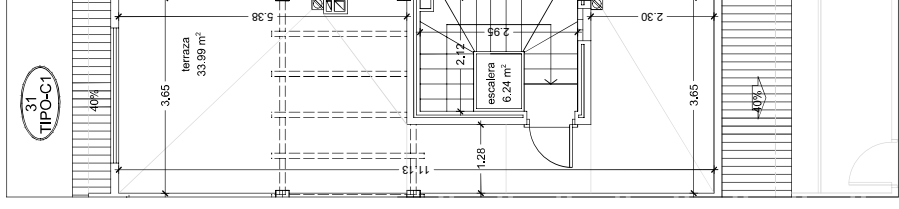
entrepantalla



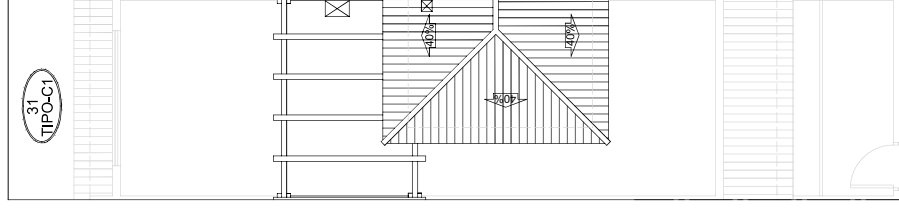
planta baja



planta 1ª

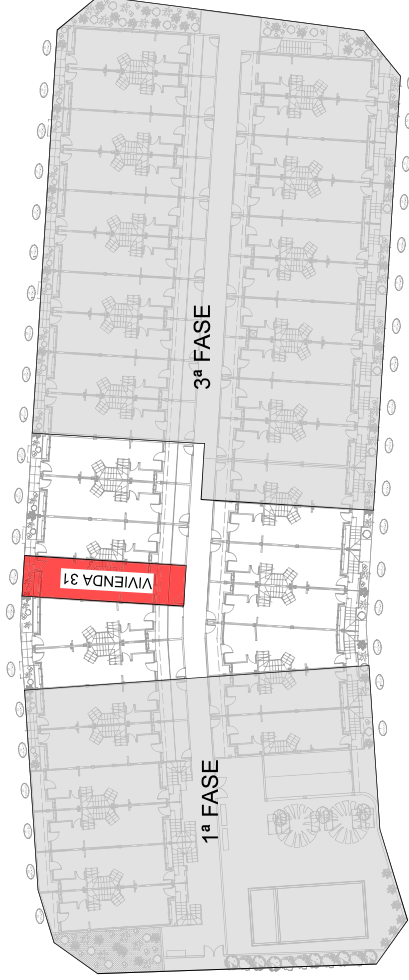


planta terraza



planta cubierta

VIVIENDA 31	SUPERFICIE UTIL		SUPERFICIE CONSTRUIDA
	CERRADA	ABIERTA	
PLANTA BAJA	32.89 m ²	4.92 m ²	43.80 m ²
PLANTA 1ª	37.52 m ²		48.83 m ²
PLANTA TERRAZA	5.24 m ²	33.99 m ²	8.42 m ²
TOTAL VIVIENDA	75.65 m ²	38.91 m ²	100.85 m ²
GARAJE SÓTANO	23.99 m ²		23.99 m ²
TOTAL GARAJE	23.99 m ²		23.99 m ²
TOTAL GARAJE + P.P.Z.C.	34.16 m ²		40.80 m ²



39 VIVIENDAS UNIFAMILIARES TIPO DÚPLEX CON GARAJES EN SÓTANO

Portmán - La Unión