

GARDEN VILLA

N°051

2.8.PB.B

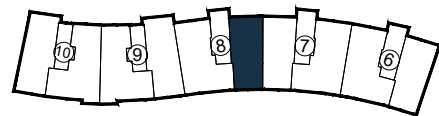
2 BEDROOM UNIT

BUILT AREA

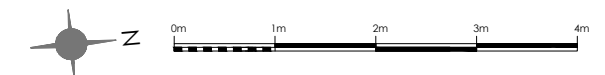
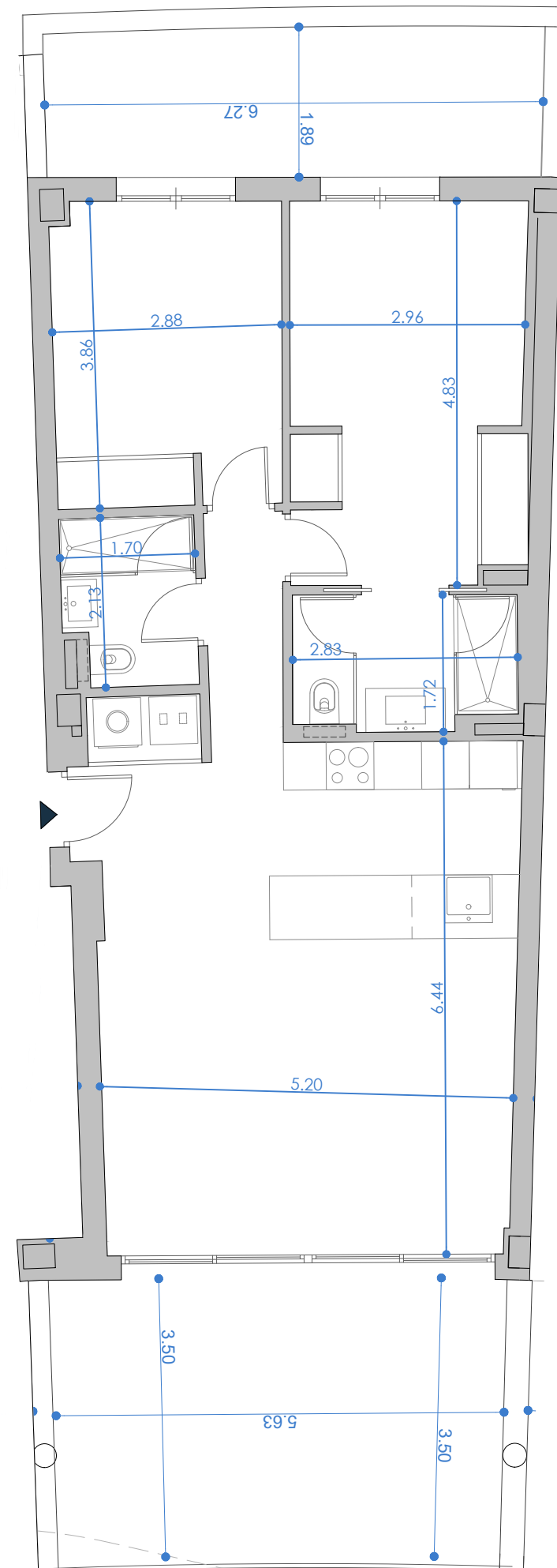
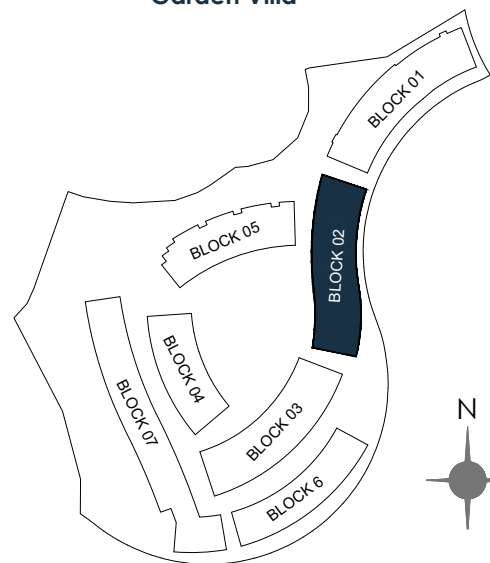
Living Area	82.17 m ²
Terrace Area	21.28 m ²
Garden + Uncovered terrace	14.51 m ²
TOTAL BUILT AREA:	117.96 m²

ACCORDING TO RD 218/2005

Useful Area	77.57 m ²
Built Area	108.75 m ²



Garden Villa



Escala Gráfica

(*) This plan may be modified depending on progress of the development. The furniture shown is purely for decorative purposes. The project manager reserves the right to make the necessary changes for any possible functional, aesthetic and legal reasons, without this negatively affecting the quality of the construction. Illustrative dimensions.