

APARTMENT

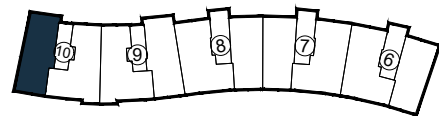
N°069

2.10.P2.B

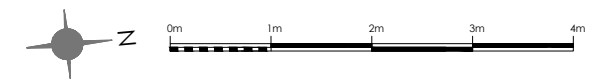
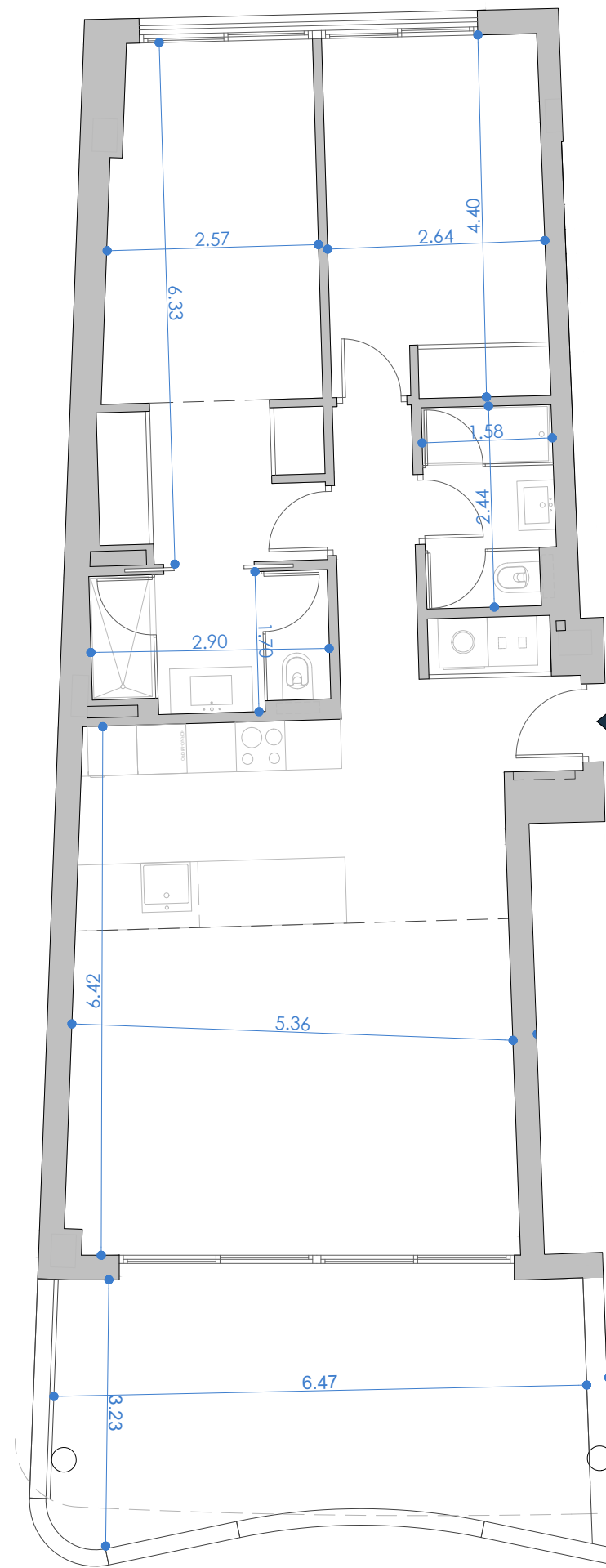
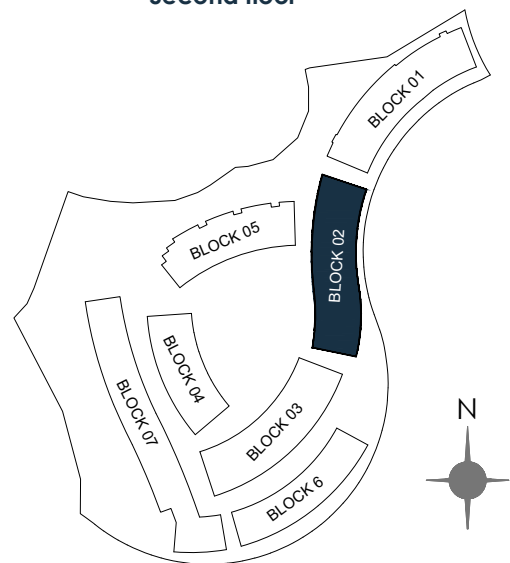
3 BEDROOM UNIT

BUILT AREA	
Living Area	92.03 m ²
Terrace Area	19.34 m ²
Garden + Uncovered terrace	2.53 m ²
TOTAL BUILT AREA:	113.90 m²

ACCORDING TO RD 218/2005	
Useful Area	78.58 m ²
Built Area	116.65 m ²



Second floor



Escala Gráfica

(*) This plan may be modified depending on progress of the development. The furniture shown is purely for decorative purposes. The project manager reserves the right to make the necessary changes for any possible functional, aesthetic and legal reasons, without this negatively affecting the quality of the construction. Illustrative dimensions.