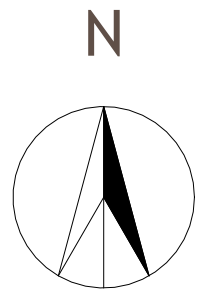
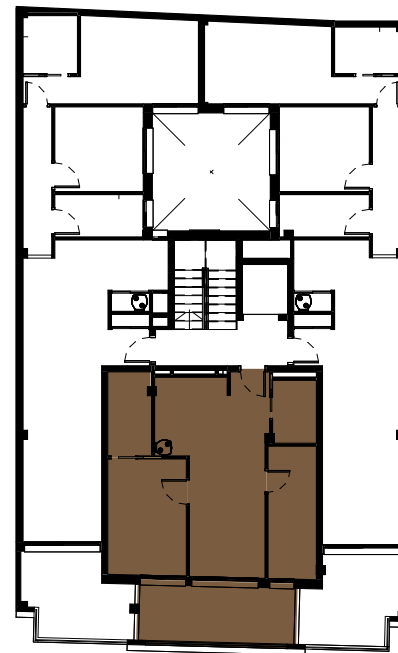
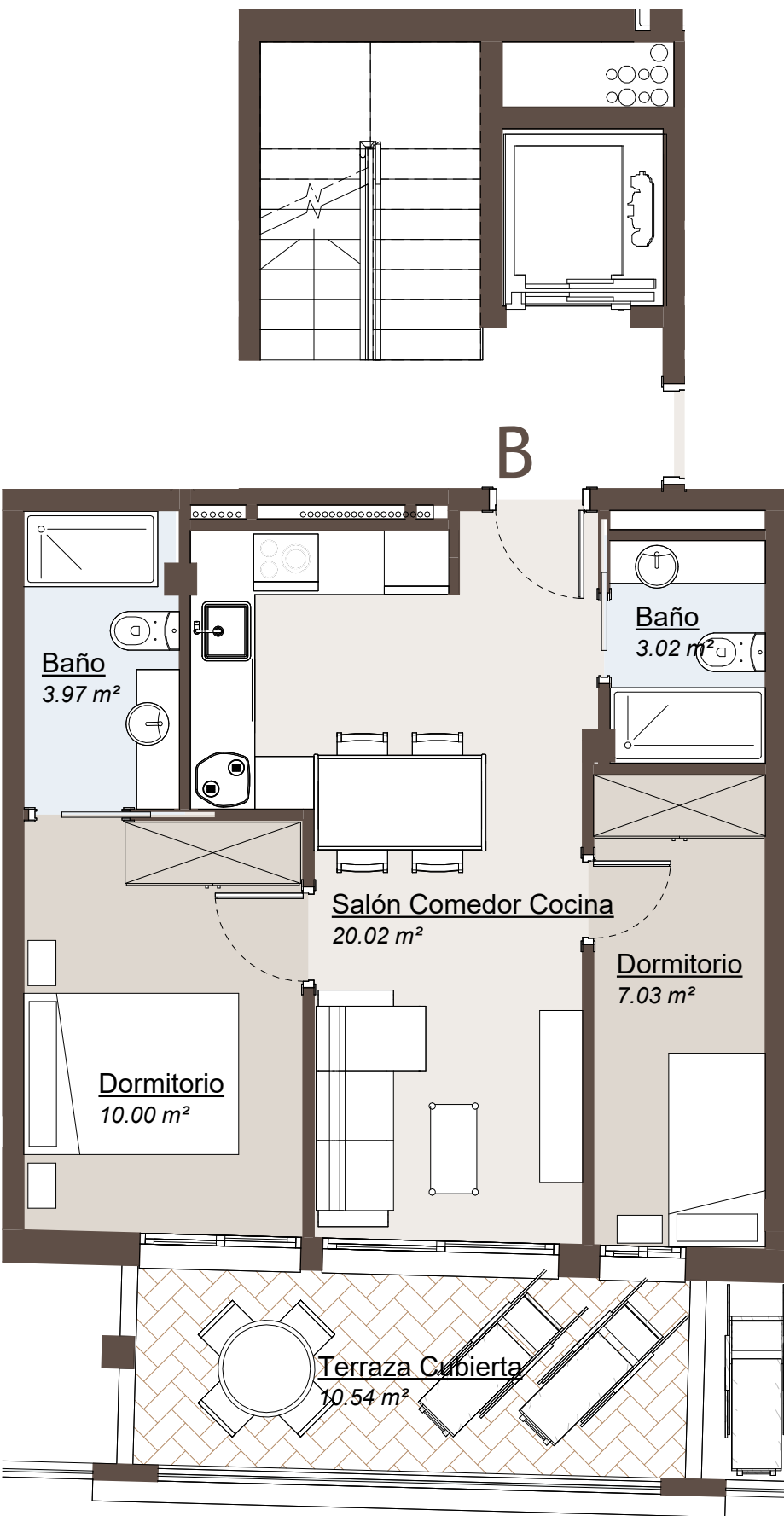


Planta Primera Tipo B



SUPERFICIES ÚTILES - TIPO B	
SALÓN COMEDOR COCINA	20,02 m ²
DORMITORIO	10,00 m ²
DORMITORIO	7,03 m ²
BAÑO	3,97 m ²
BAÑO	3,02 m ²
SUP. ÚTIL INTERIOR	44,04 m ²
TERRAZA	10,54 m ²
TOTAL	54,58 m²

SUP. CONSTRUIDA +PP. Z.C.+TERRAZAS	68,64 m ²
------------------------------------	----------------------



ESCALA GRÁFICA