

# 52 TOWNHOUSES, GARAGES AND COMMUNAL AREAS

## TOWNHOUSE KA-02

3 BEDROOMS  
Block 1

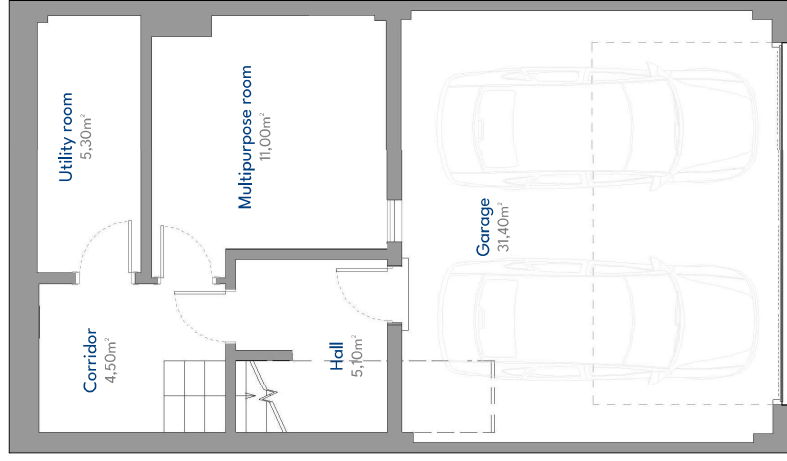
### BUILT AREA

Living Area	210,75 m <sup>2</sup>
Terrace Area	18,18 m <sup>2</sup>
Garden + Uncovered terrace	117,09 m <sup>2</sup>
<b>TOTAL BUILT AREA</b>	<b>346,02 m<sup>2</sup></b>

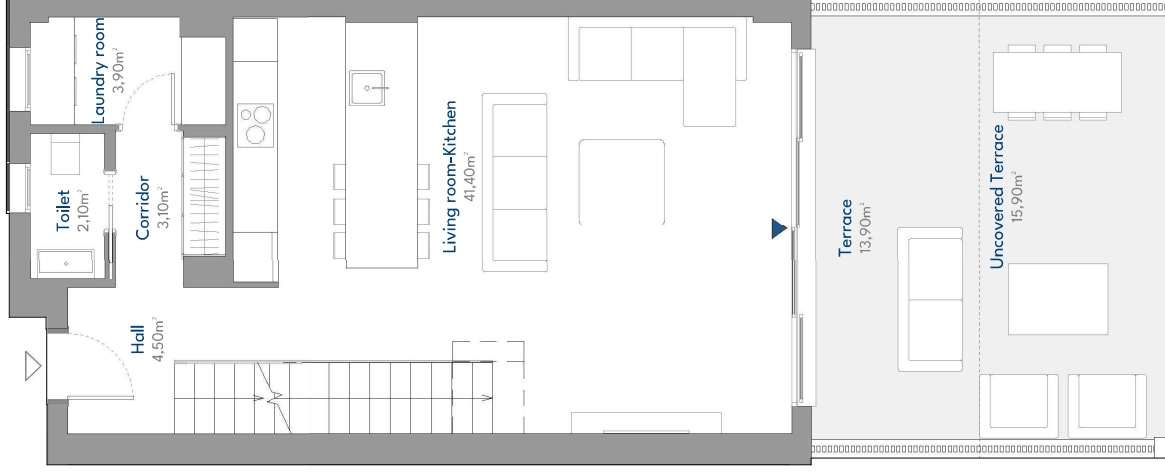
### ACCORDING TO RD 218 /2005

Useful Area	133,68 m <sup>2</sup>
Built Area	178,09 m <sup>2</sup>

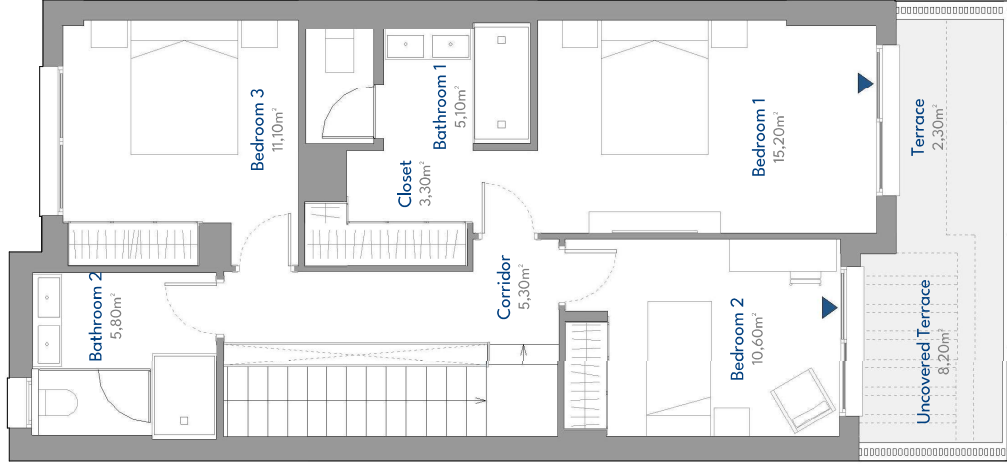
### LOCATION PLAN



Basement Floor



Ground Floor



First Floor



# 52 TOWNHOUSES, GARAGES AND COMMUNAL AREAS

## TOWNHOUSE KA-02

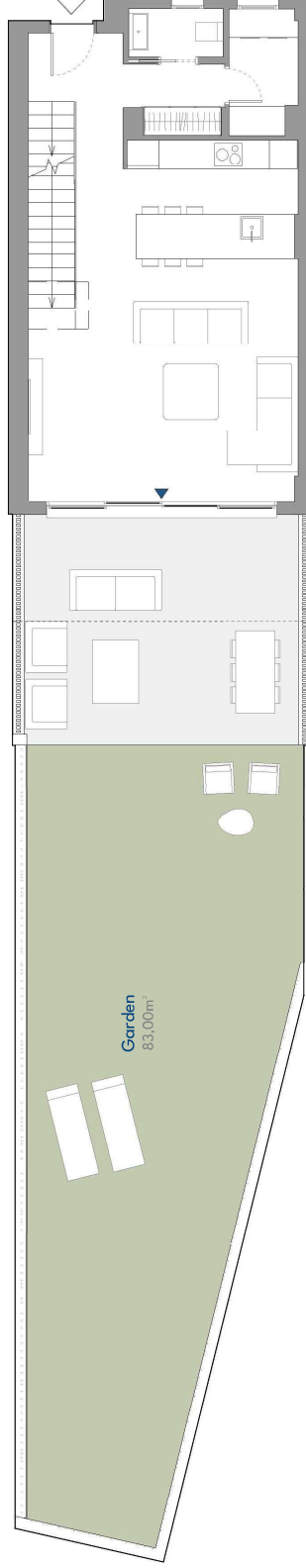
3 BEDROOMS  
Block 1

### BUILT AREA

Living Area	210,75 m <sup>2</sup>
Terrace Area	18,18 m <sup>2</sup>
Garden + Uncovered terrace	117,09 m <sup>2</sup>
<b>TOTAL BUILT AREA</b>	<b>346,02 m<sup>2</sup></b>

### ACCORDING TO RD 218/2005

Useful Area	133,68 m <sup>2</sup>
Built Area	178,09 m <sup>2</sup>



### LOCATION PLAN

