

# 52 TOWNHOUSES, GARAGES AND COMMUNAL AREAS

## TOWNHOUSE KA-08

3 BEDROOMS  
Block 1

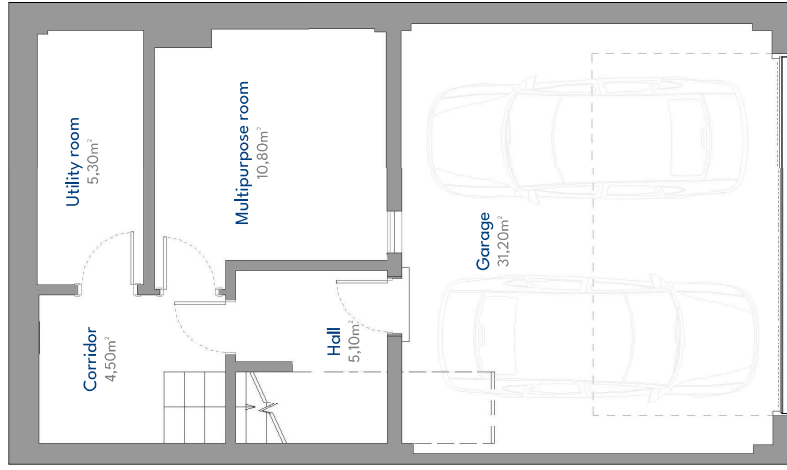
### BUILT AREA

Living Area	220,61 m <sup>2</sup>
Terrace Area	19,92 m <sup>2</sup>
Garden + Uncovered terrace	244,75 m <sup>2</sup>
<b>TOTAL BUILT AREA</b>	<b>485,28 m<sup>2</sup></b>

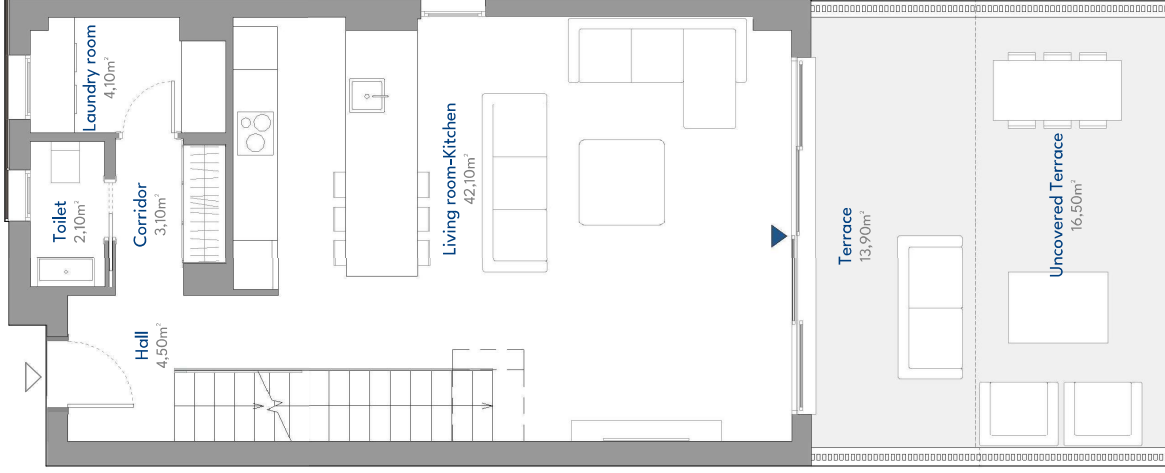
### ACCORDING TO RD 218/2005

Useful Area	137,58 m <sup>2</sup>
Built Area	229,94 m <sup>2</sup>

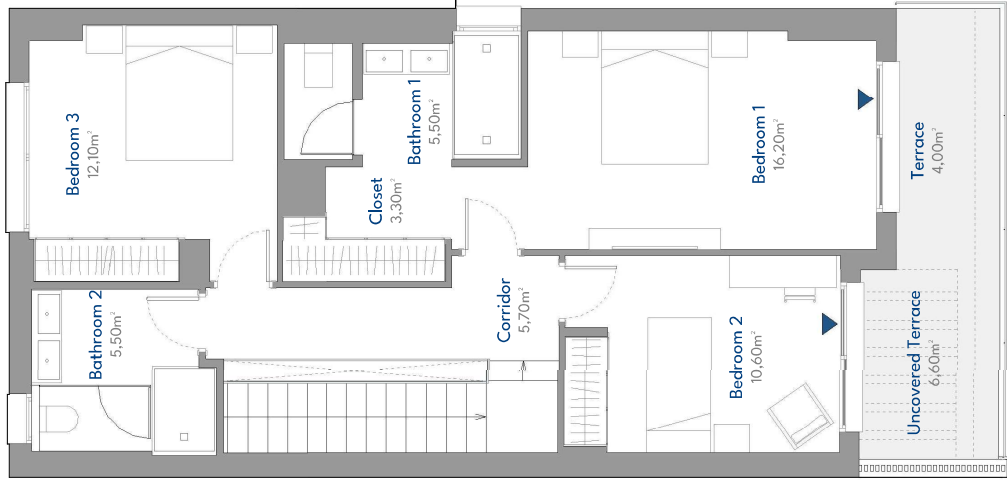
### LOCATION PLAN



Basement Floor



Ground Floor



First Floor



# 52 TOWNHOUSES, GARAGES AND COMMUNAL AREAS

## TOWNHOUSE KA-08

3 BEDROOMS  
Block 1

### BUILT AREA

Living Area	220,61 m <sup>2</sup>
Terrace Area	19,92 m <sup>2</sup>
Garden + Uncovered terrace	244,75 m <sup>2</sup>
<b>TOTAL BUILT AREA</b>	<b>485,28 m<sup>2</sup></b>

### ACCORDING TO RD 218/2005

Useful Area	137,58 m <sup>2</sup>
Built Area	229,94 m <sup>2</sup>

### LOCATION PLAN

